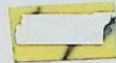
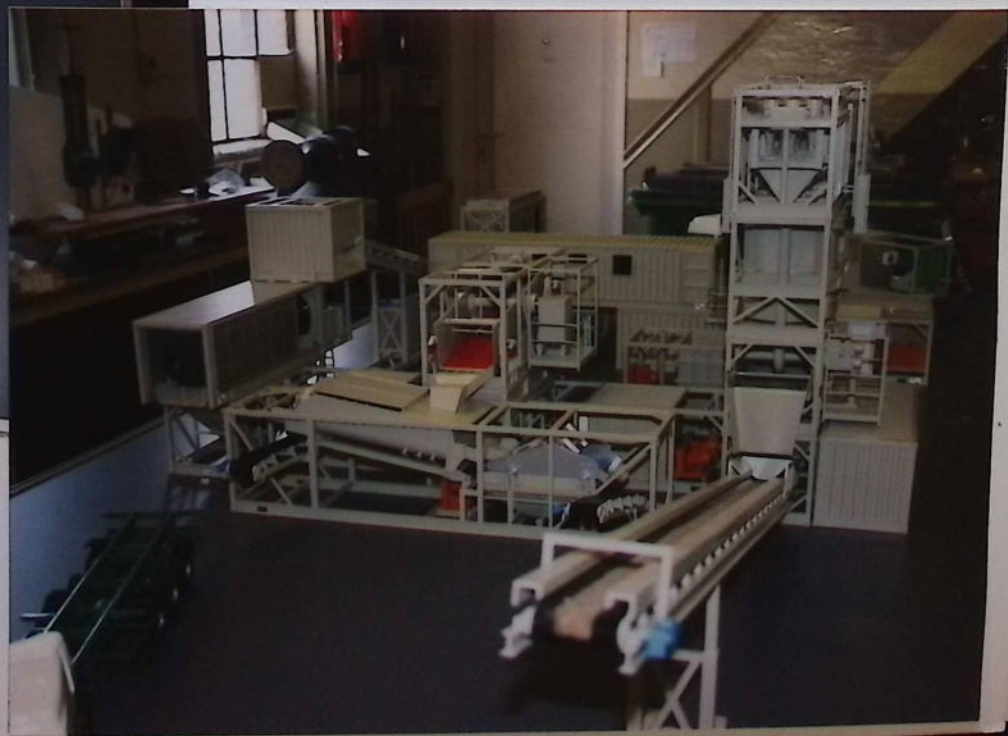
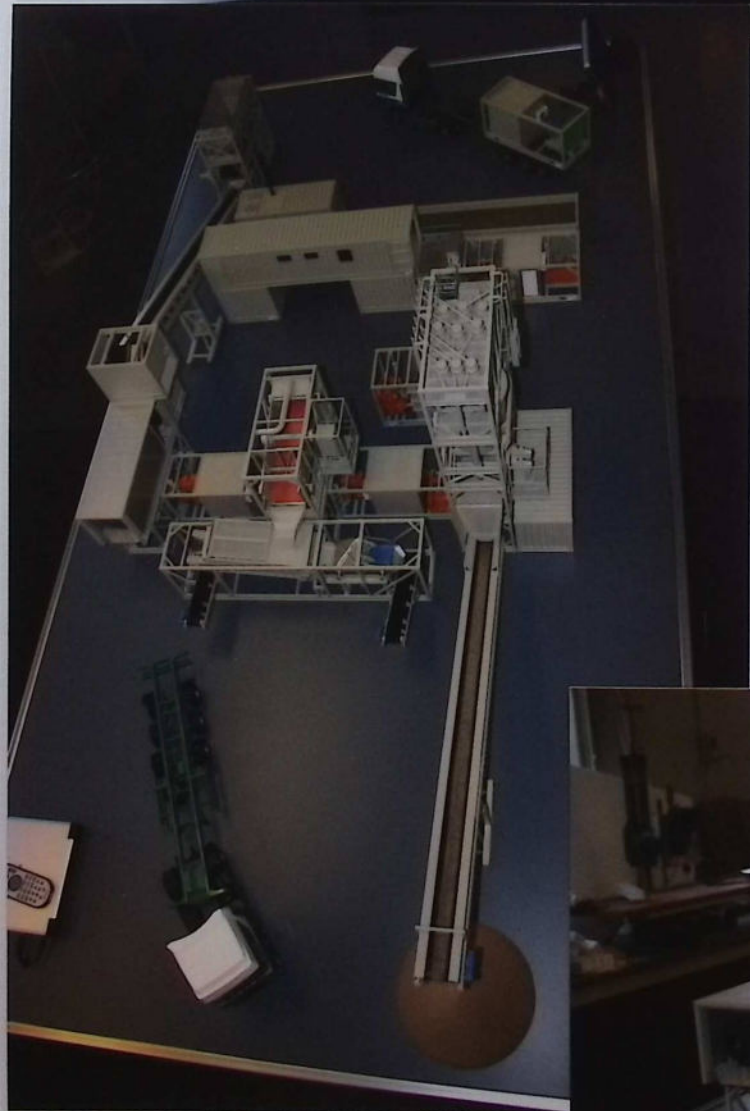
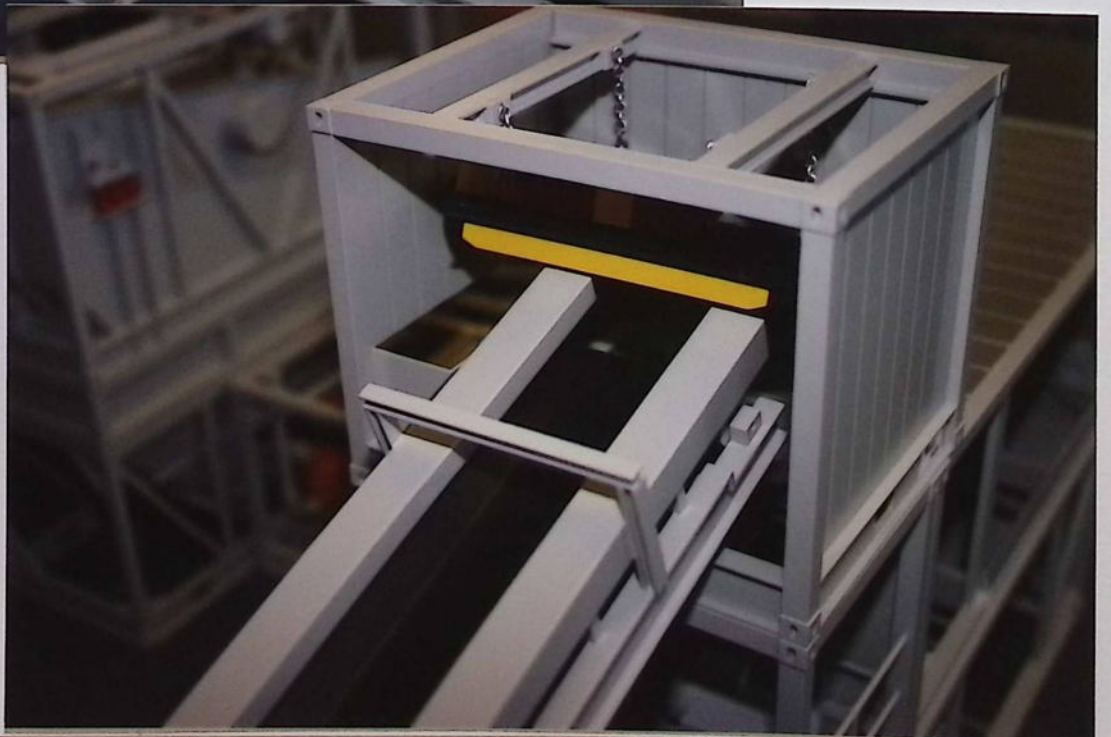
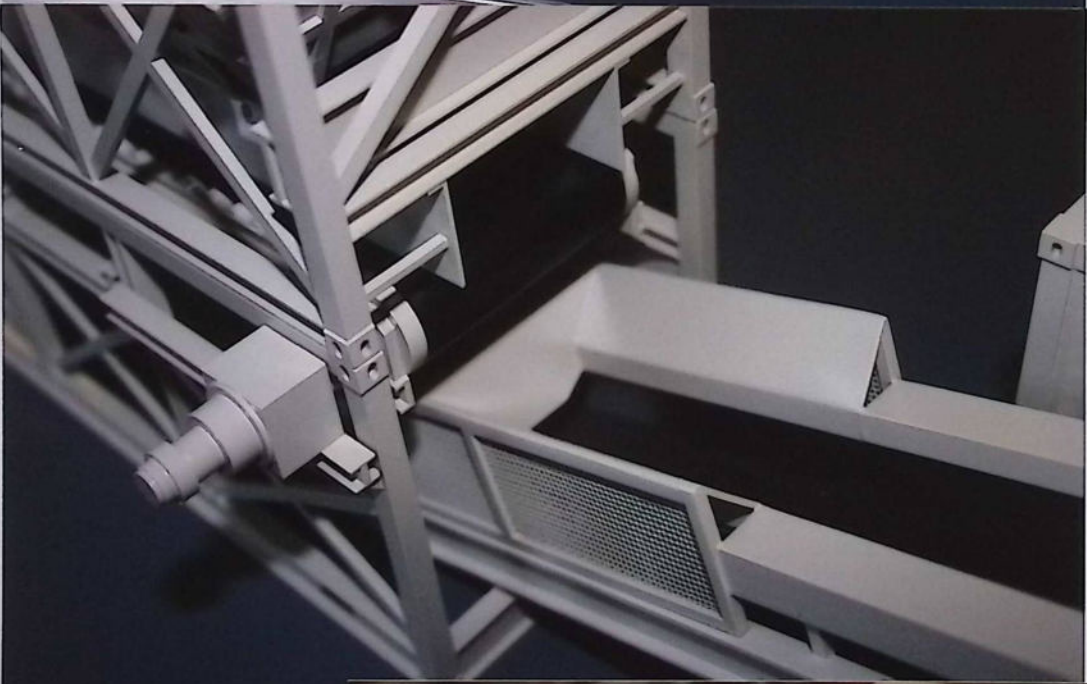
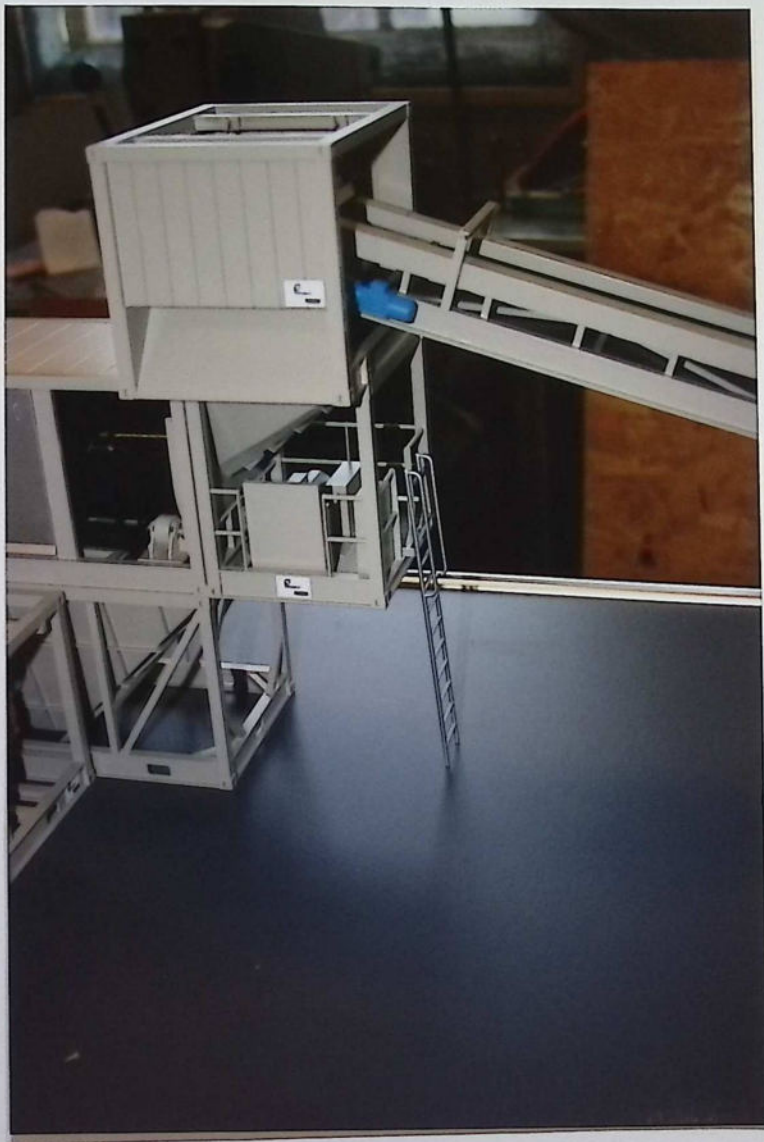


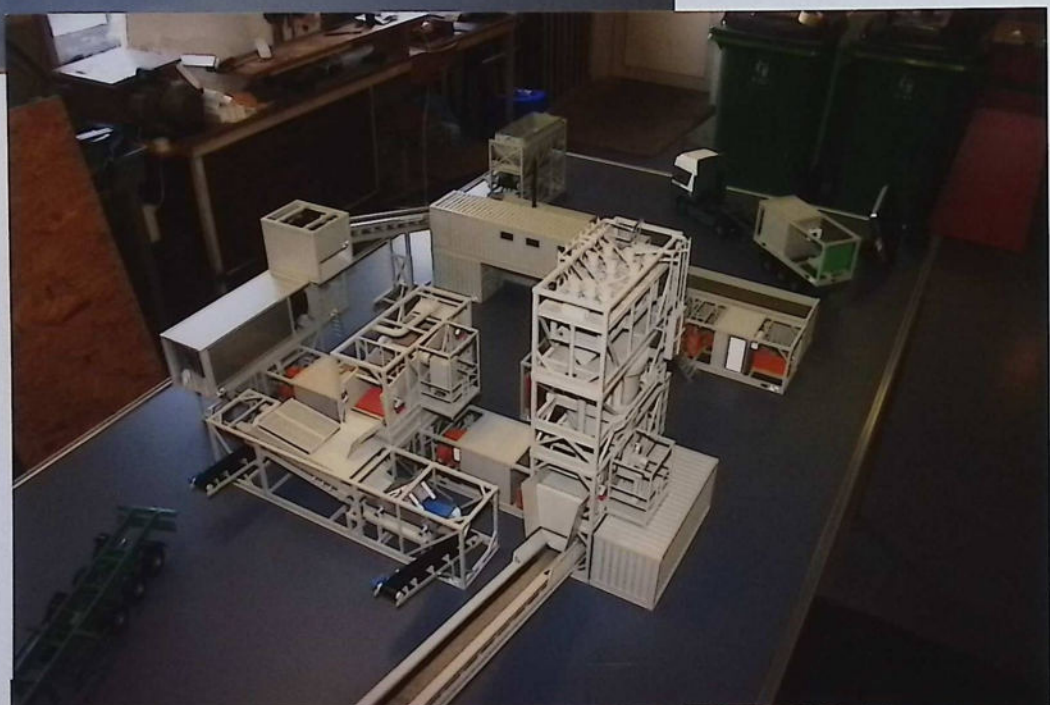
BOSKALIS
DOLMAN
M.S.W plant.
afm. 240x120 cm.
re aft. 27/9/07

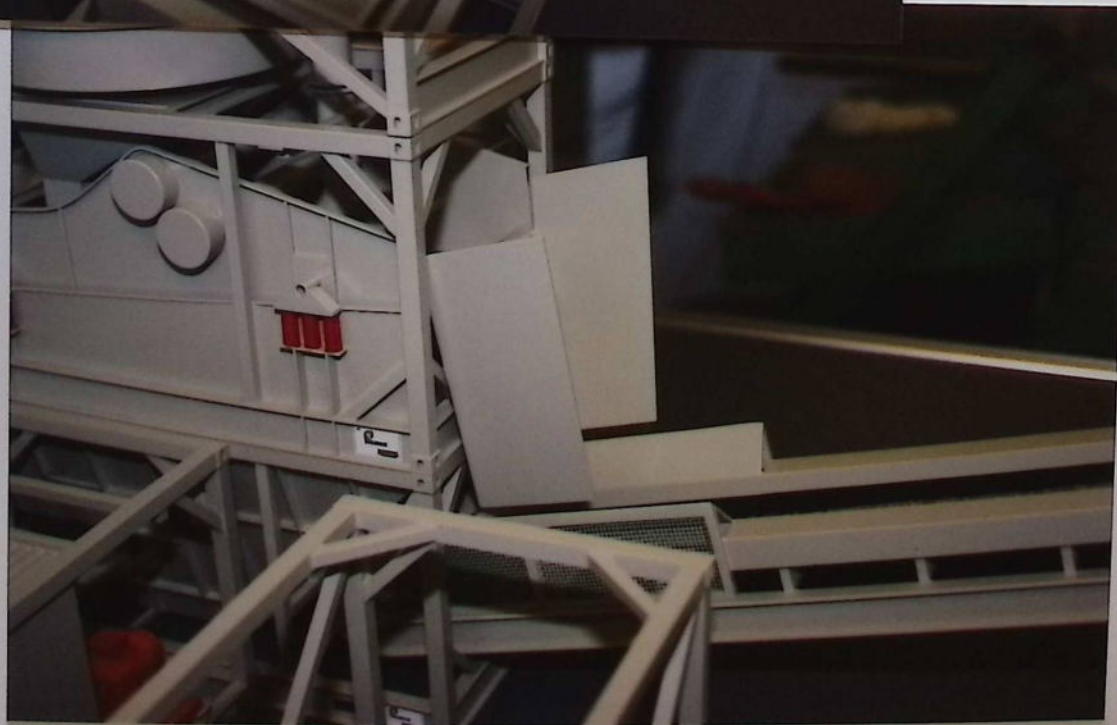
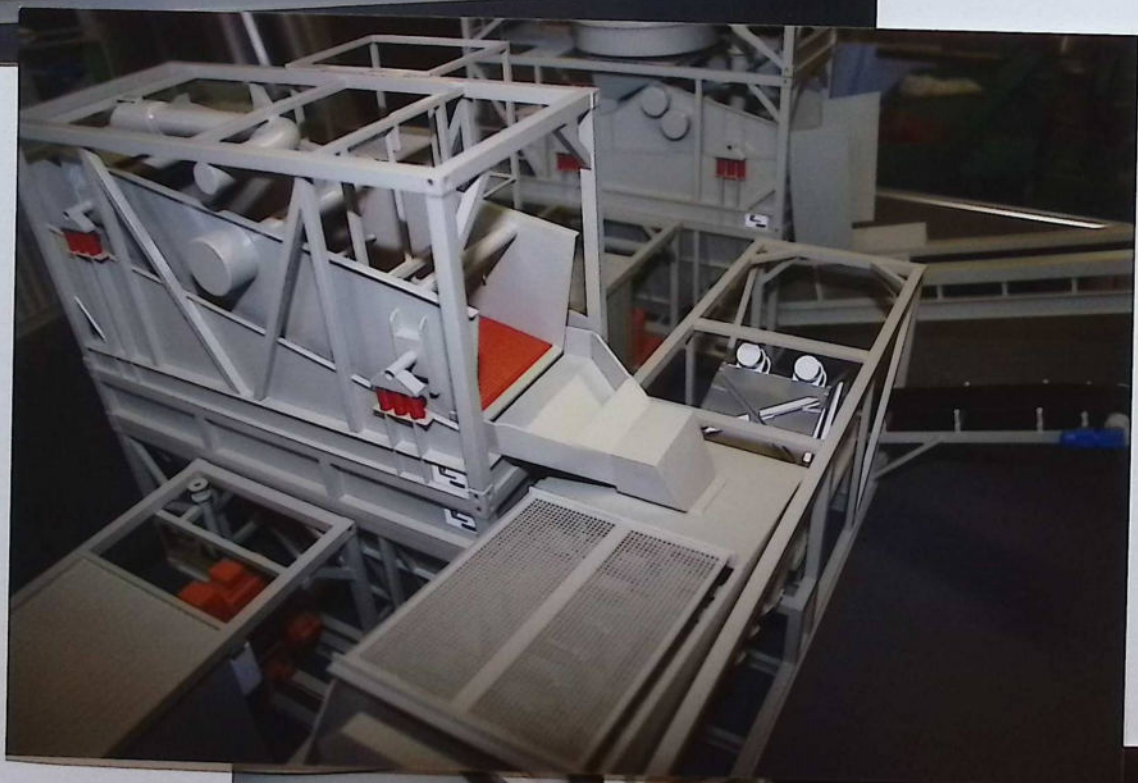
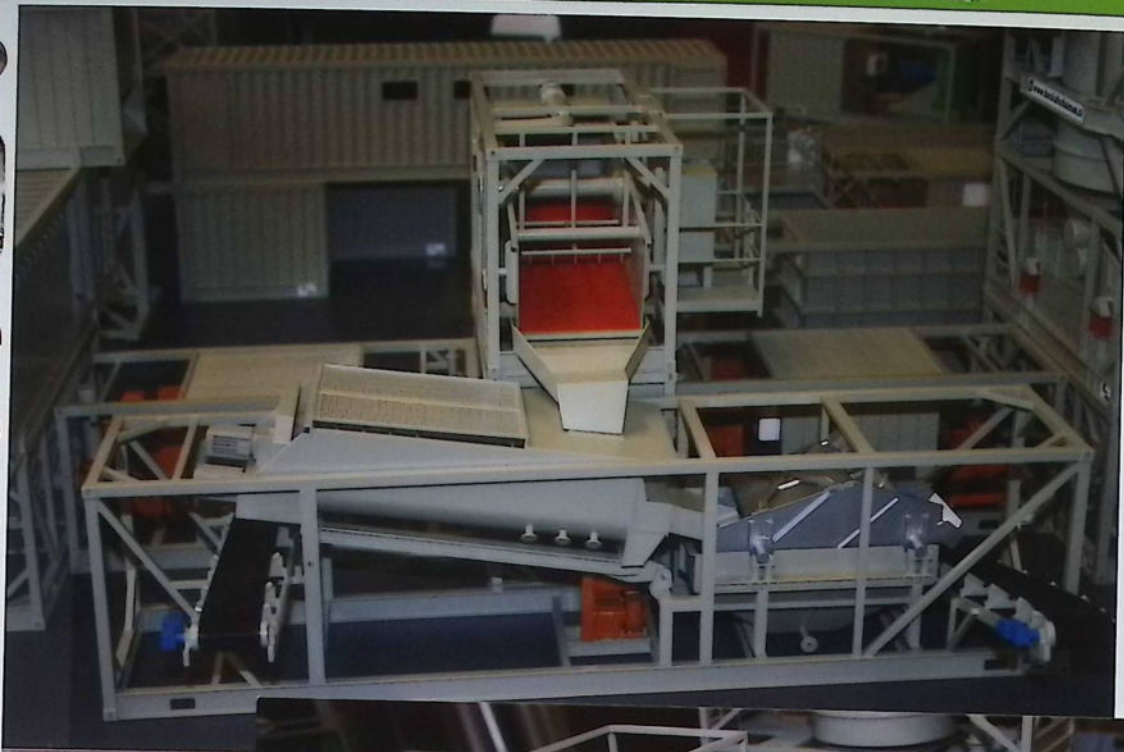
 wicr.
schied / 1125

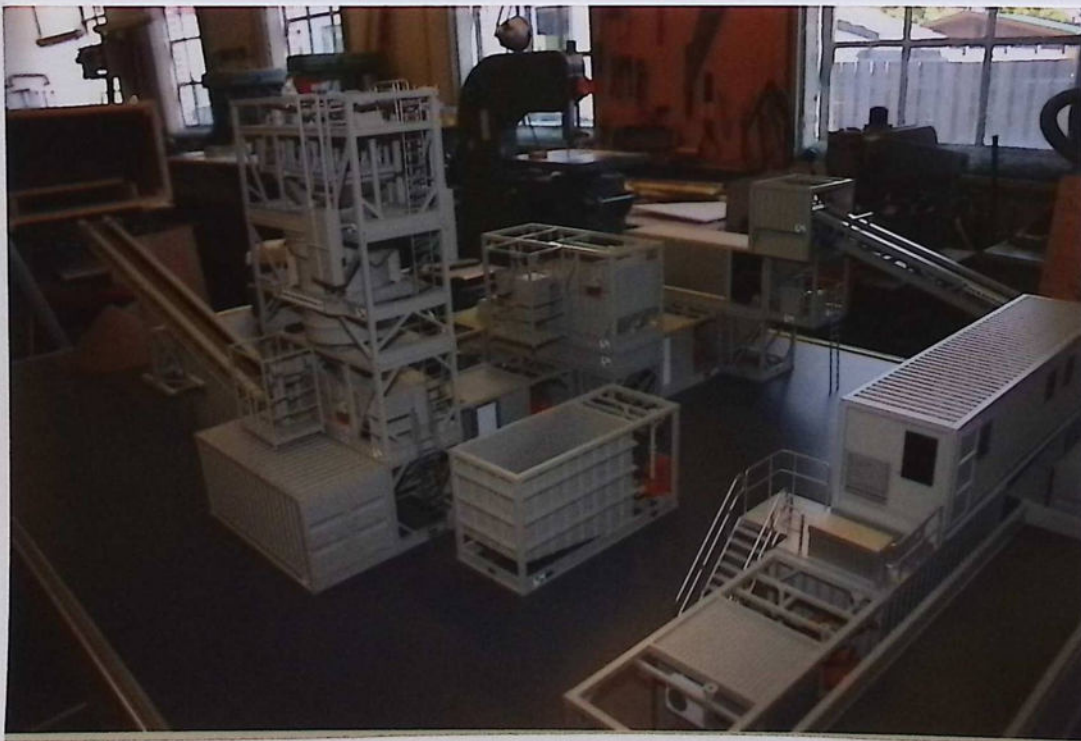


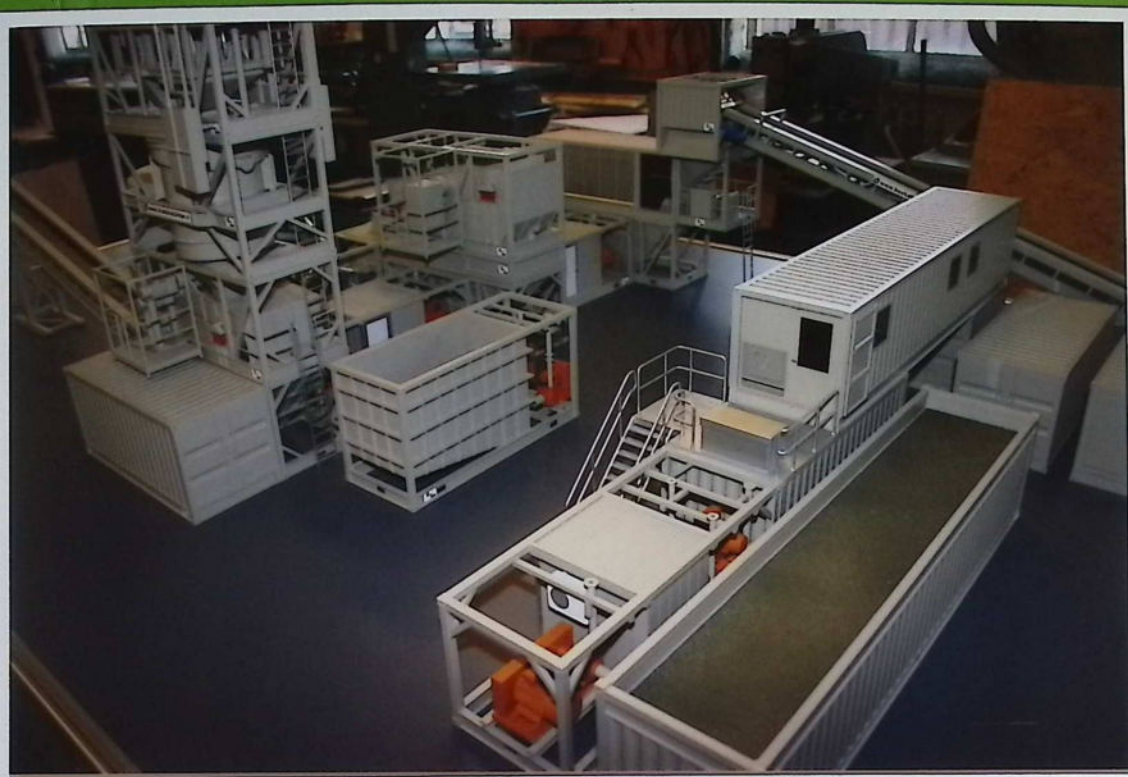




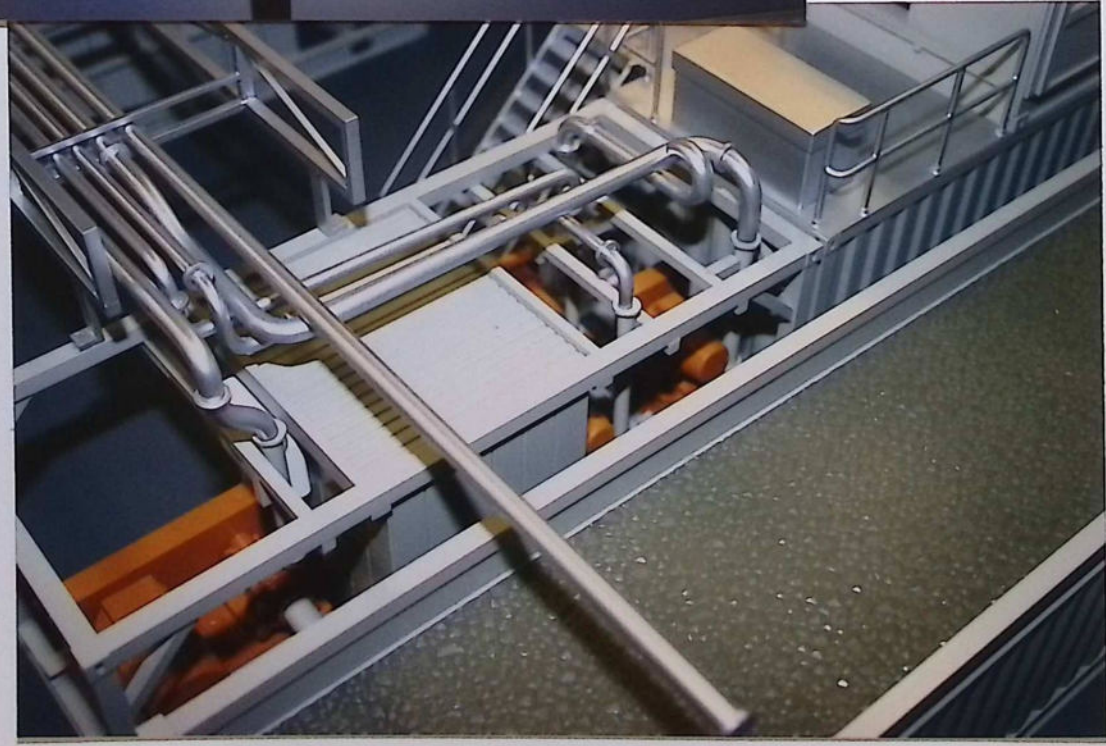
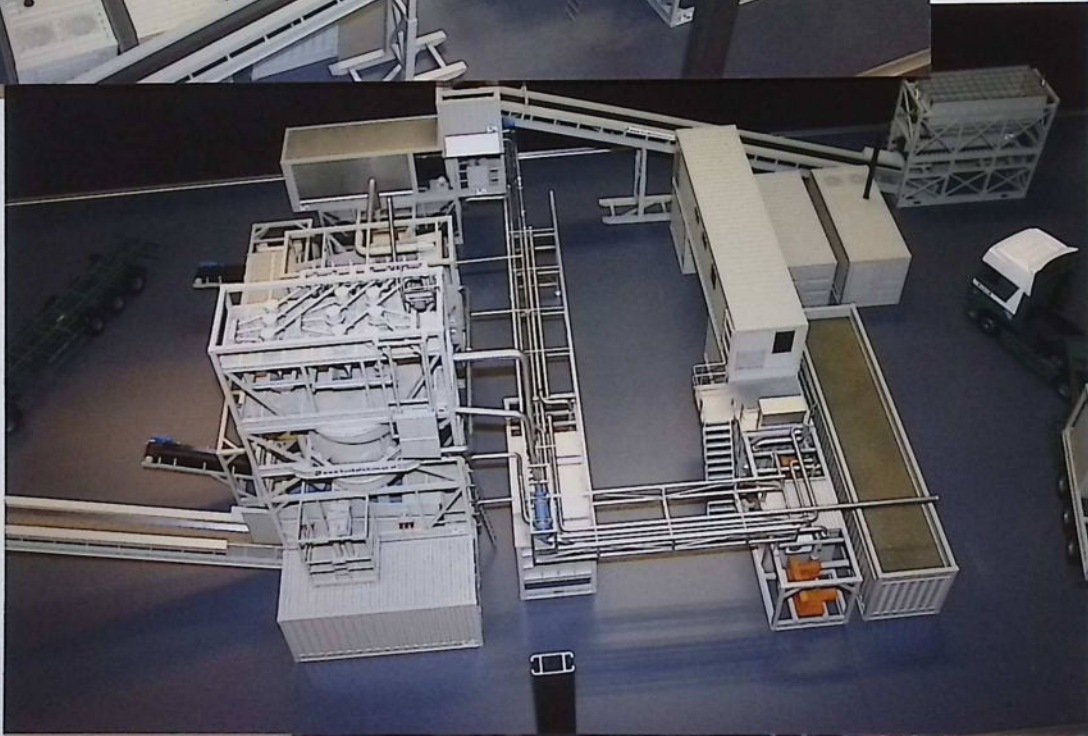
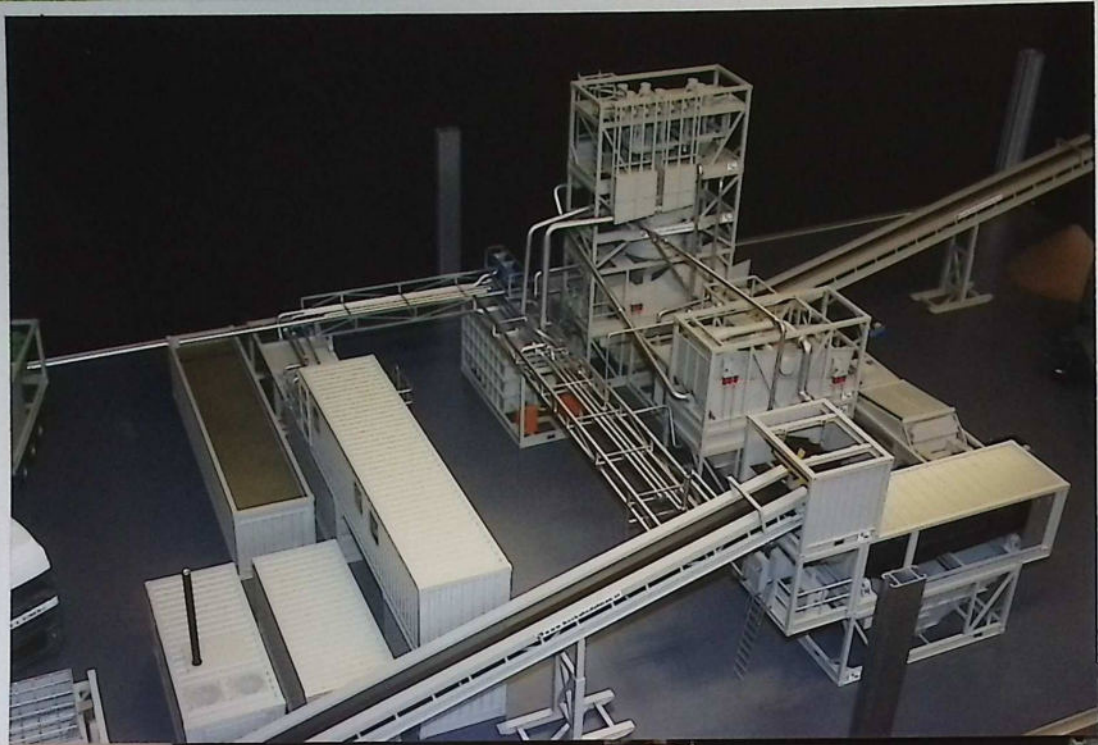


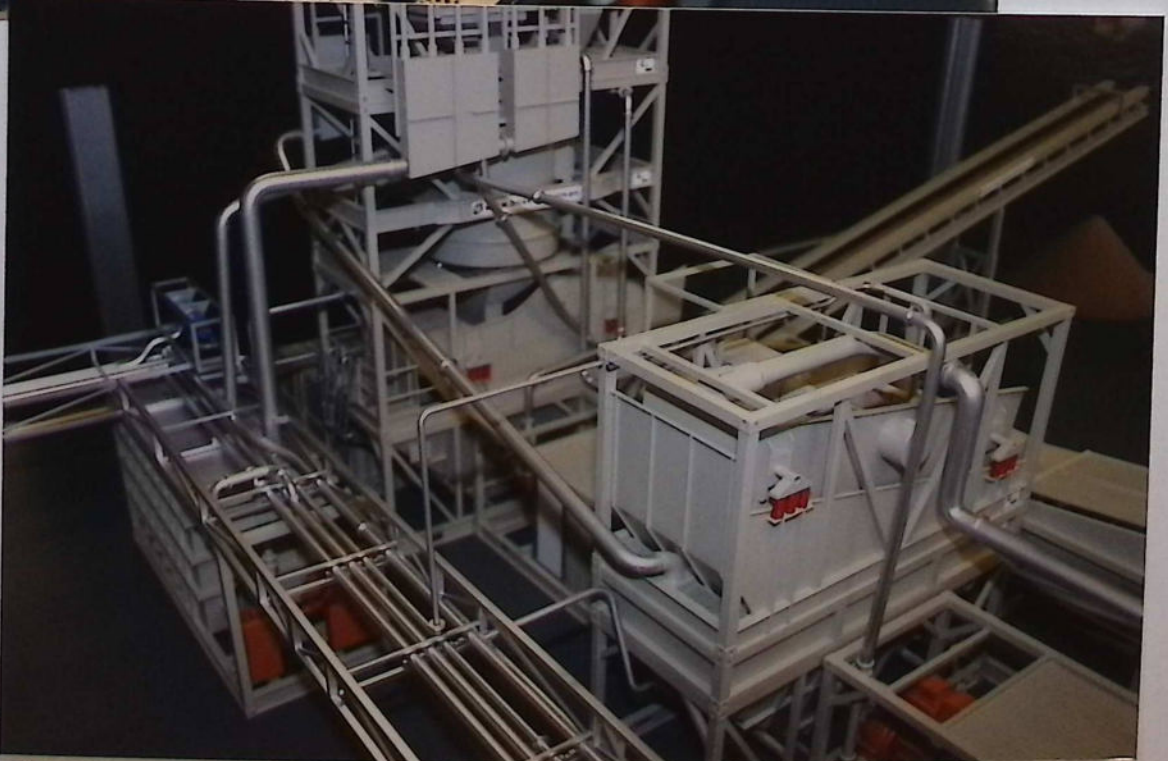
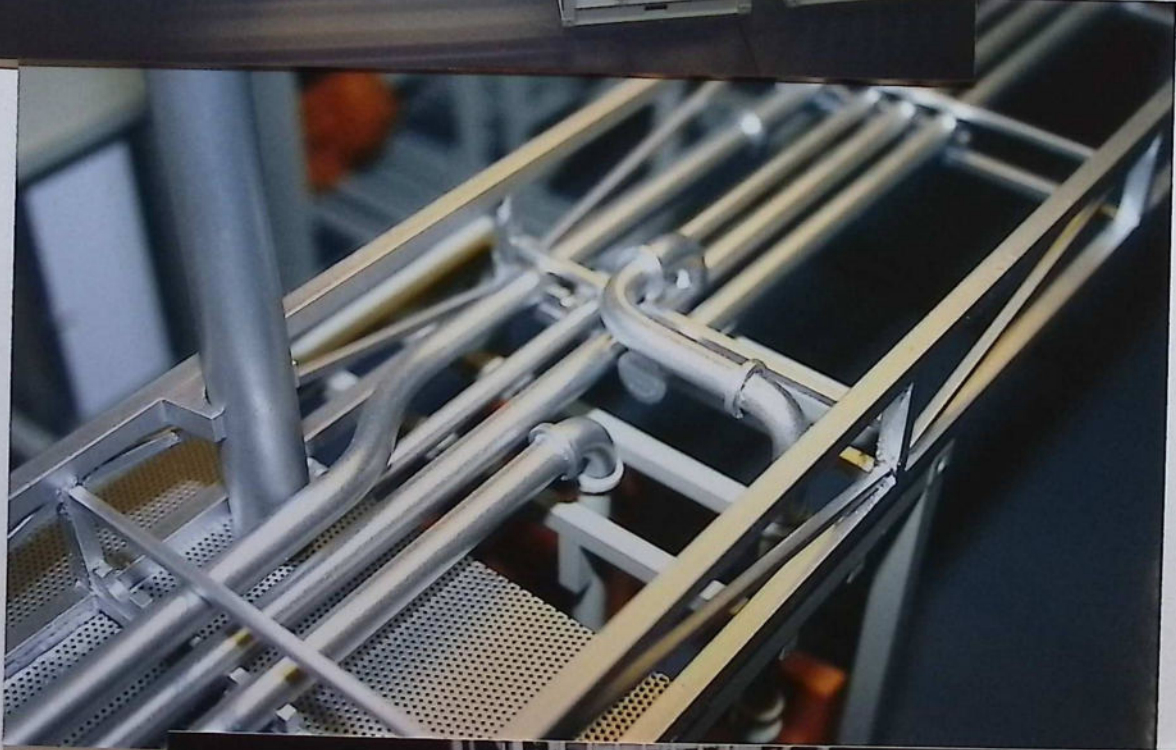
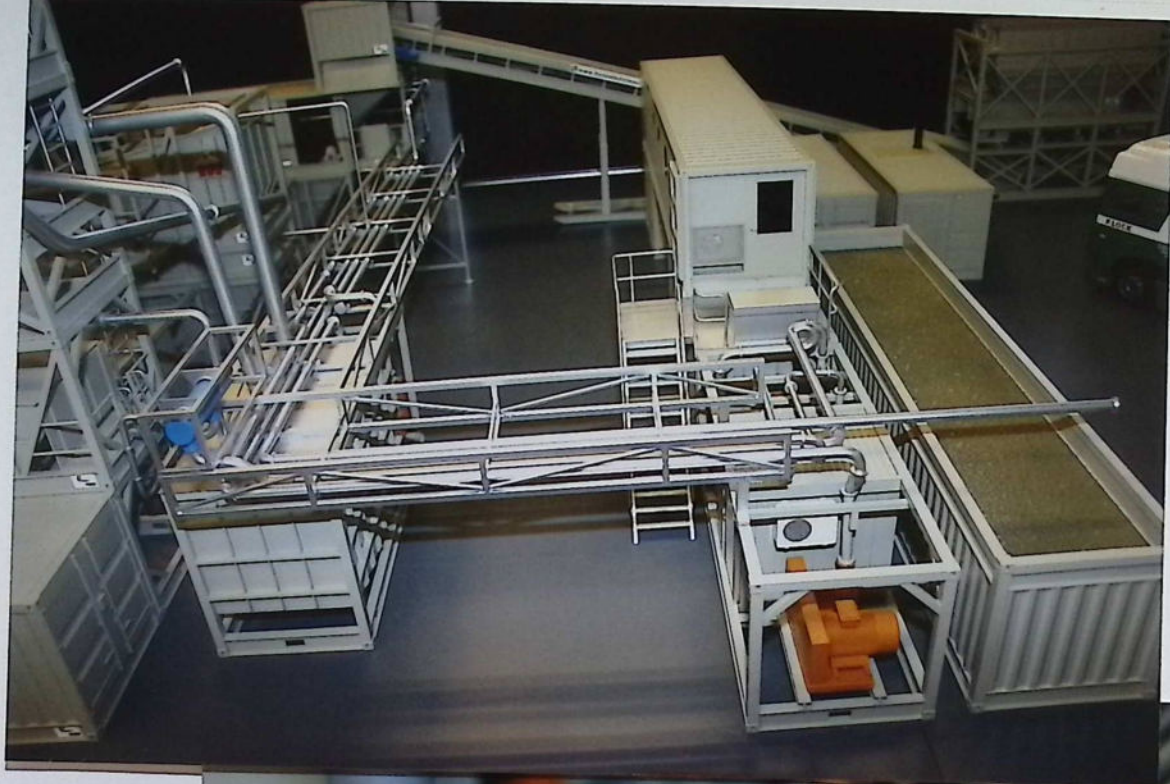


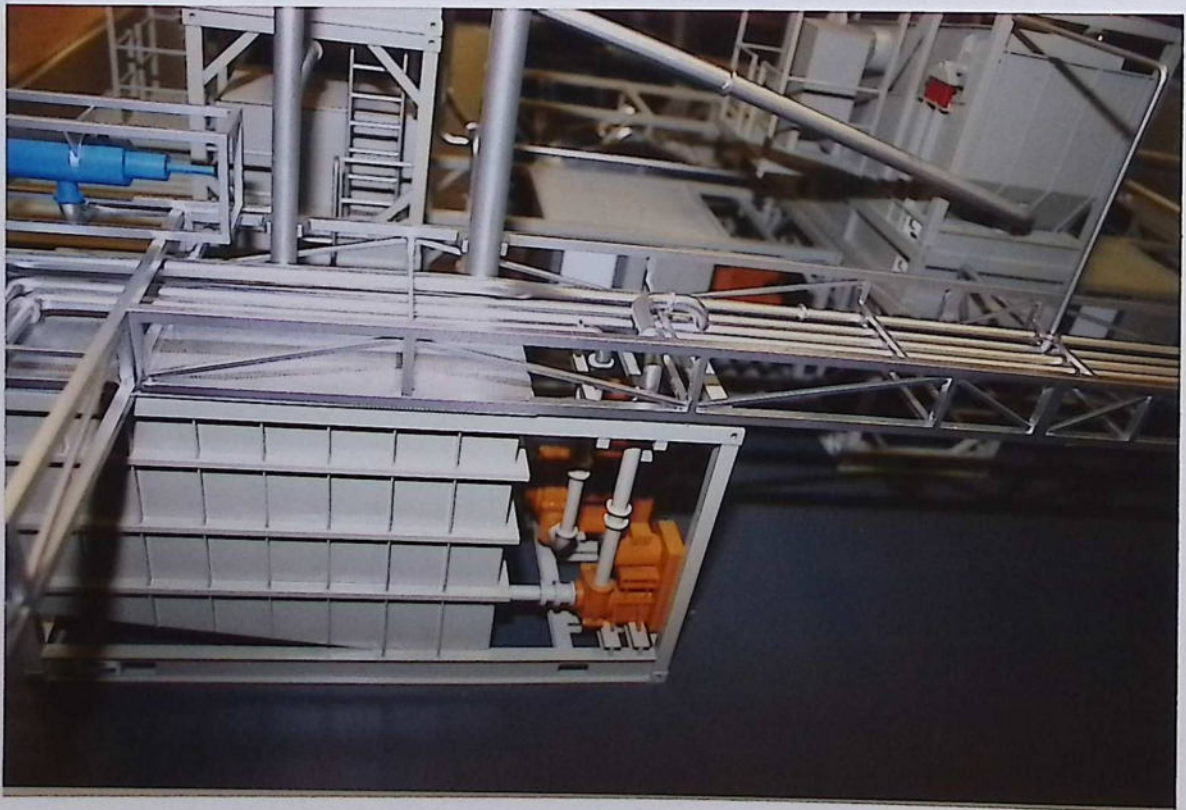
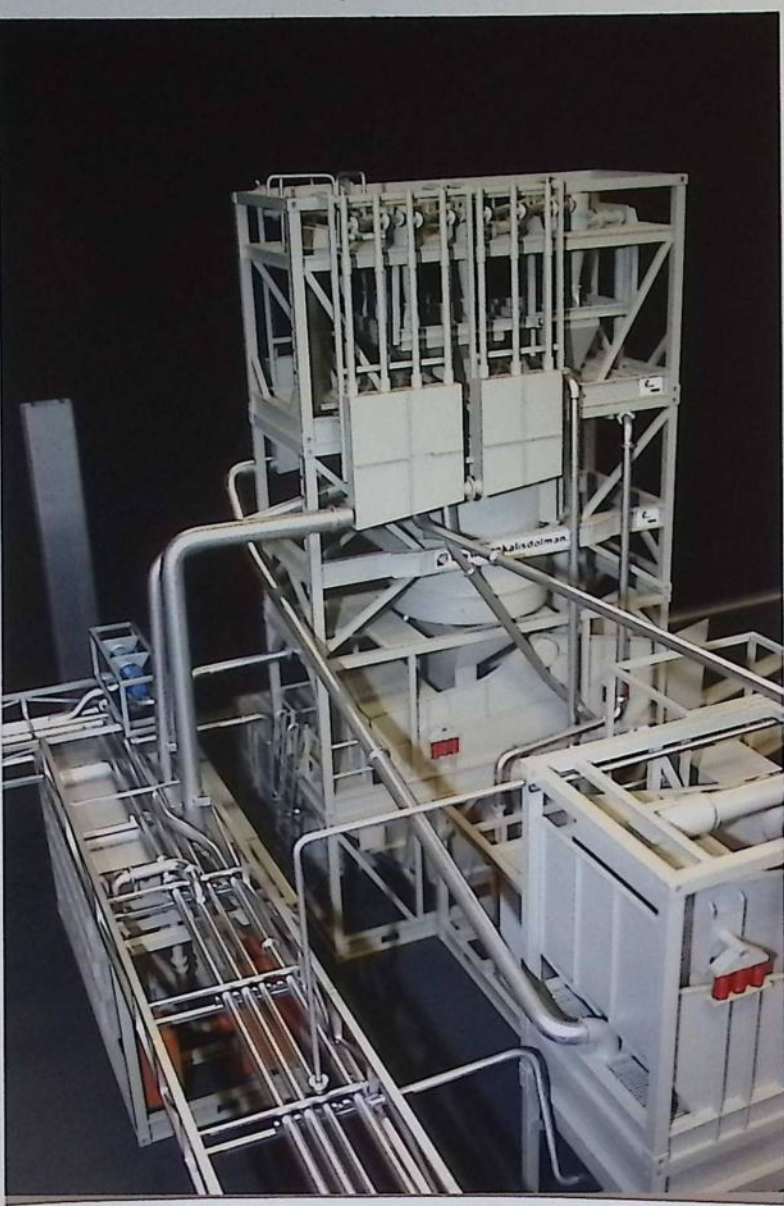


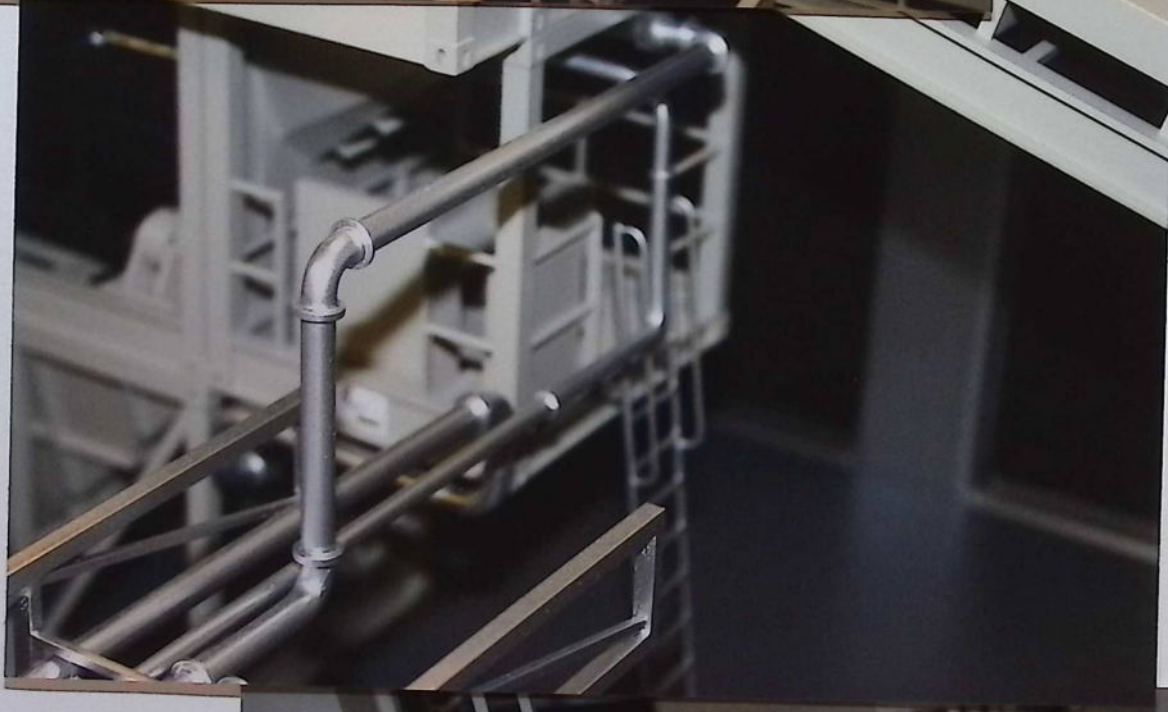


2 aflevering
3/11/07.
deelbare tafel
vitriïe
Leidingen
kist.










23-6-2010

3 zandplaatjes
A4 format.
Feedslip.



HYDROHAMMER S900 20/5/2010

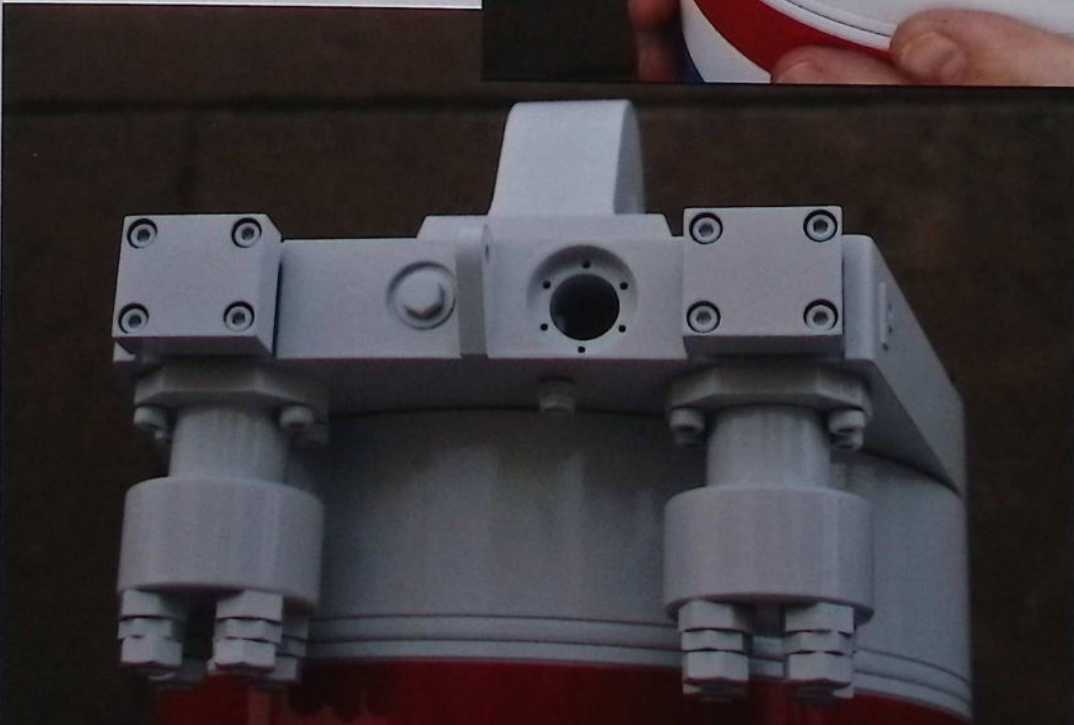
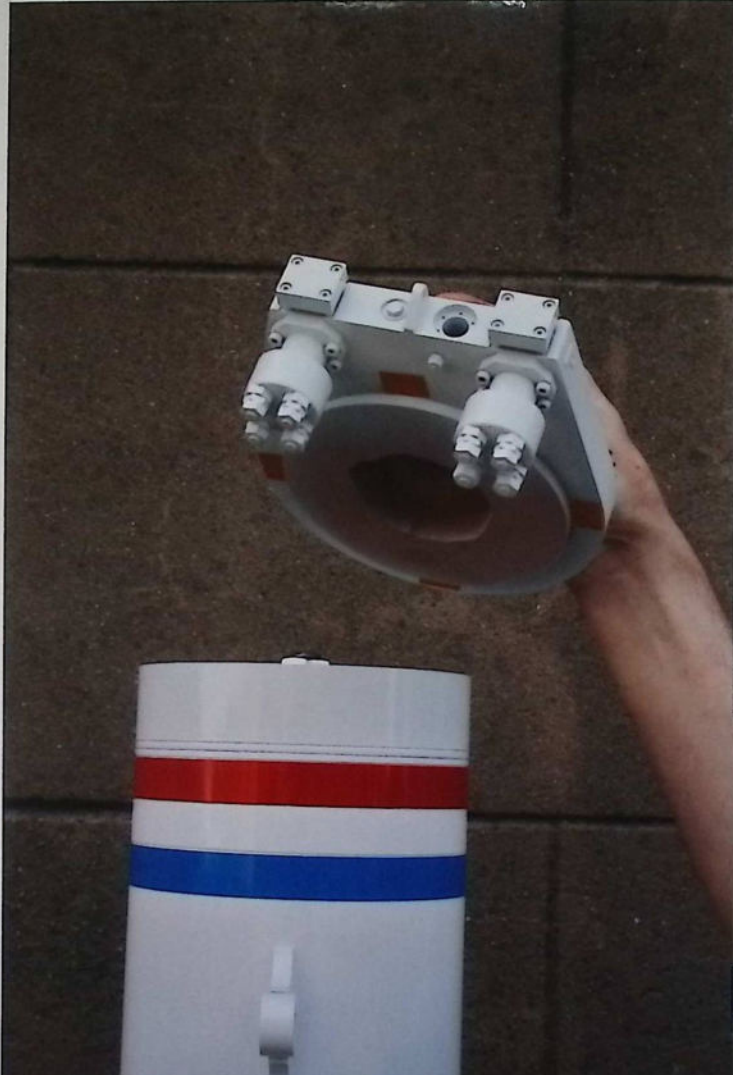


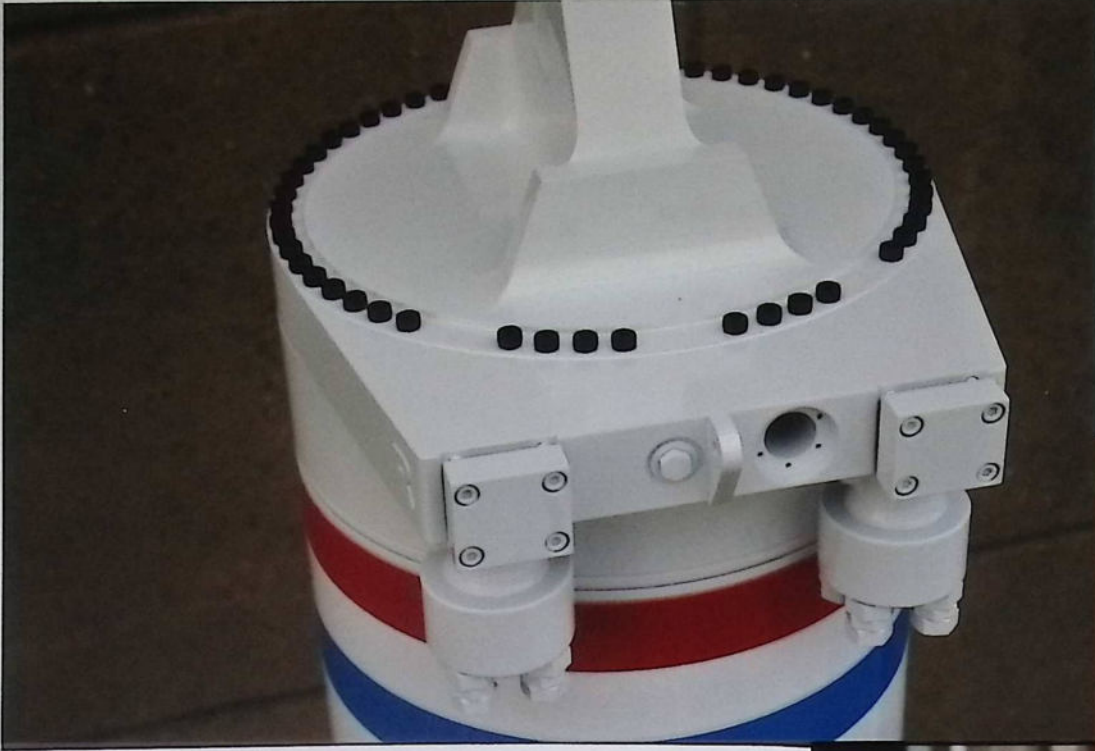
Schaal 1:10  cur + fr.









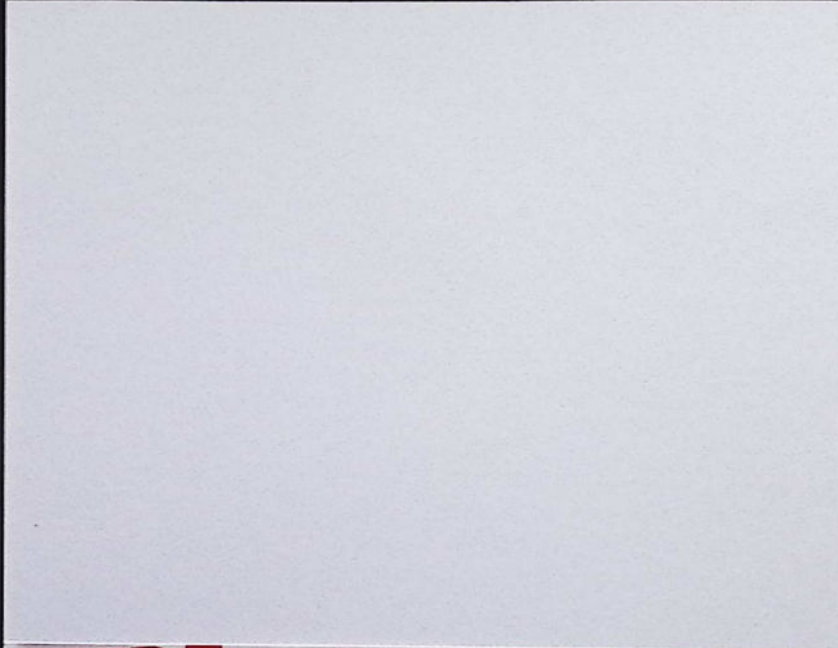


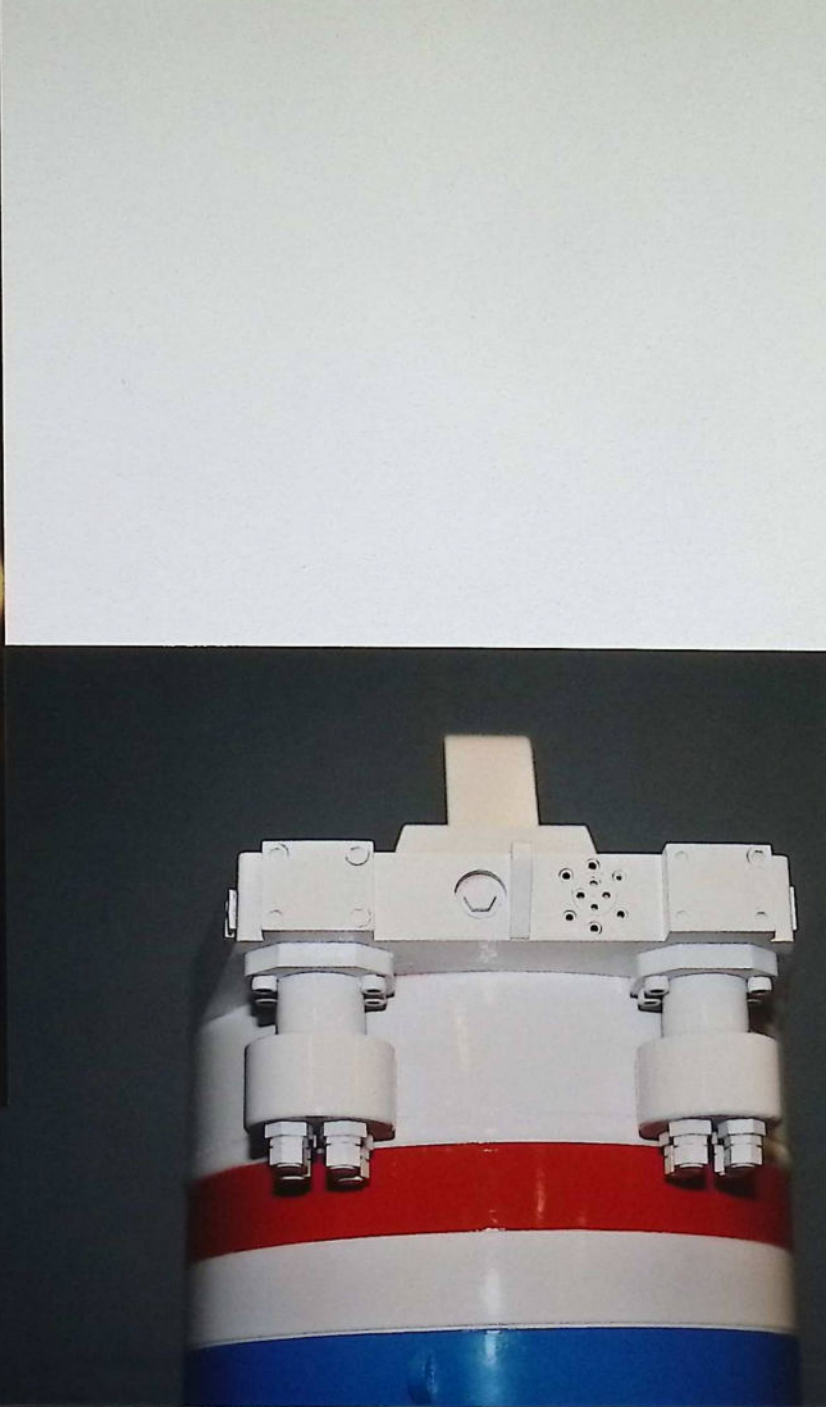
HYDROHAMMER S 1400

1:10  cur + fr.

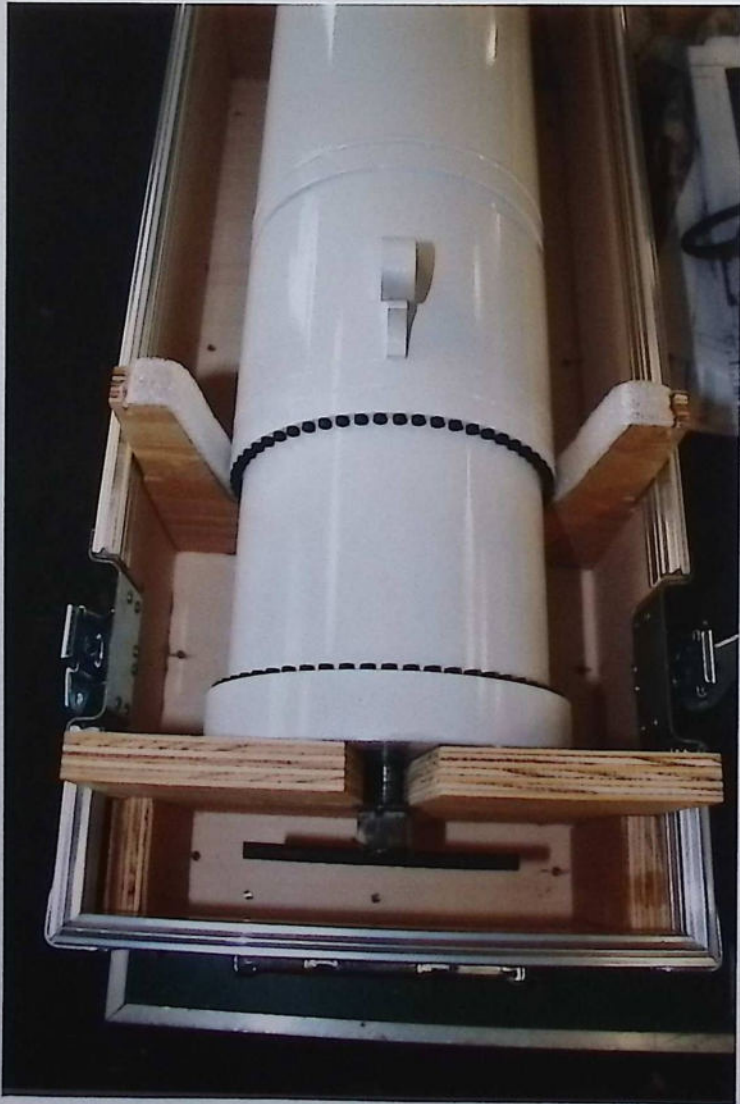
10/11/2010

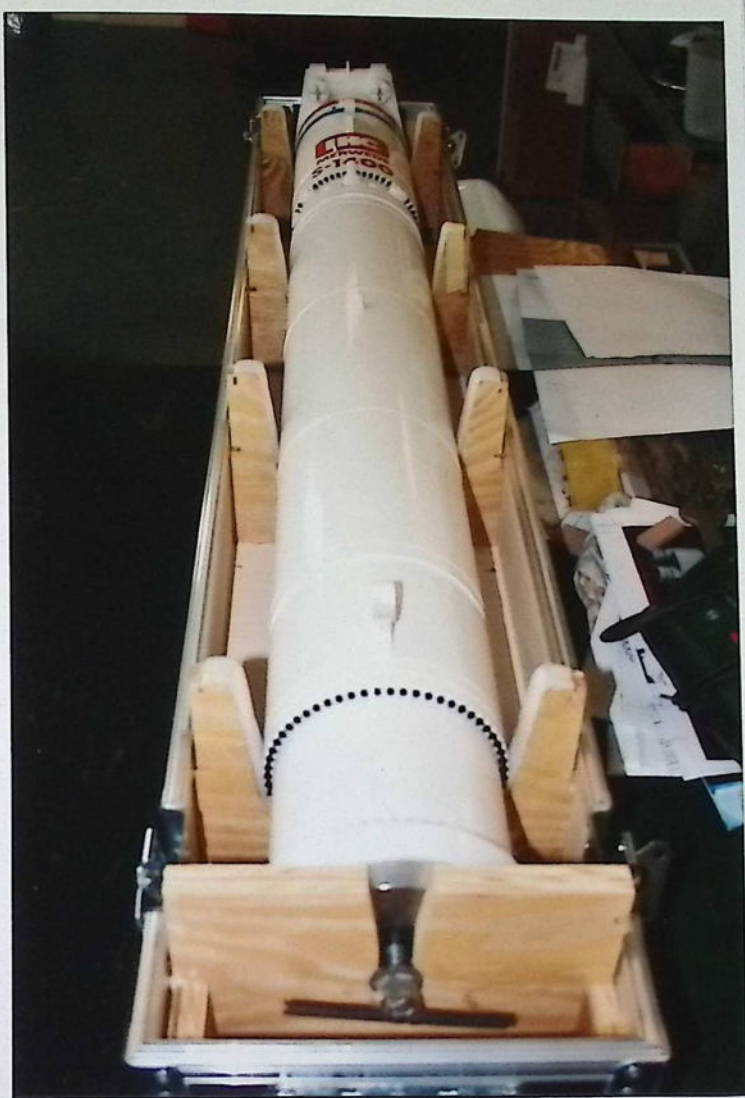






BEKISTING
FLIGHT CASE
HAMER








FLIGHT CASE
SLEEVE

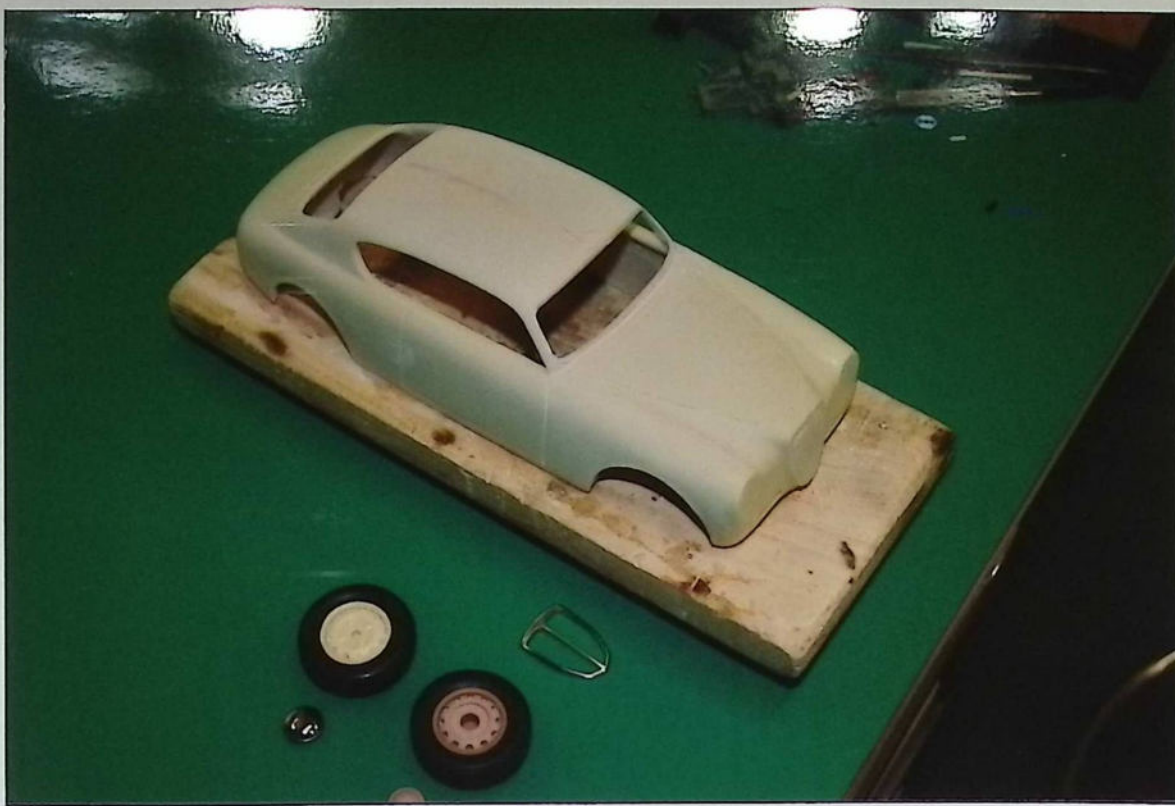


2-11-2010

HYDROHAMMER
1110  + 1/2 S 800







28-2-201

H. de VRIES

LANCIA

(Rette balardo)

86 cm.

EIGEN KIST





DUBBELMAN
RIDDERKERK

HYDROHAMMER

S 150 1:5

2/9/2011

L-H: 245 cm







A growing company needs a reliable foundation.

IHC Hydrohammer congratulates CIS with her new office.

Hydrohammer		Sleeve	
Type	S-150	Pile Size	36"
Max. net energy/blow	150 kNm	Weight Sleeve	3.9 tons
Min. net energy/blow	15 kNm	Forged Anvil	
Blow rate (max. energy)	44 bl/min	Model scale	1:5
Weight Ram	7.5 tons		
Weight Hammer	16.2 tons		
Operating pressure	280 bar		
Max. pressure	350 bar		
Max. oil flow	460 l/min		

VERKISTING :



IMF

**DUBBELMAN
RIDDERKERK**









3 Mock-up's
Feedschip
1:20
± 70x70 cm.

3 grondplaten gefreesd.
+
206 uur.

14/12/11

2 vlakke ramen
met stijl





2^e vlakke ramen
zonder styl.

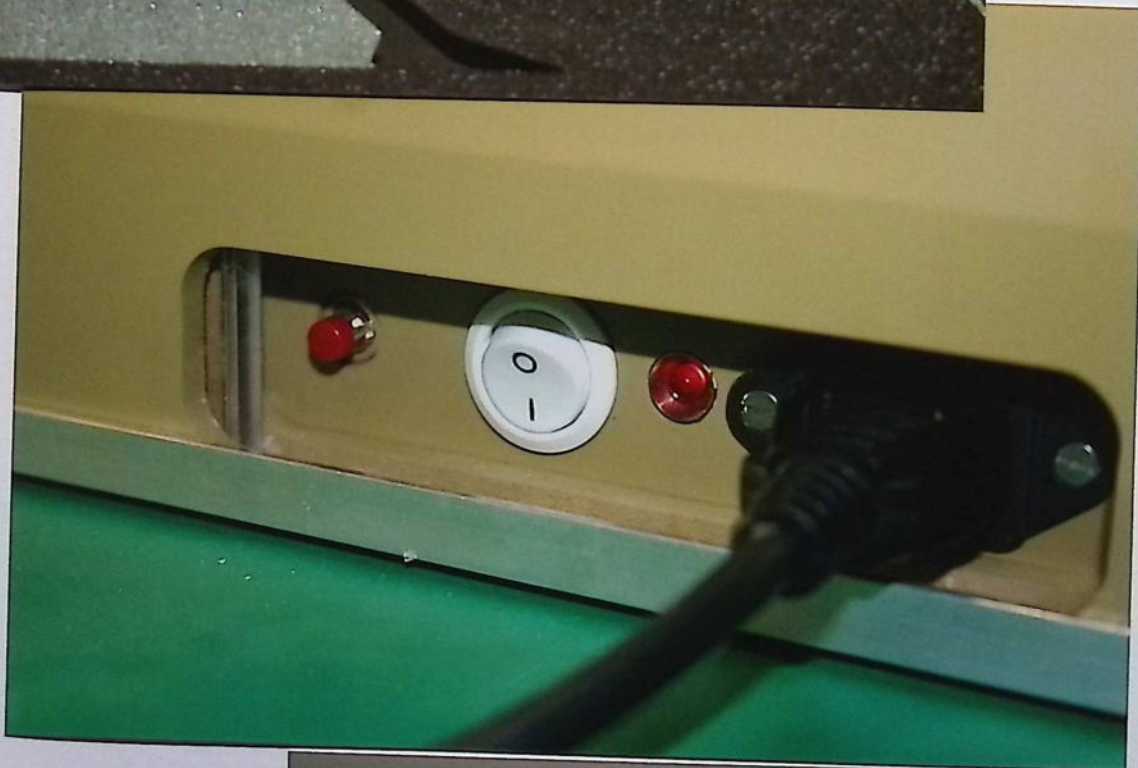


3^e gebogen
ramen
zonder styl

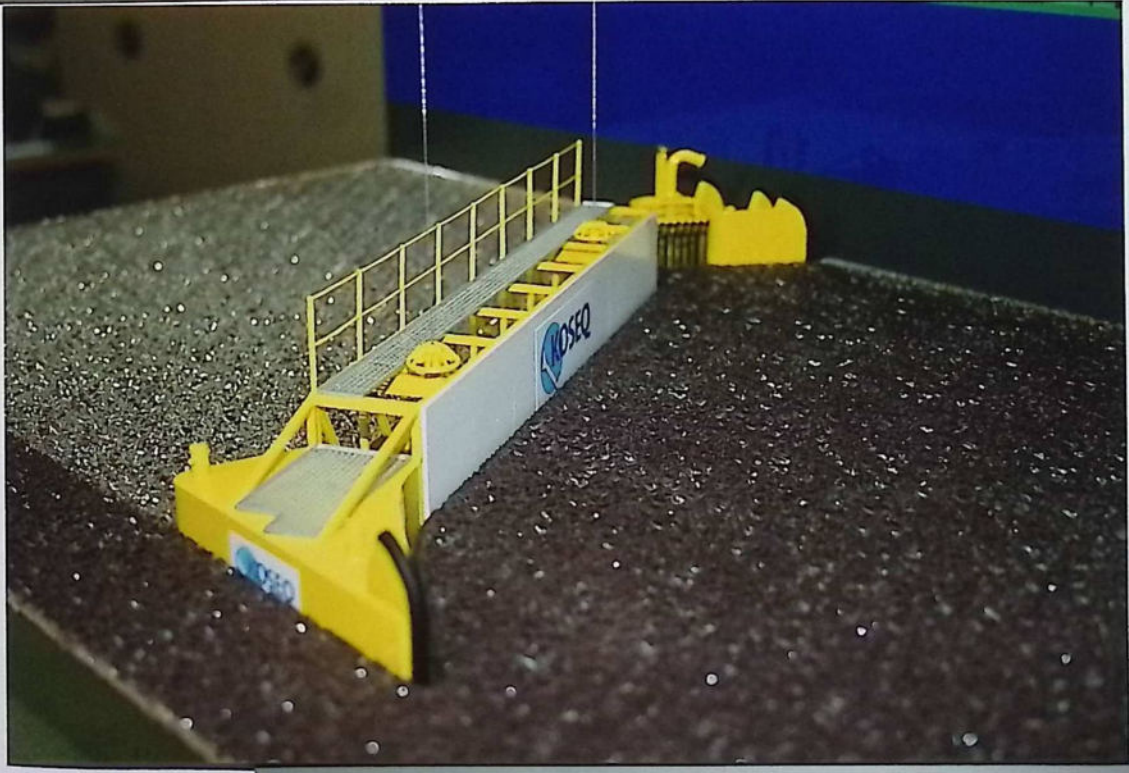


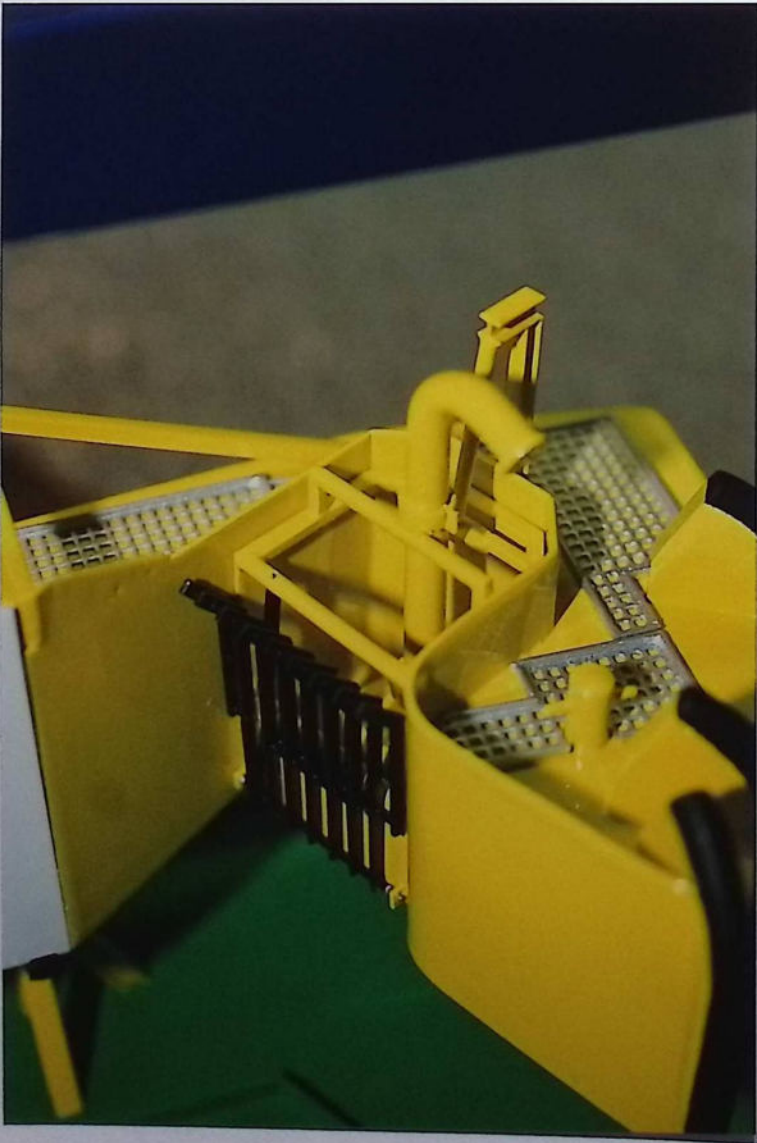


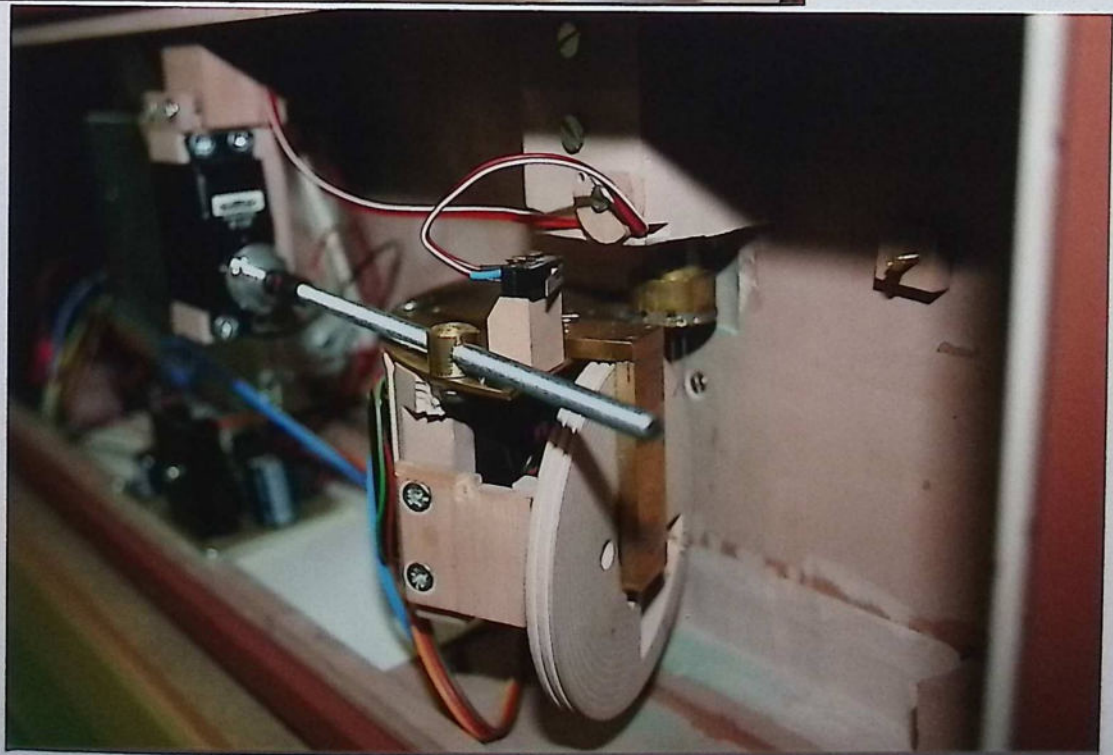
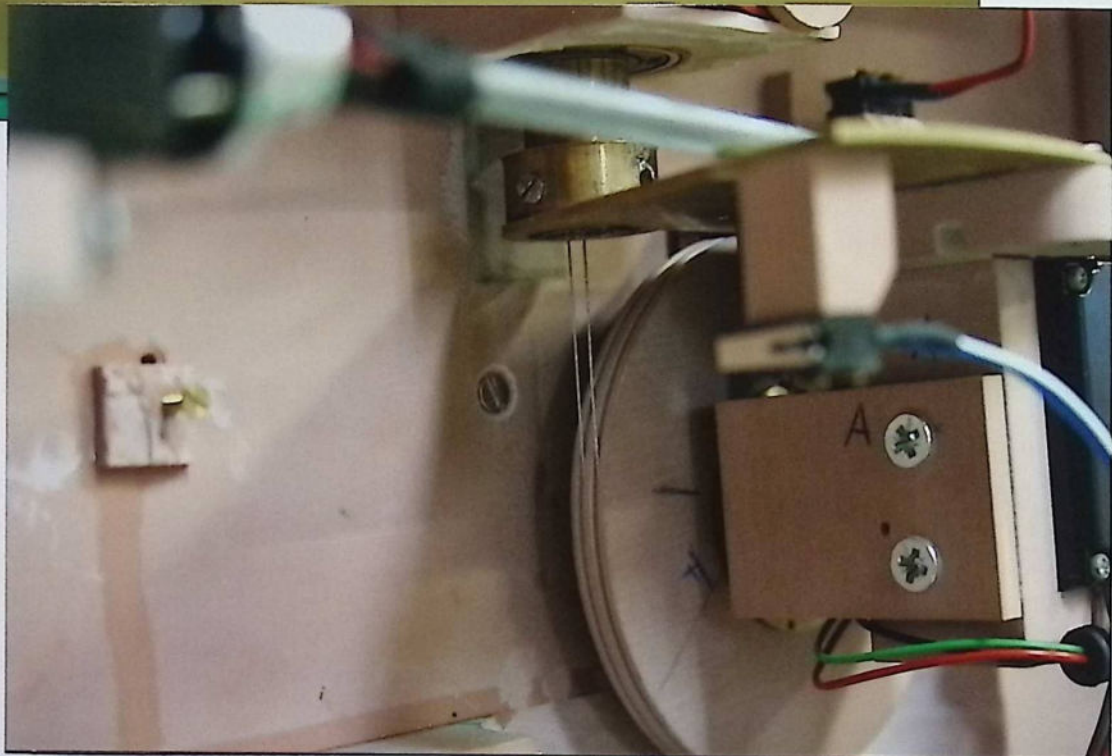
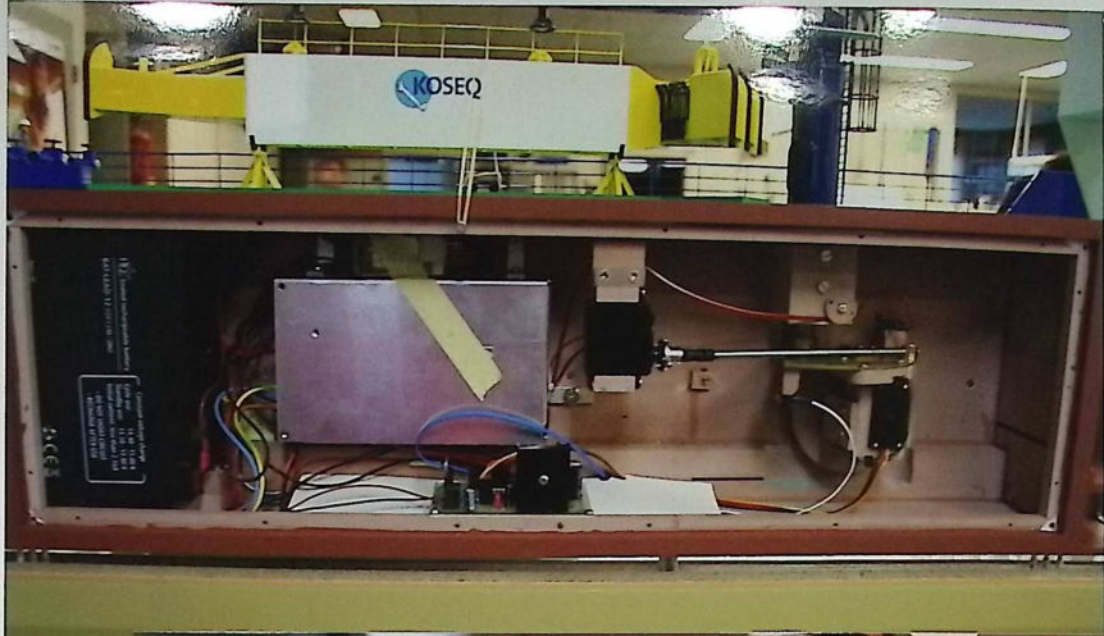
KOSEQ
1 veeqarmen
78 Cm.
1:40
21-2-2012
596 w.r.

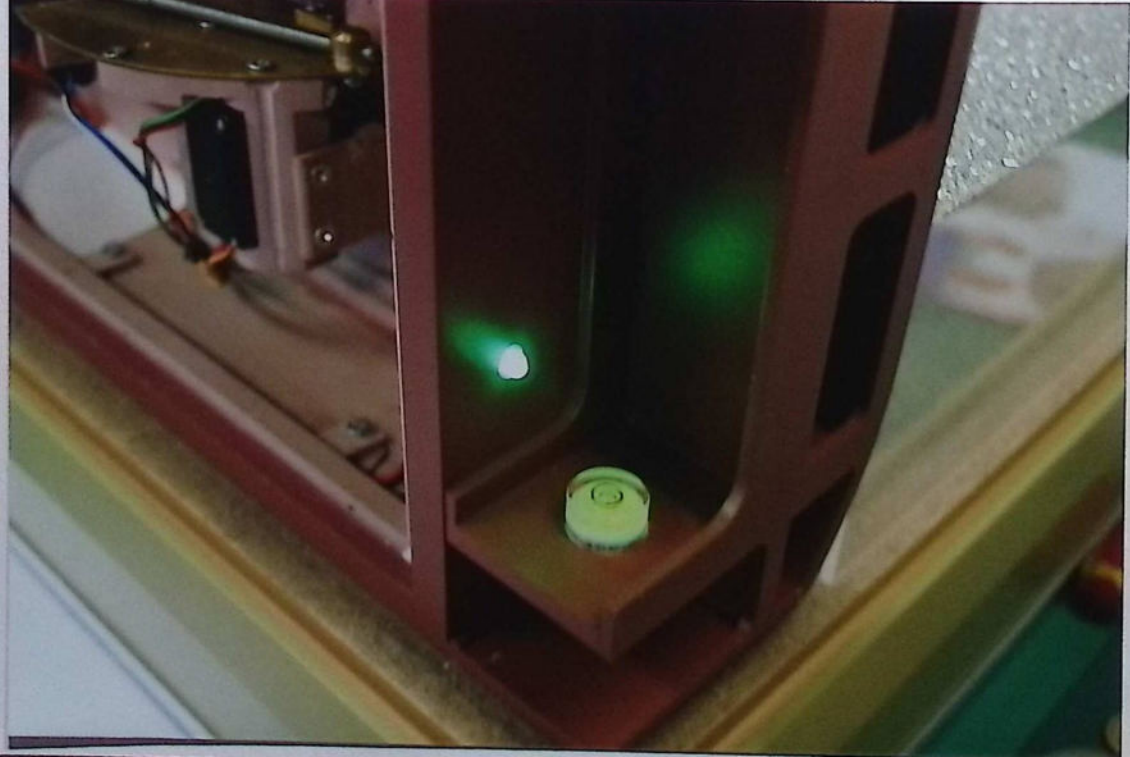
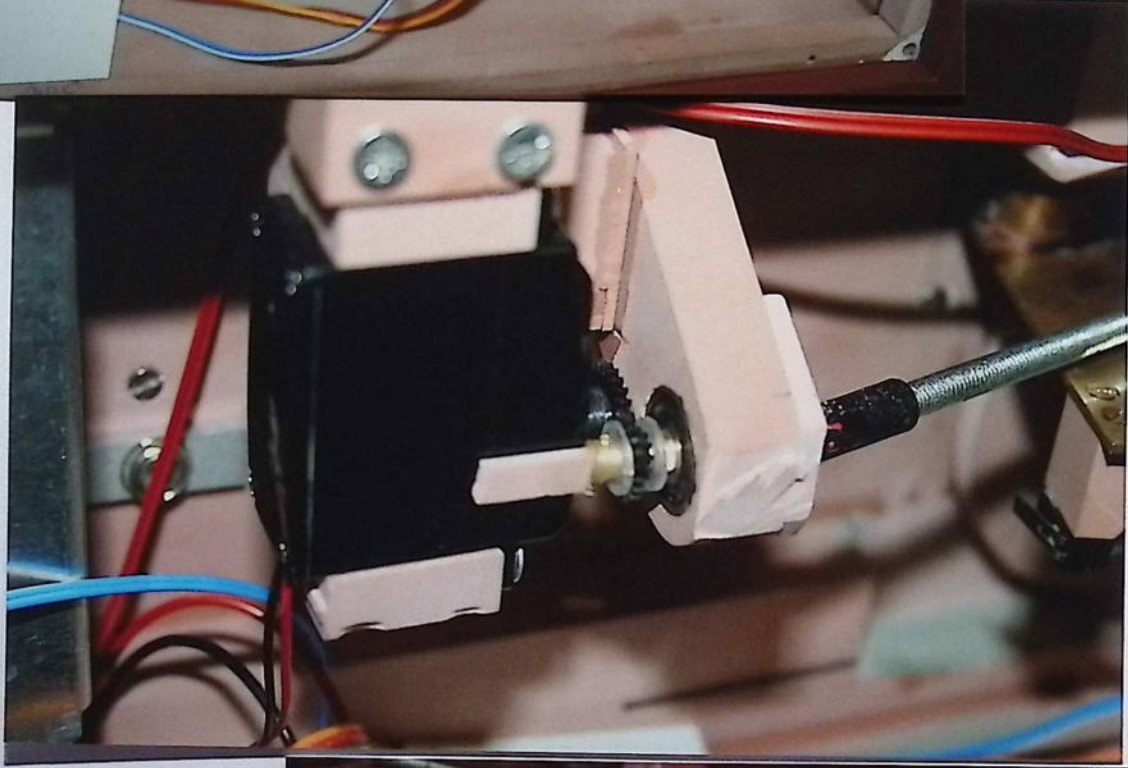
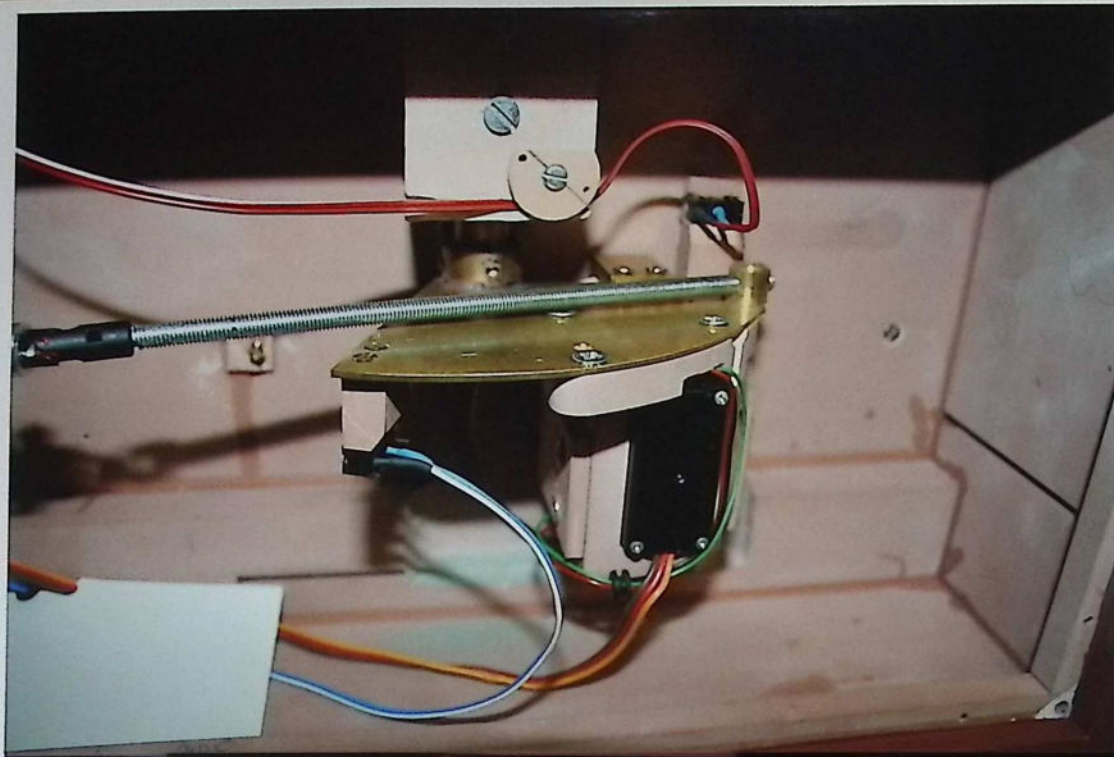












HYDRO HAMMER
H.S.L.
1:100
2-5-2012

81 w/a

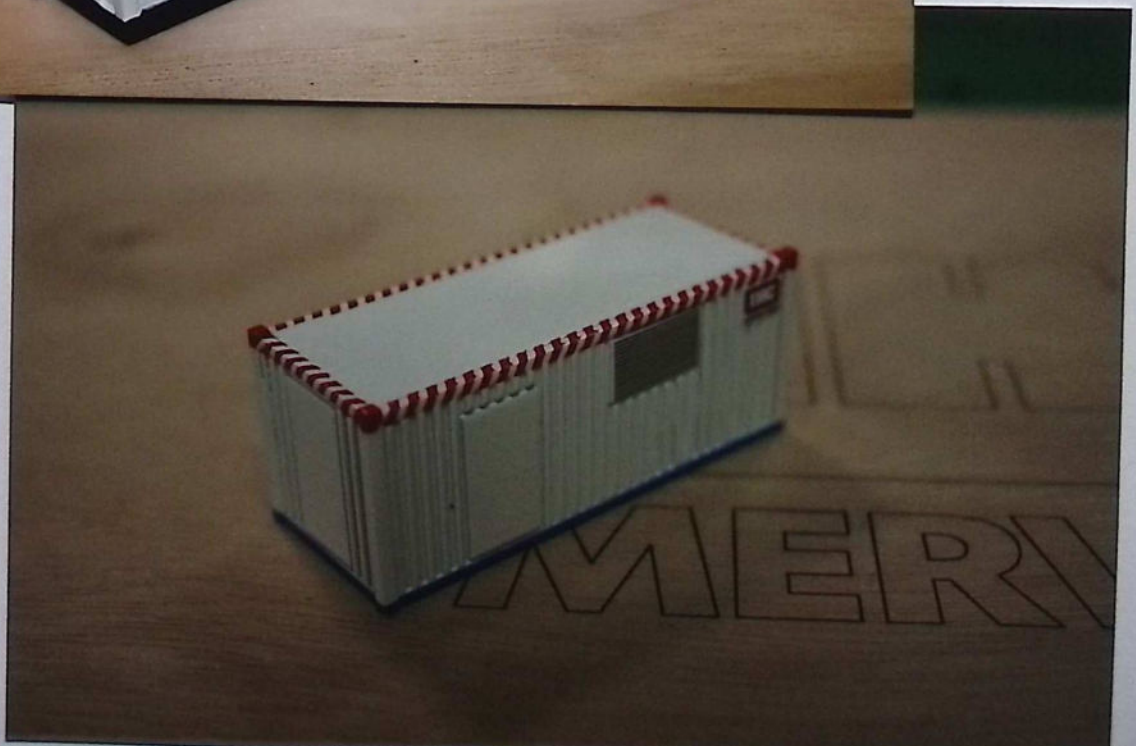
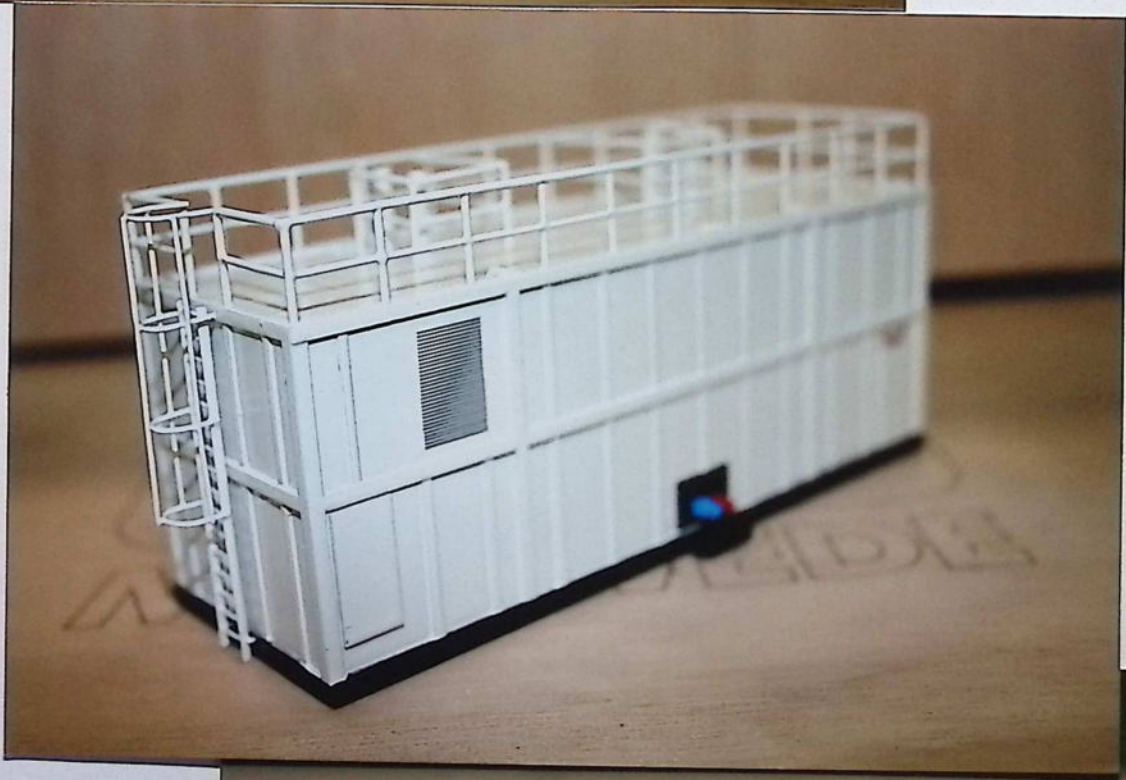


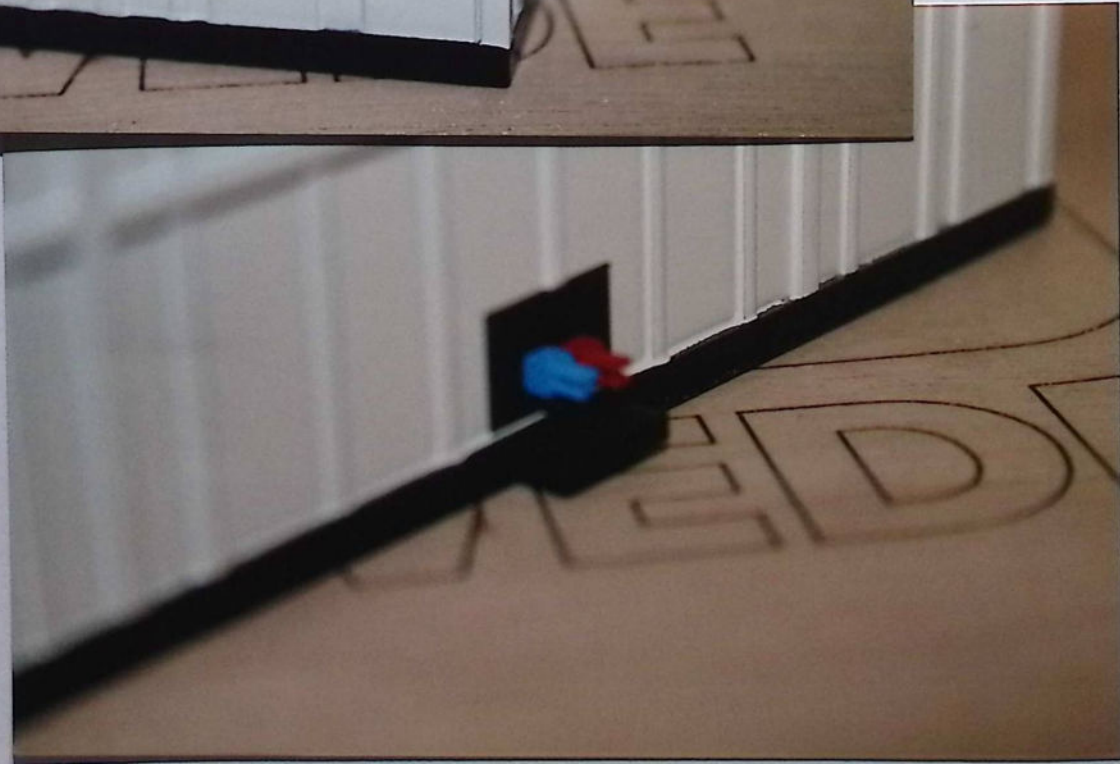
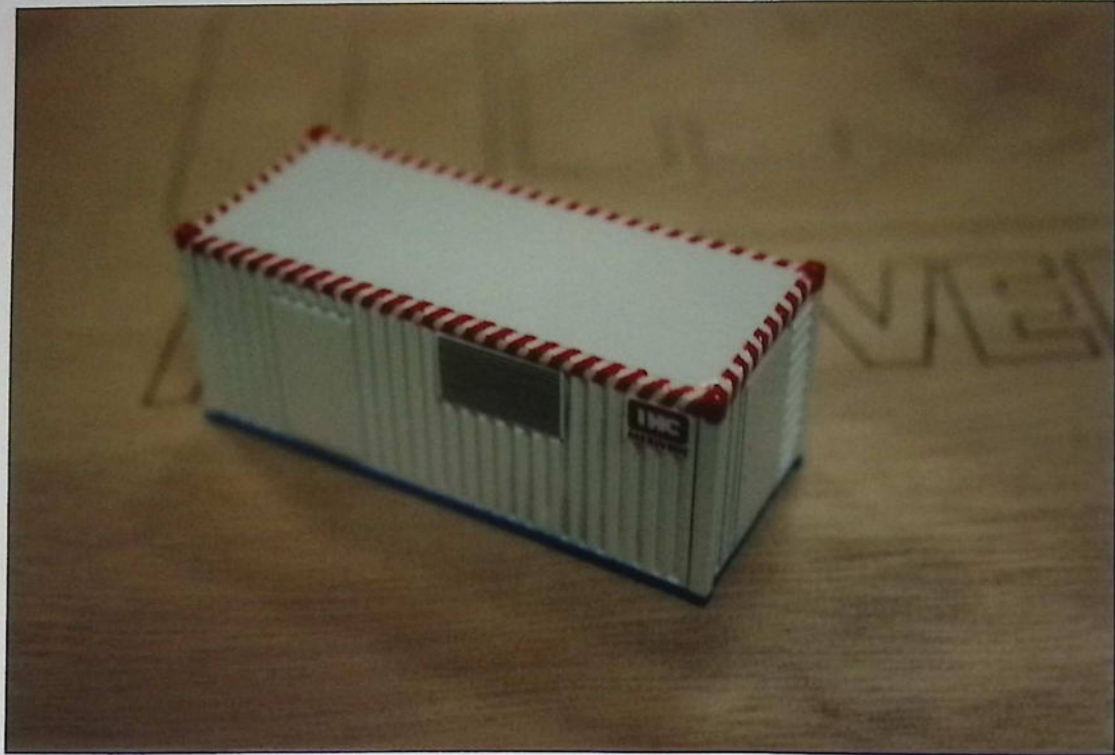


SHL
30/4/12
1:100
8/ver.









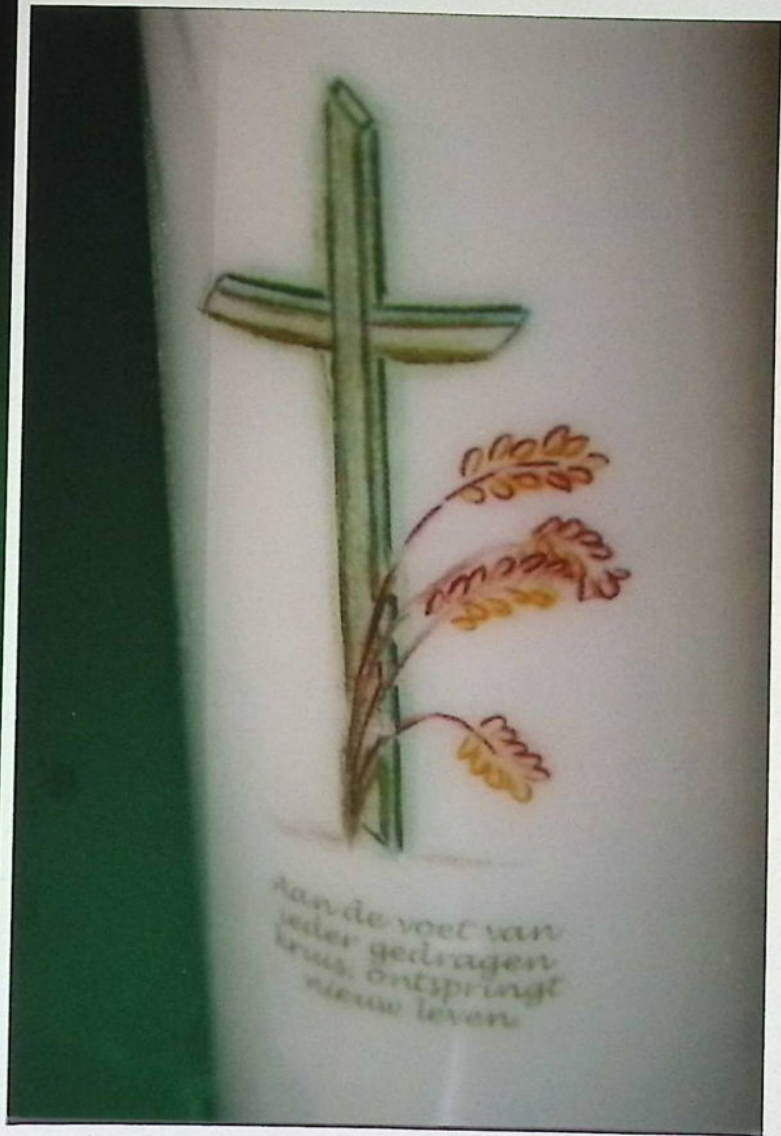


Sevelkerk
12/6/2012

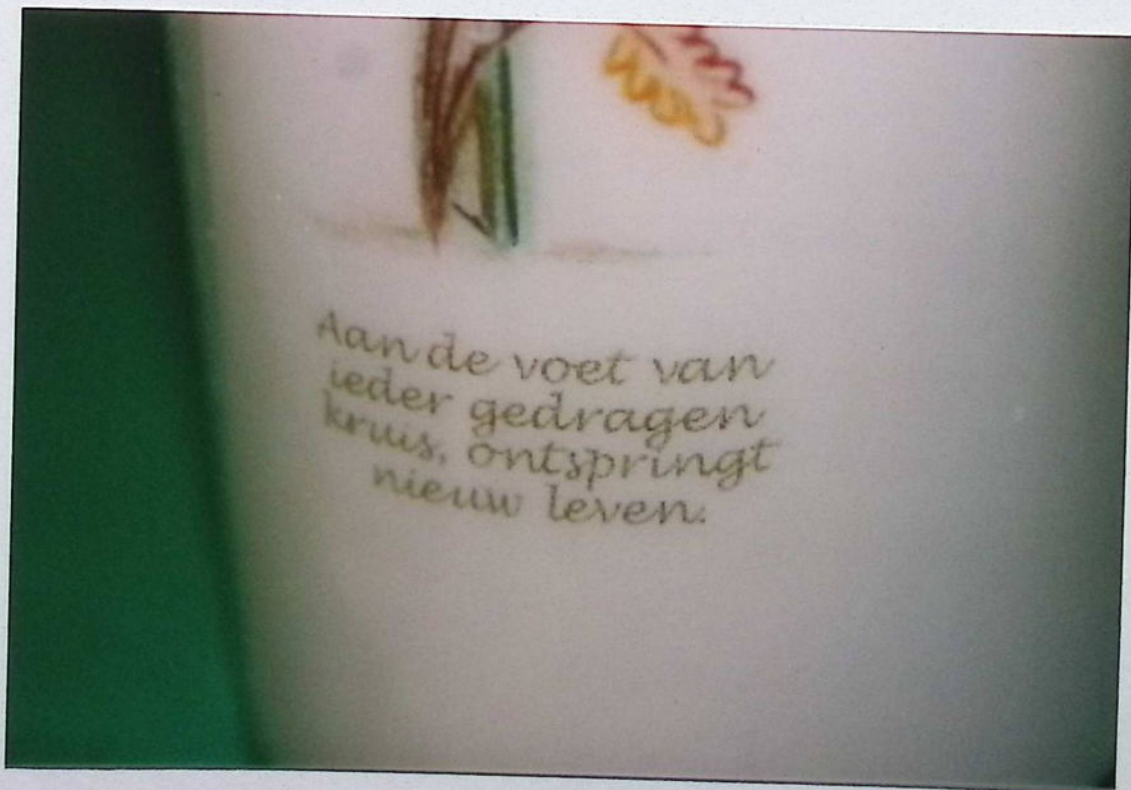


Geschonken door de Stichting
Helmink-de Jong





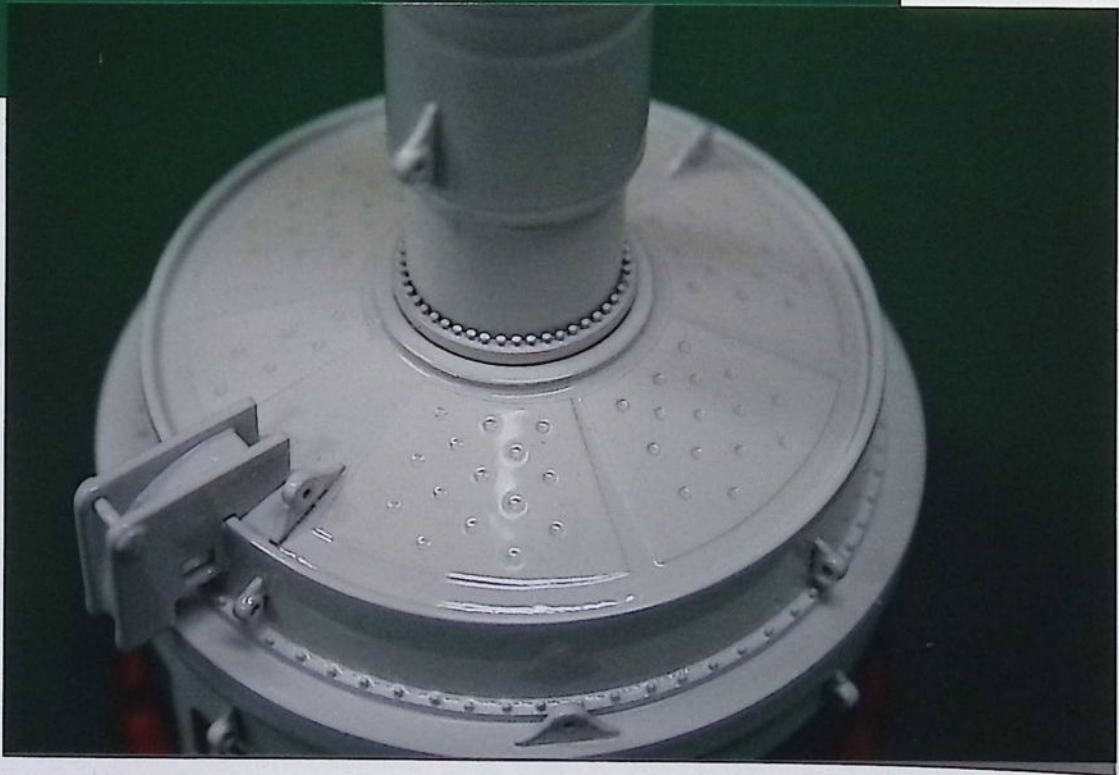
Aan de voet van
ieder gedragen
kruis, ontspringt
nieuw leven.



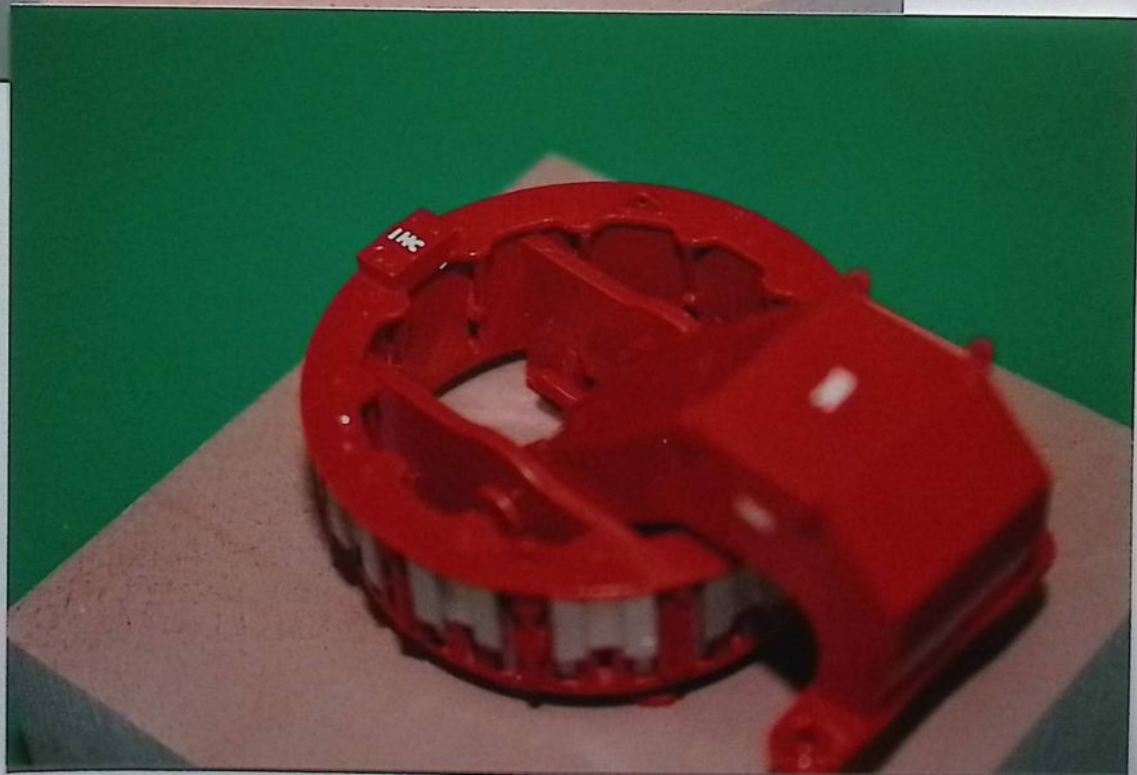
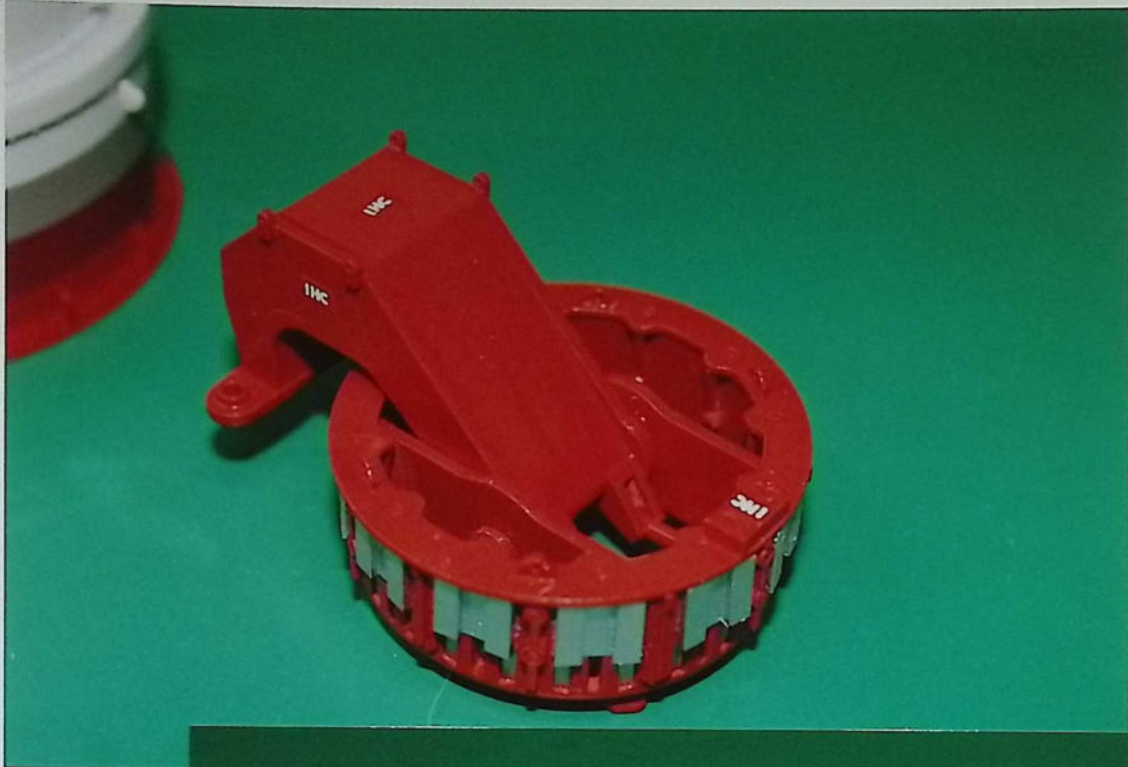
Aan de voet van
ieder gedragen
kruis, ontspringt
nieuw leven.

LIPENDING/S 2000
1:100
64 uur
31-1-2014







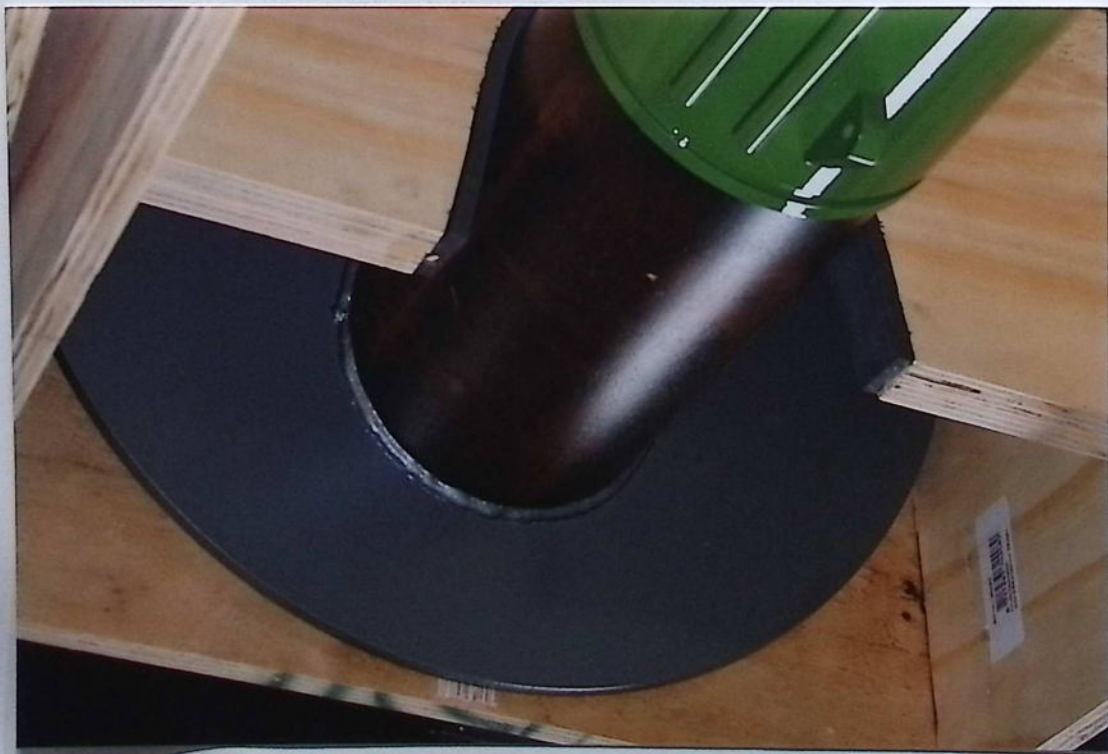


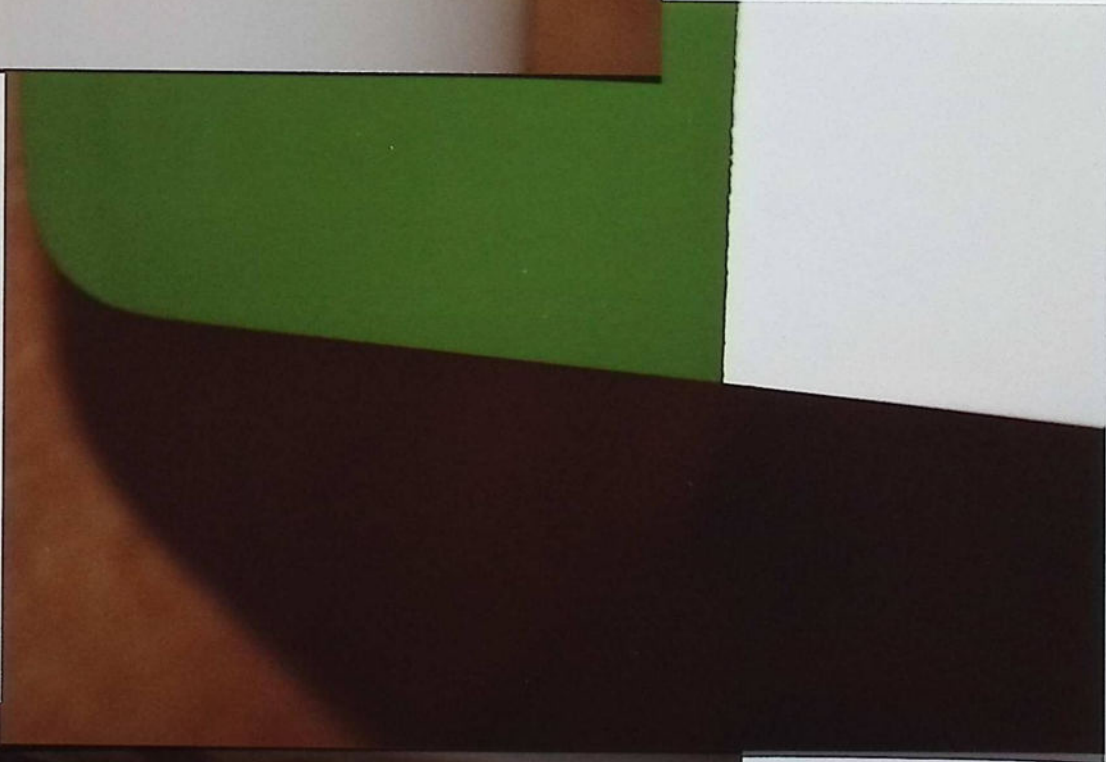


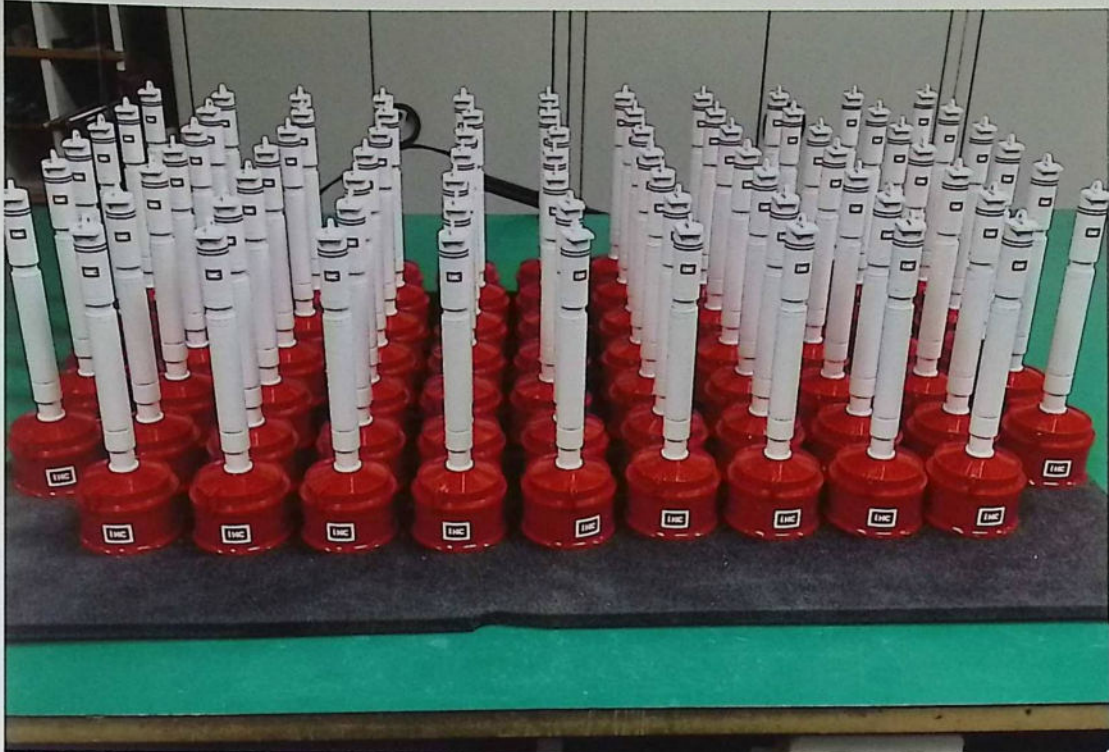
S 150
Frank's
1:5
245 cm
press (2200)
84 uur
12/5/2014



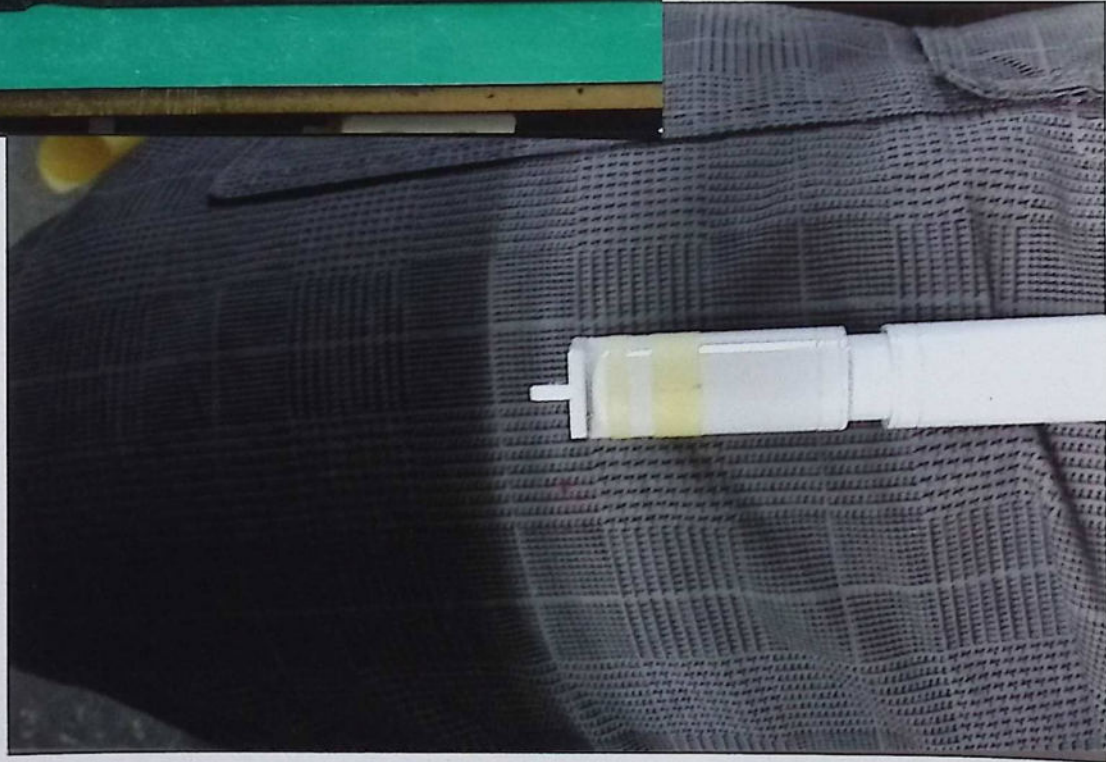




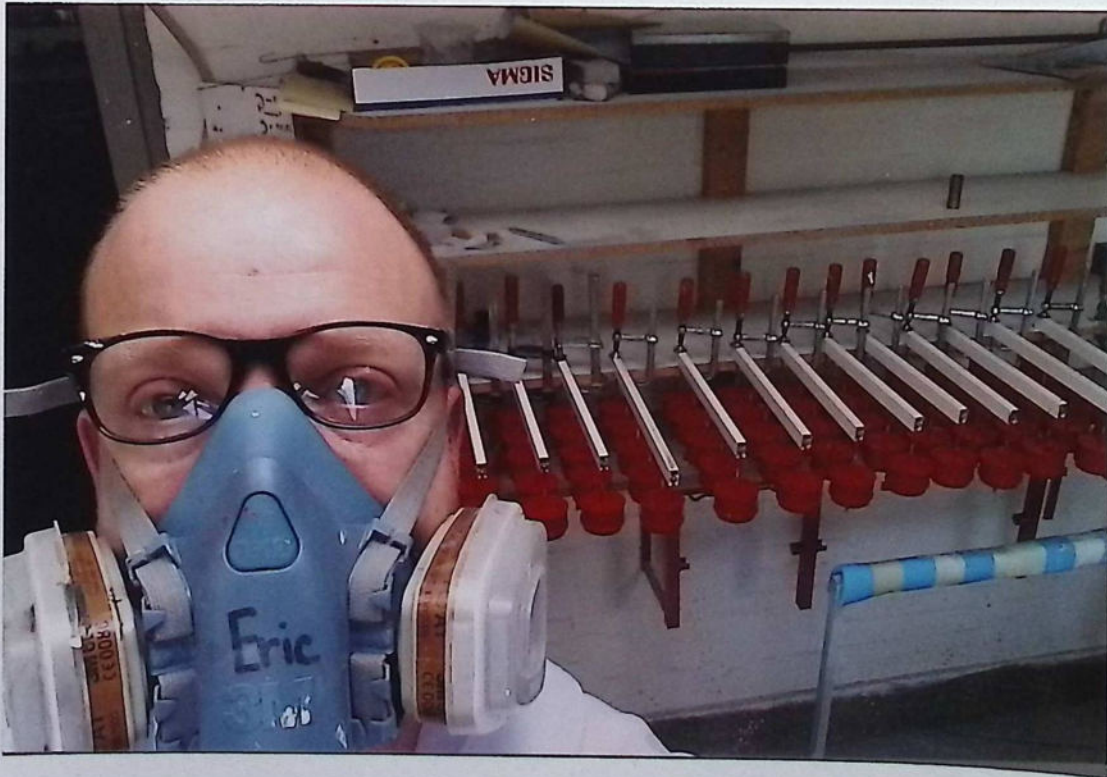




75 x \$2000
+ 6.1 Sleeve
Inal kosten 65 uur
+ 143 uur.
1:100
18/8/2014











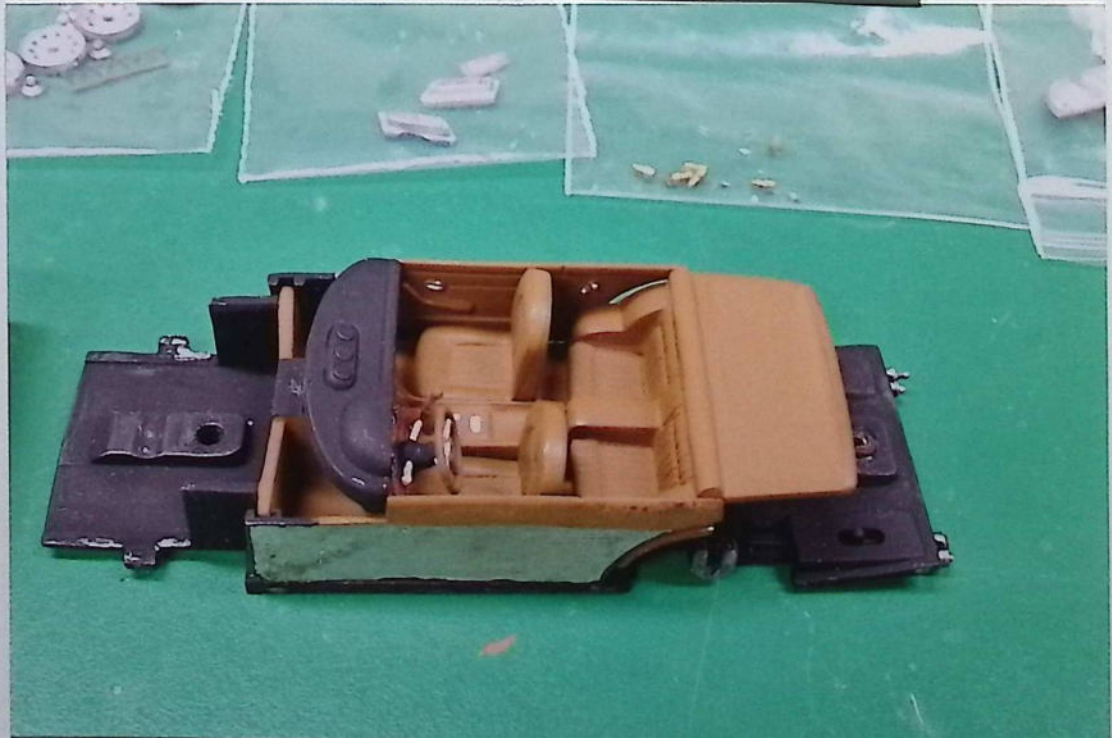


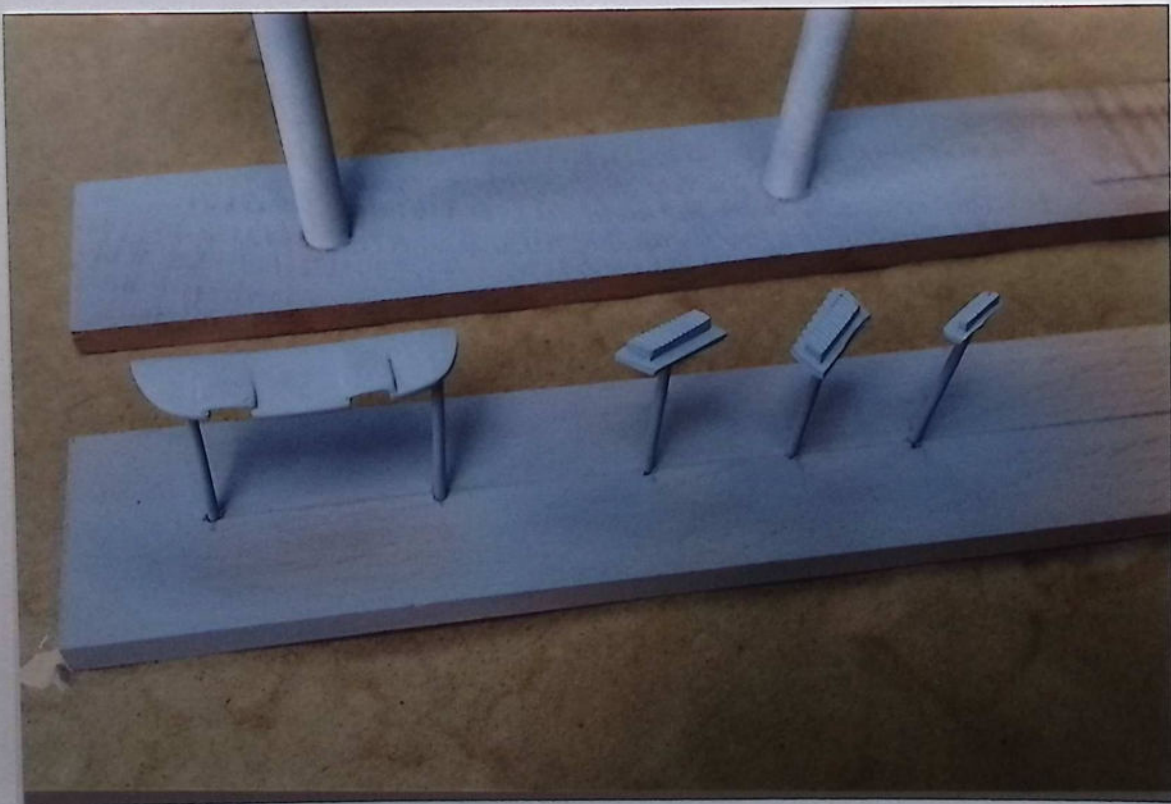


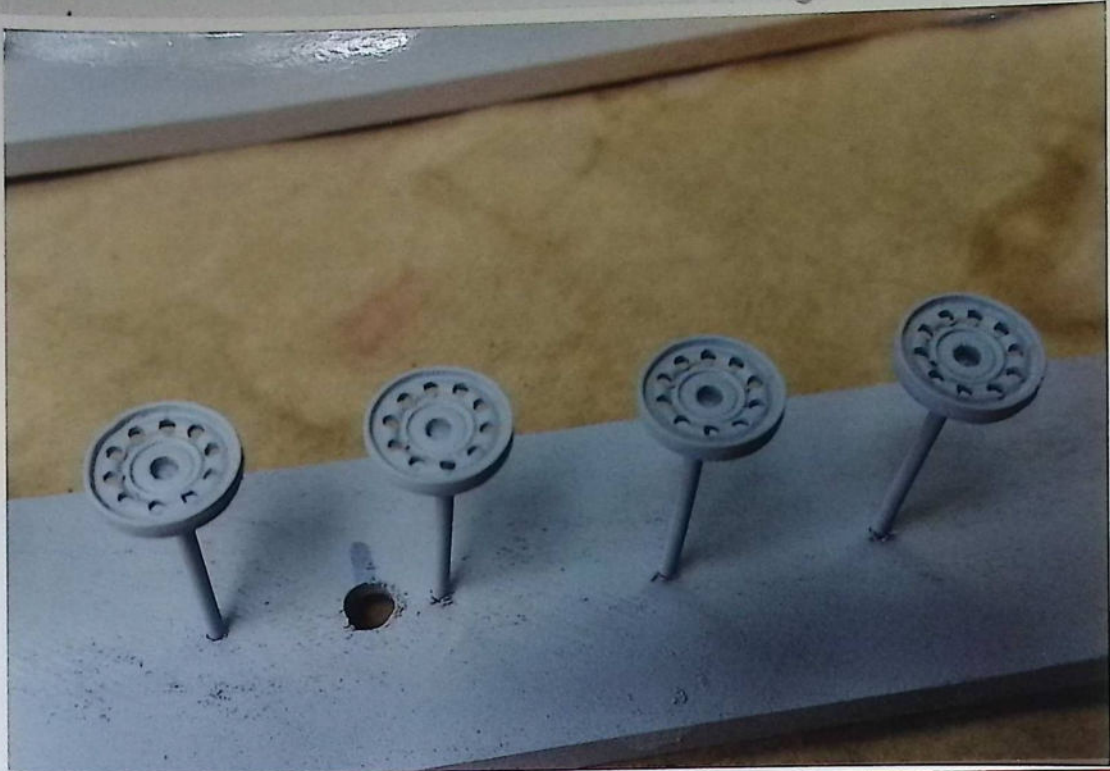
Ferrari
Henk d. Vries

DowdooS.

3-9-2014









HYDROHAMMER.

S 150

FRANK.

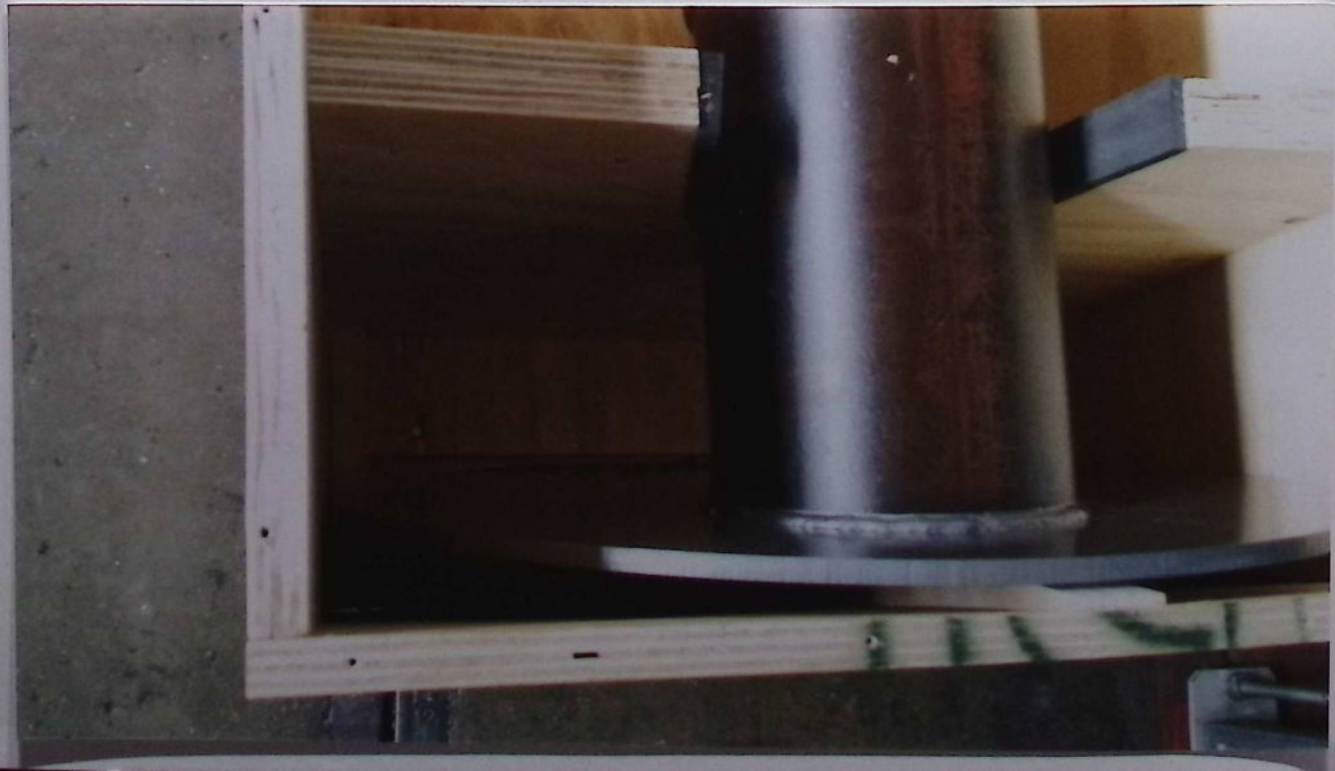
1:5

13-5-2014









Maquettes 4