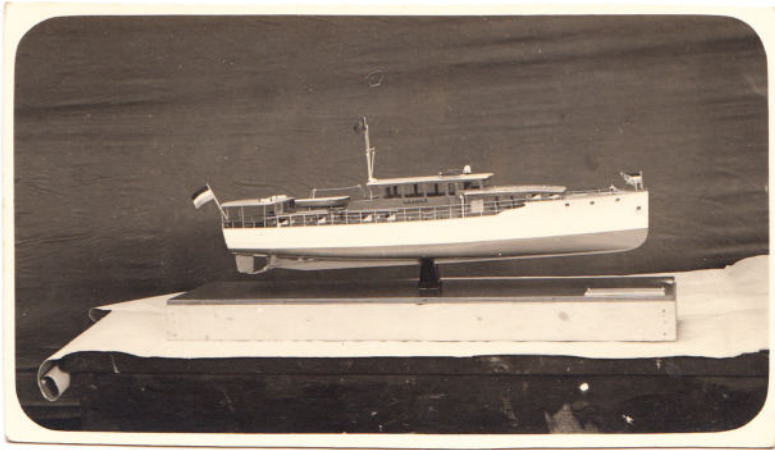
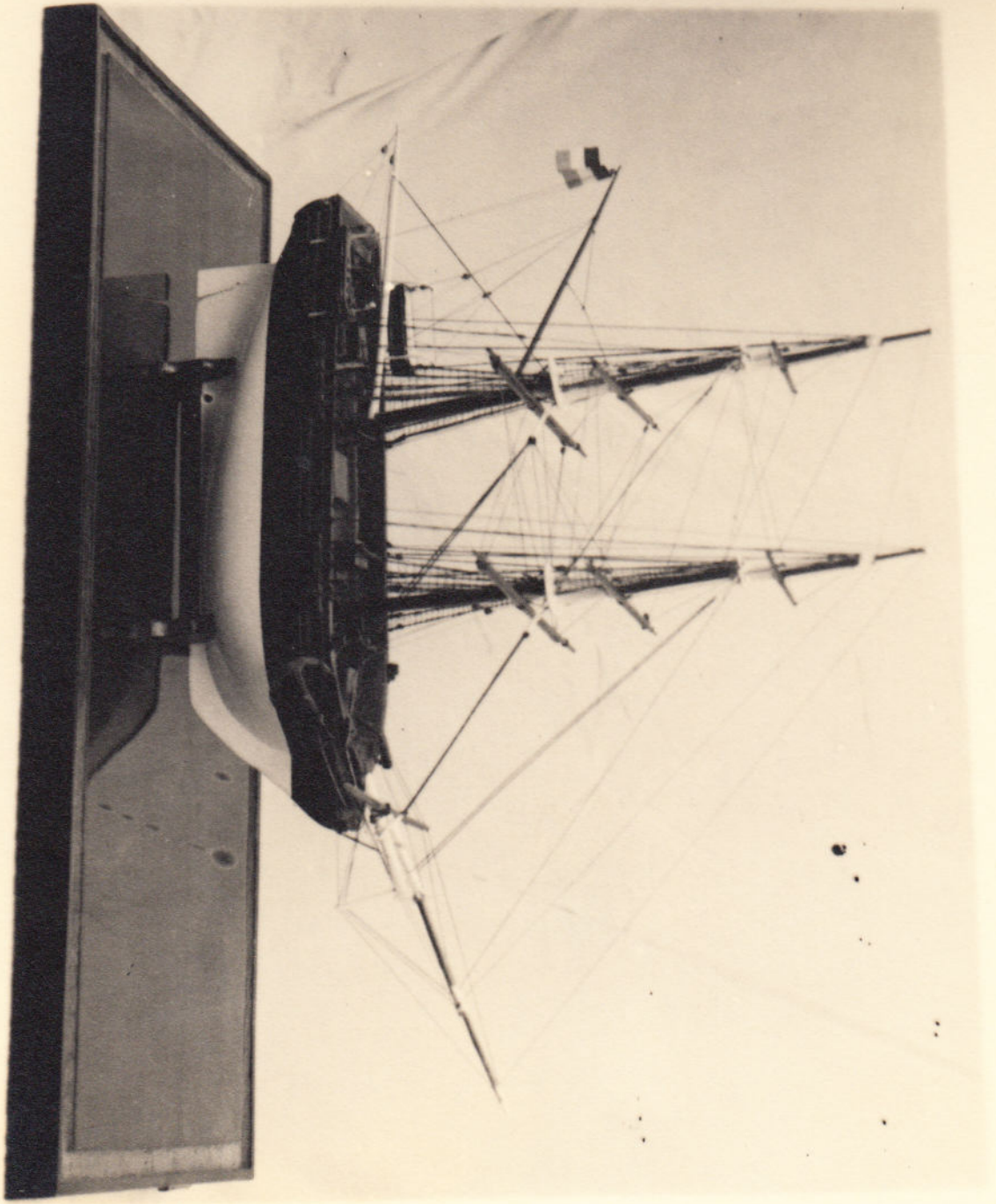




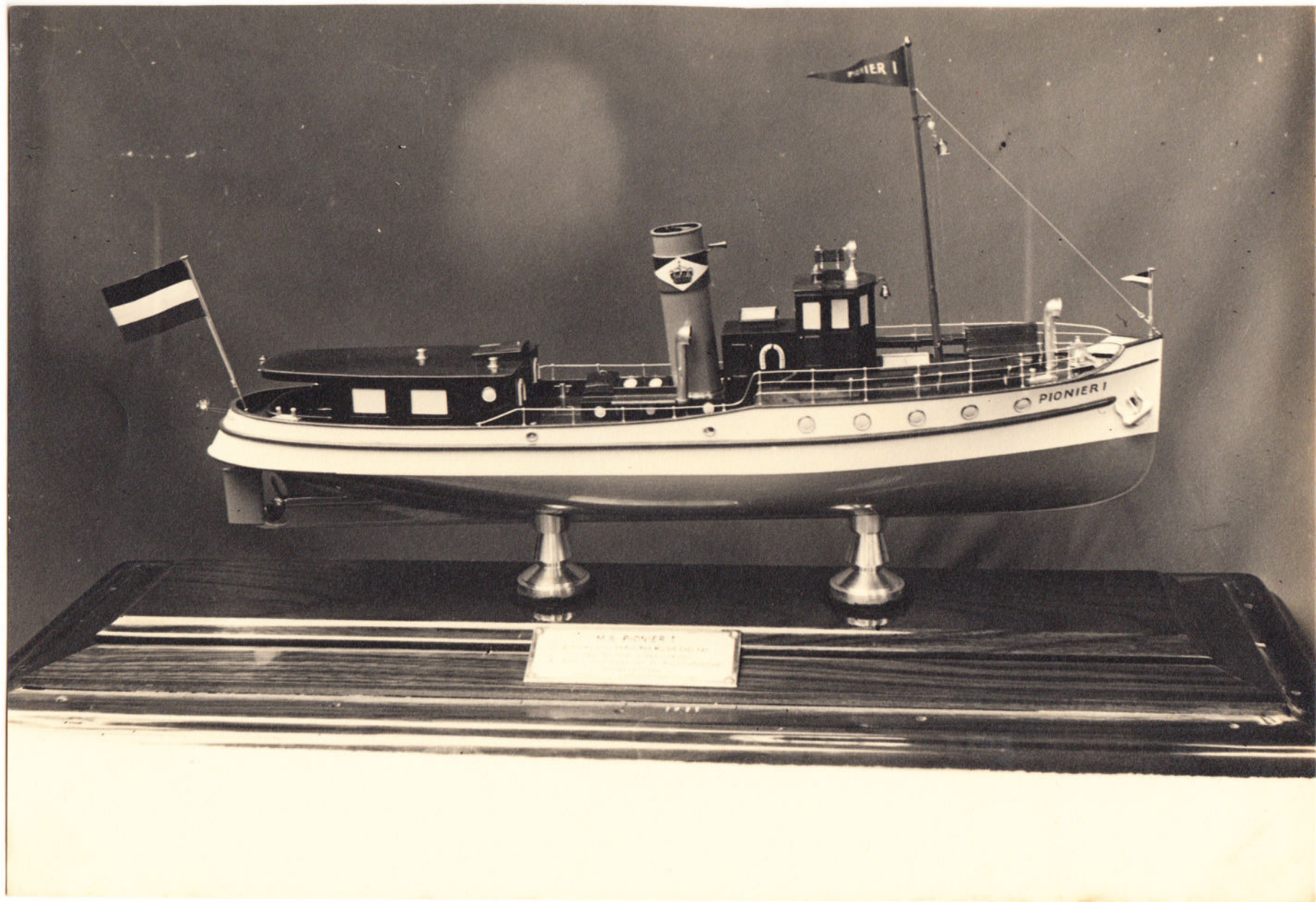
Ruys  
Sirocco  
1930







1931



M.S. PIONIER I  
BUILT IN 1880 BY THE ROYAL DANISH  
NAVY AND PURCHASED BY THE  
MUSEUM IN 1931









MEZIERTACHT "FETA"  
1:50  
1945





Vos  
1950?



← **ATALANTA** →  
Schiffst. 110  
Länge ca. 12,85 M. Breite 3,50 M.  
Länge w.l. 11,60 M. Diepgang 1,08 M.



1966  
1:30



ATALANTA  
Length O.A. 12.25 M  
Length W.L. 11.40 M  
Breadth 3.00 M  
Displacement 100 M



LRF

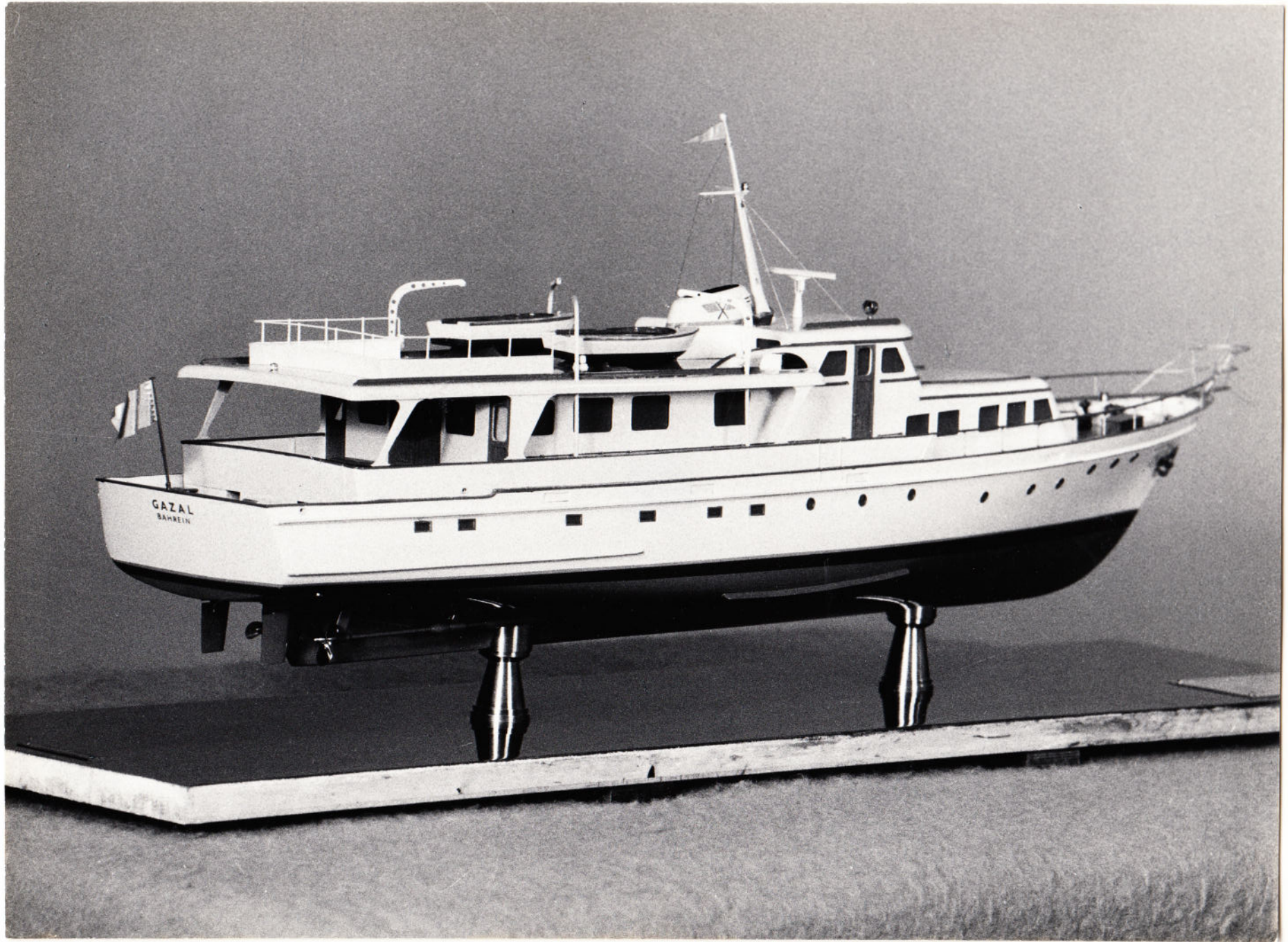
KRIMPERLEK

ATALANTA  
Lunghezza 11,50 m  
Larghezza 3,15 m  
Motores 150 CV  
Velocità 18 km/h



1962

1:40



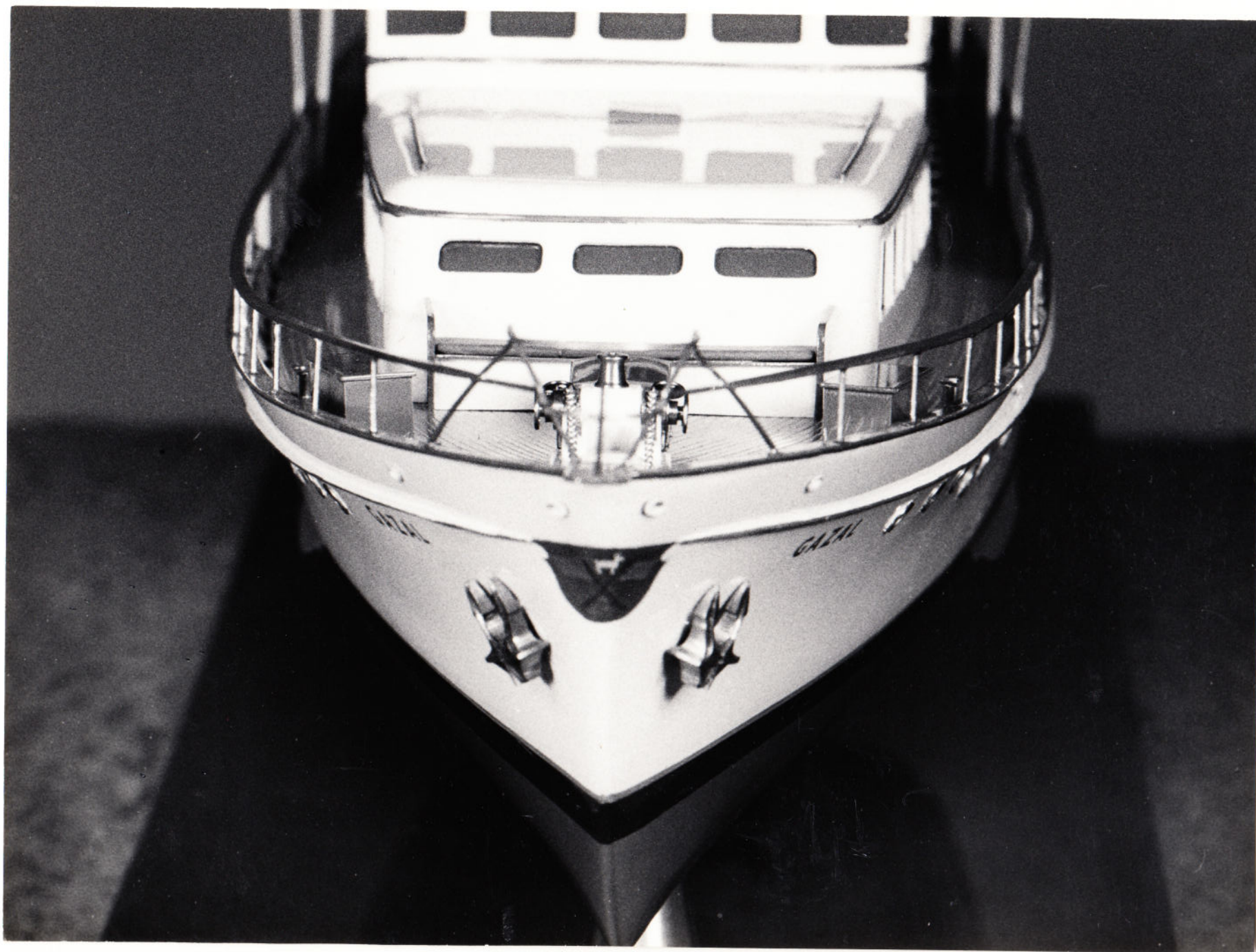


219

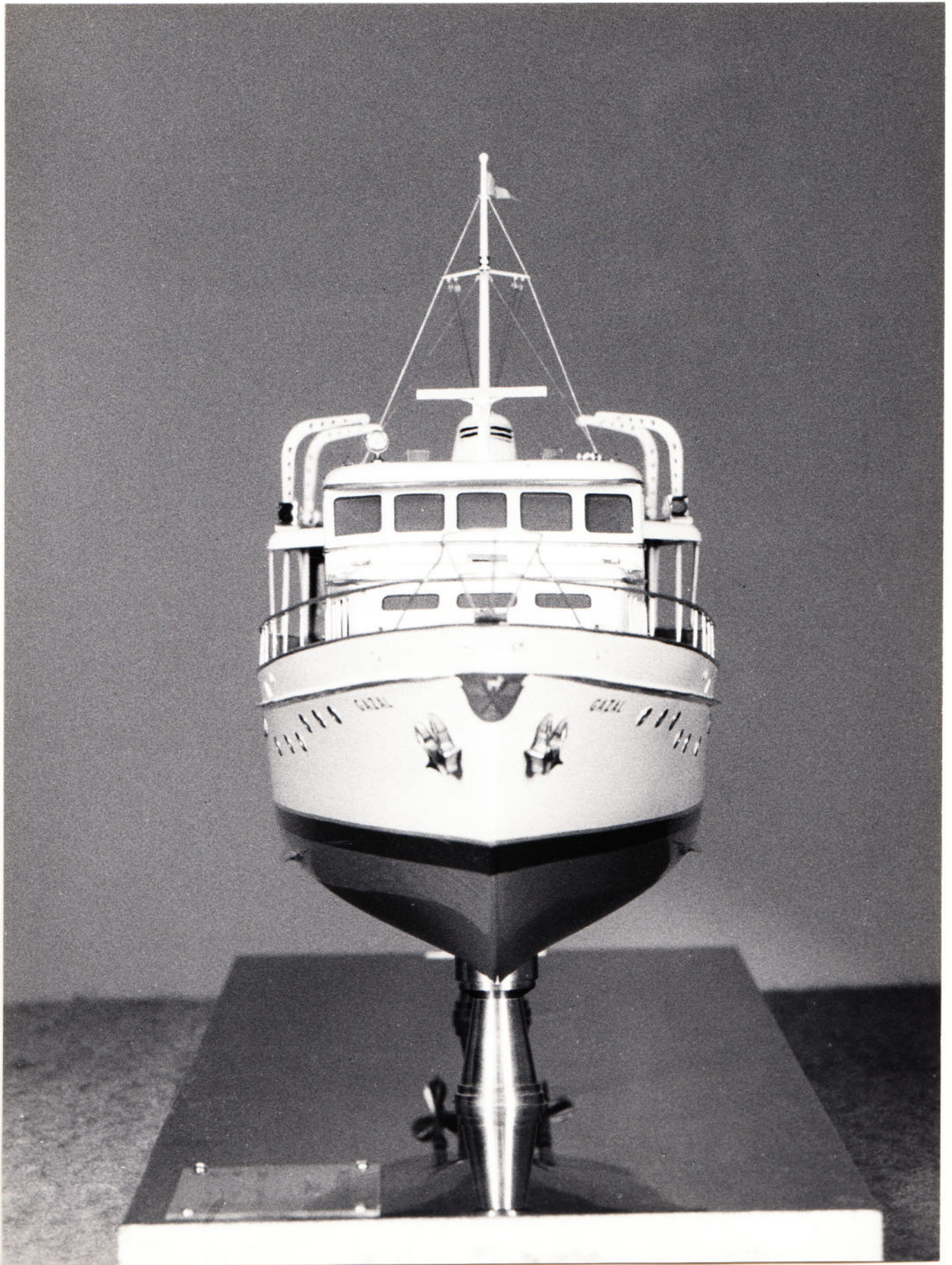
43mm













Atlantic

1962  
voyt  
1:50



U. S. STEEL INDUSTRIES  
CORPORATION  
PITTSBURGH, PA.  
1962



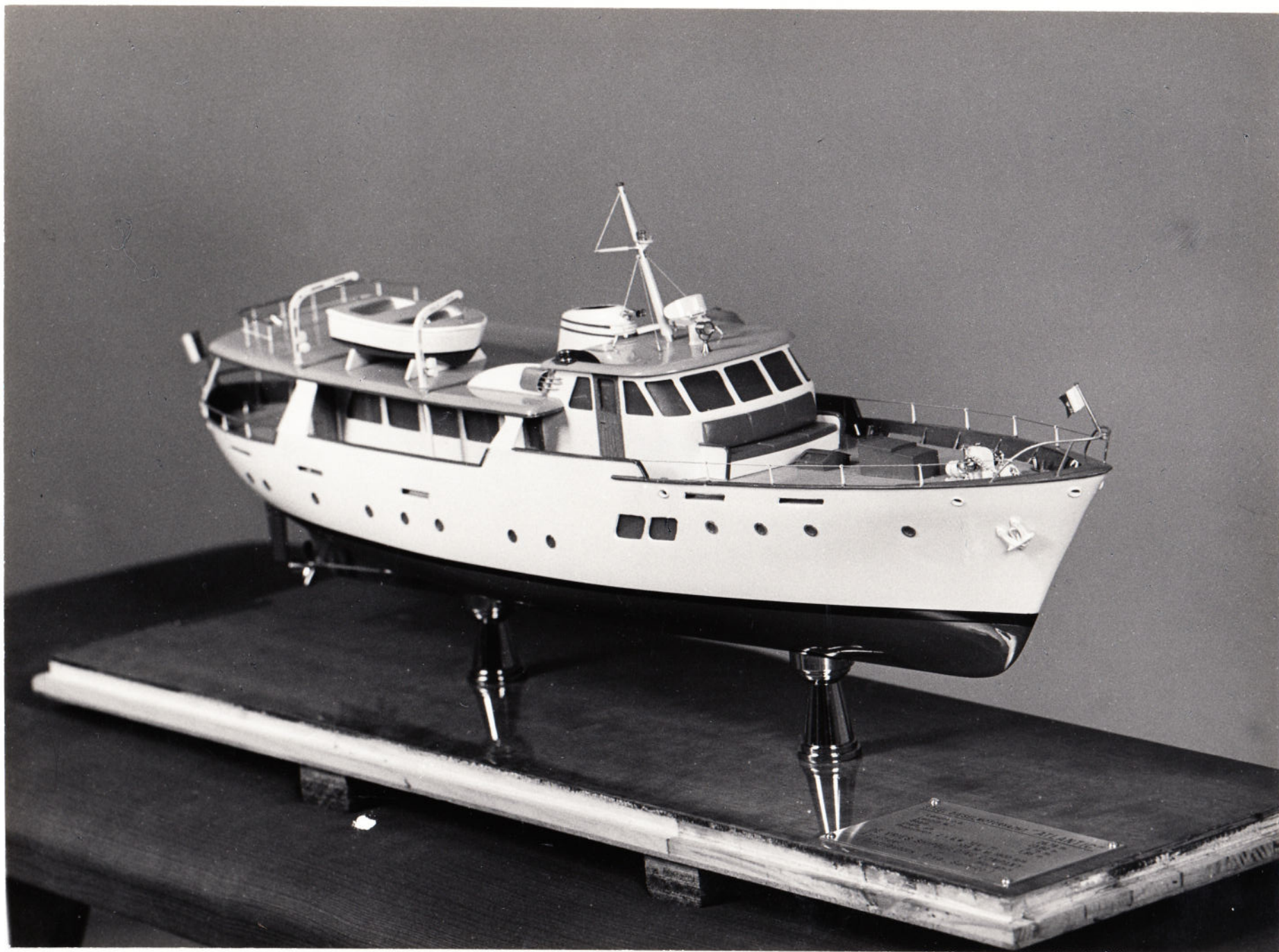
1963





Atlantic

1962









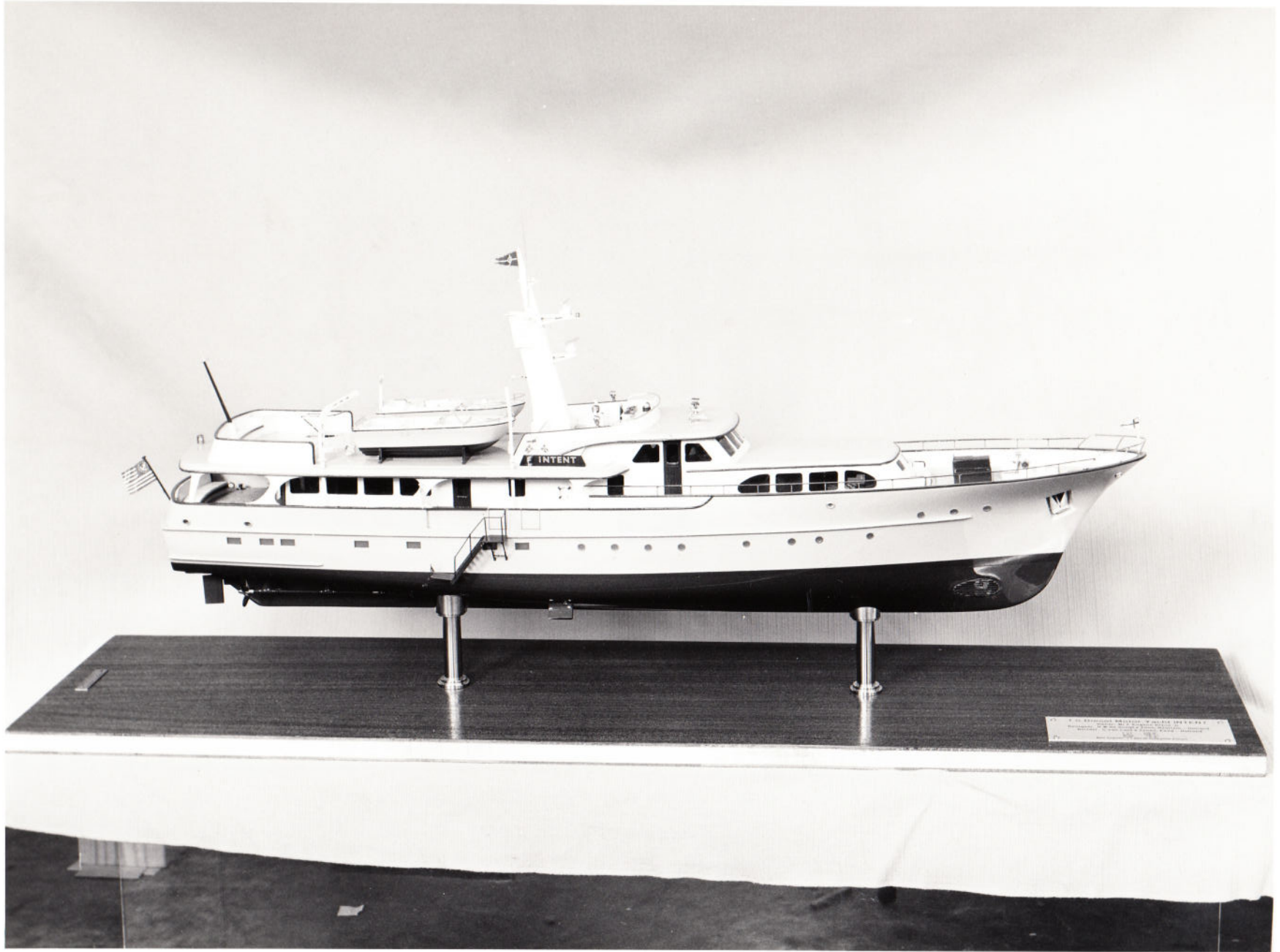




INTENT

1:50

1970







1965  
de Vries tentakel  
24 m.  
1:40





BLACK HAWK III

1:32

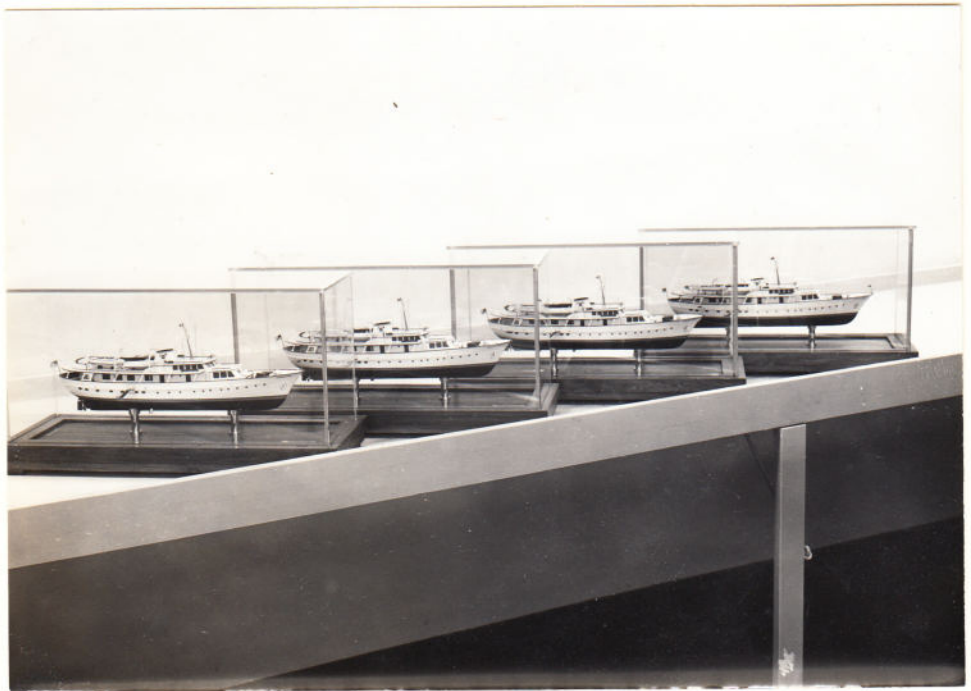
1965



1966

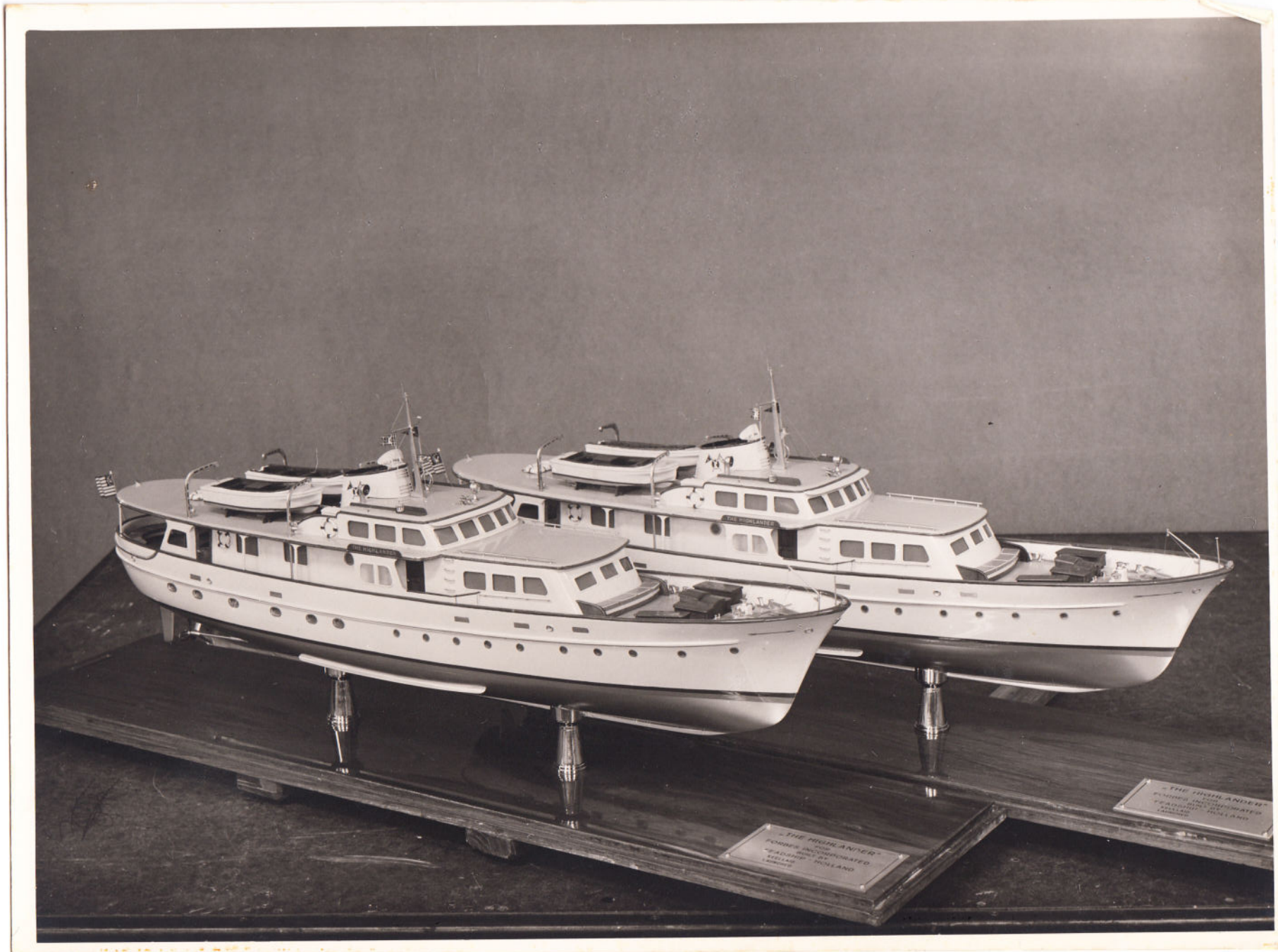
4x

THE HIGHLANDER





THE HIGHLANDER  
1956  
2x  
1840



THE HIGHLANDER  
FORMER INCORPORATED  
"HIGHLANDER"  
"HIGHLANDER"  
"HIGHLANDER"

THE HIGHLANDER  
FORMER INCORPORATED  
"HIGHLANDER"  
"HIGHLANDER"  
"HIGHLANDER"

± 1959

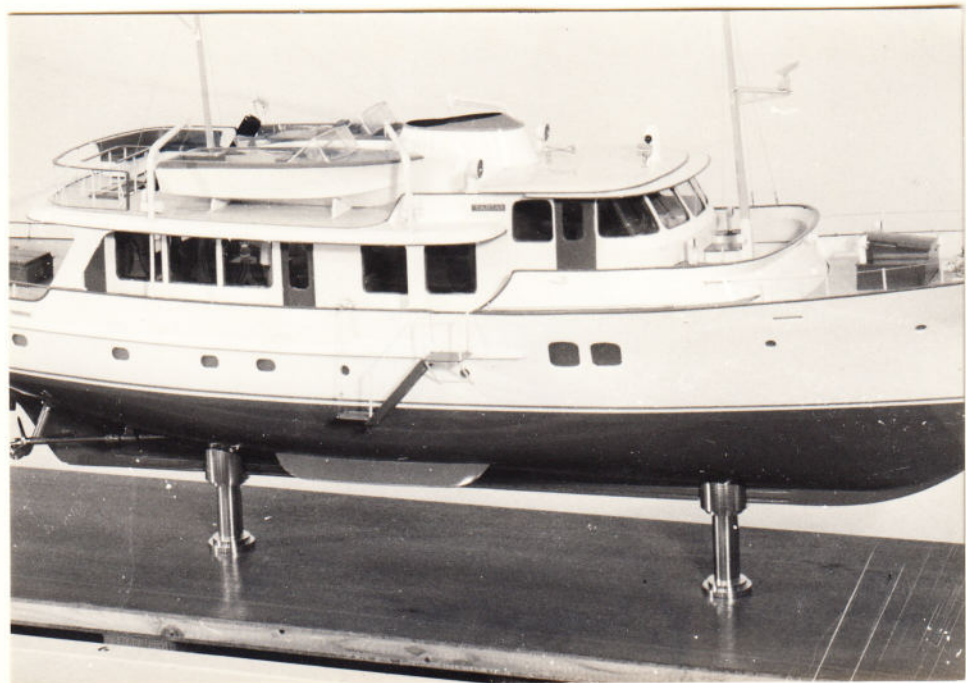
1414







TARTAR





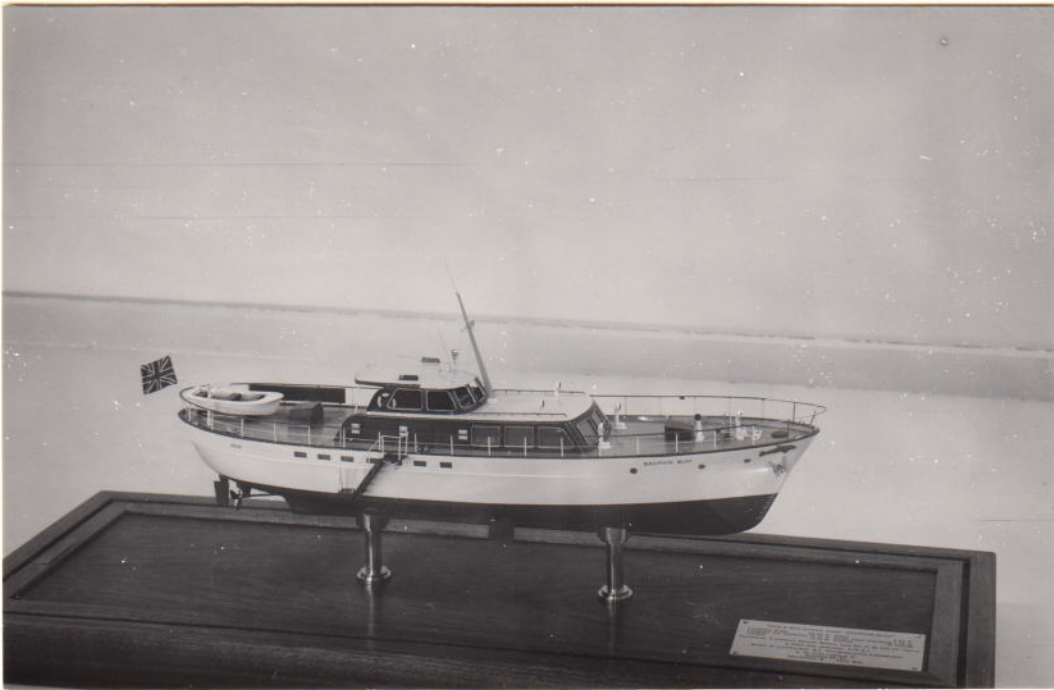
TARTAR

1:32

1967



DAUPHIN BLEU  
1968  
1:50



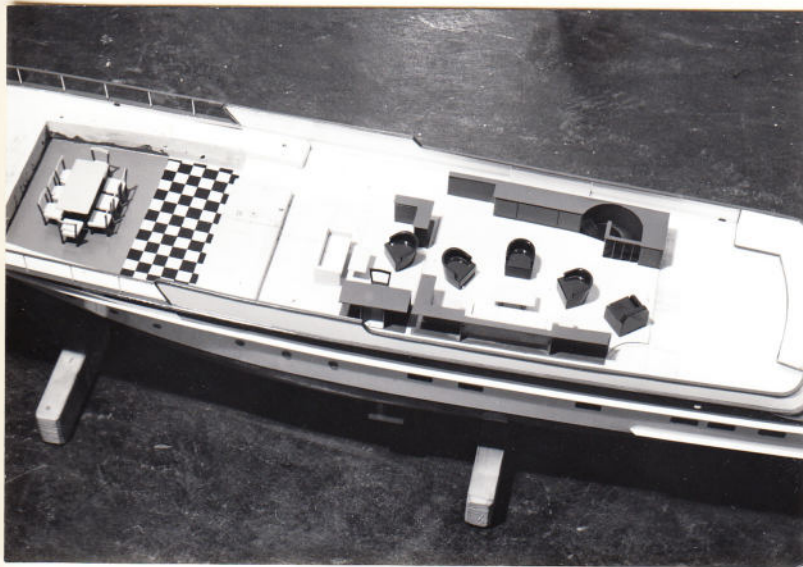


1:50  
1968



YACHT "DAUPHIN BLEU" 1968  
LUNGO 12,50 METRI  
LARGHEZZA 3,50 METRI  
POTENZA 20 CV  
ALBERGATA A LONDRA  
RUBENSON

PROSIT 1968





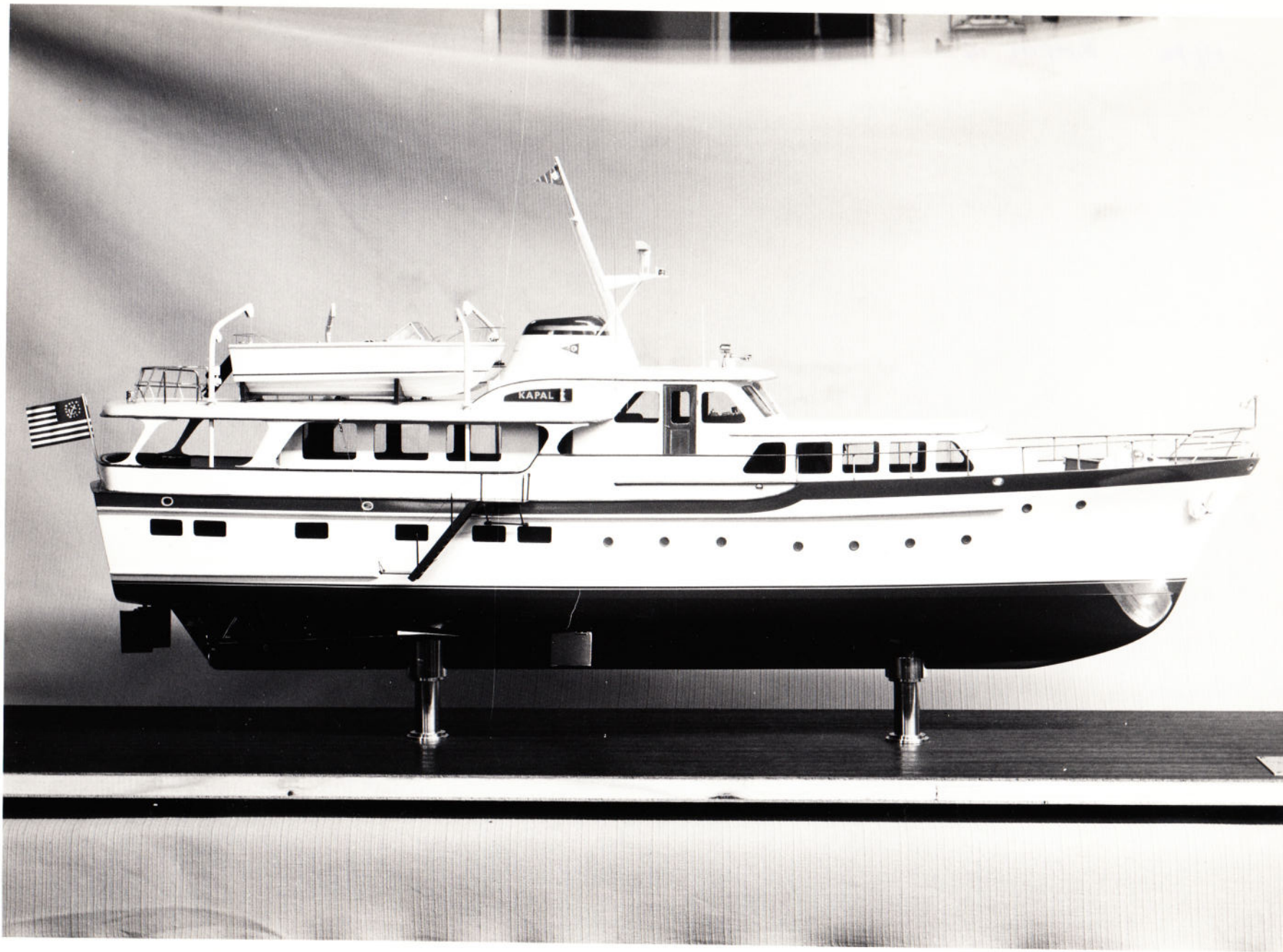
1:32  
1968



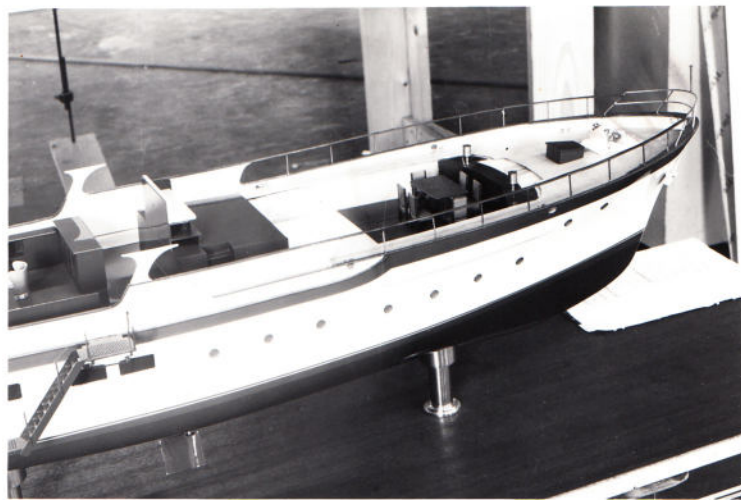
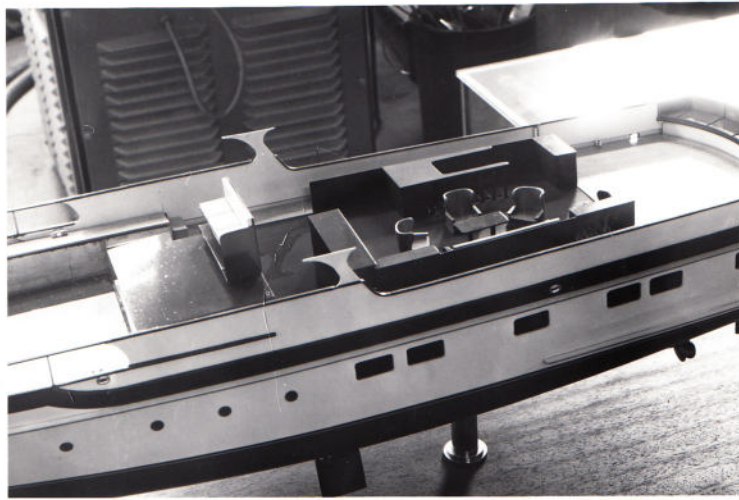
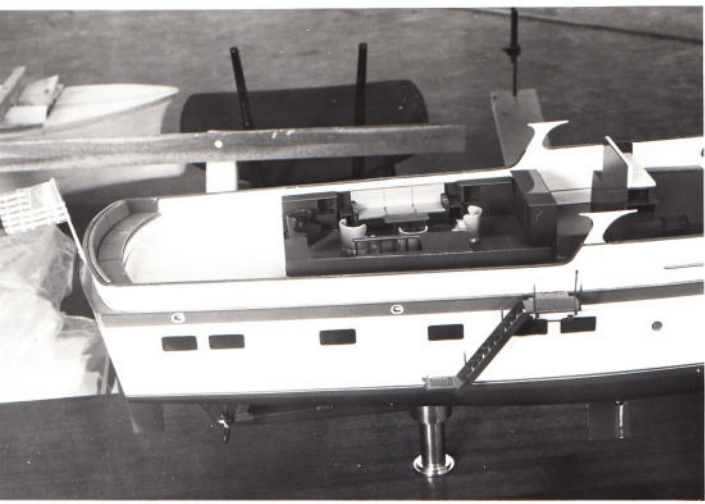
KAPAL IV

1970

1:32

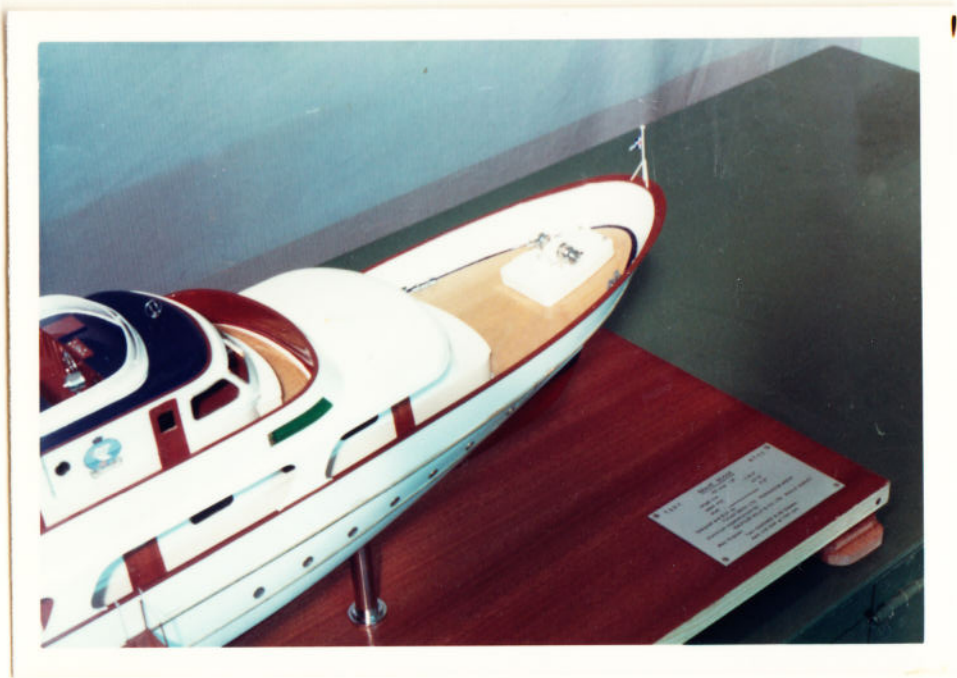












BRAVE GOOSE  
1971









210 uur.

" CHIMÈRE "

F. BAK 1:40

22-10-1976

voor E. FRECH.





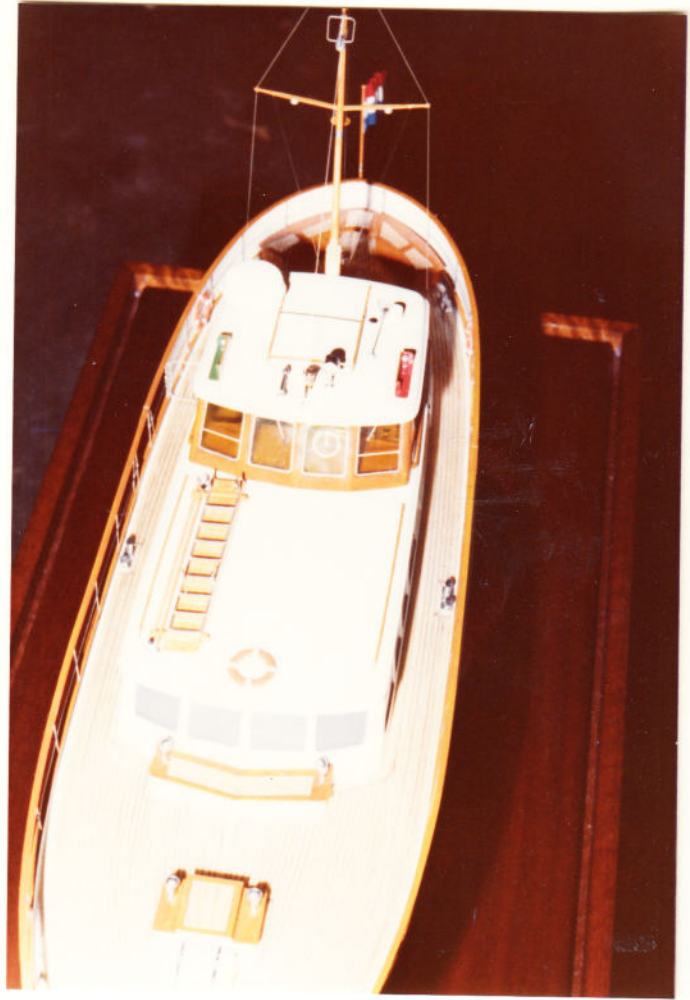






HANNO  
"GRIFFIOEN"  
SCHAAL 1:30  
364 mm.  
afgeleverd. 20/8/78







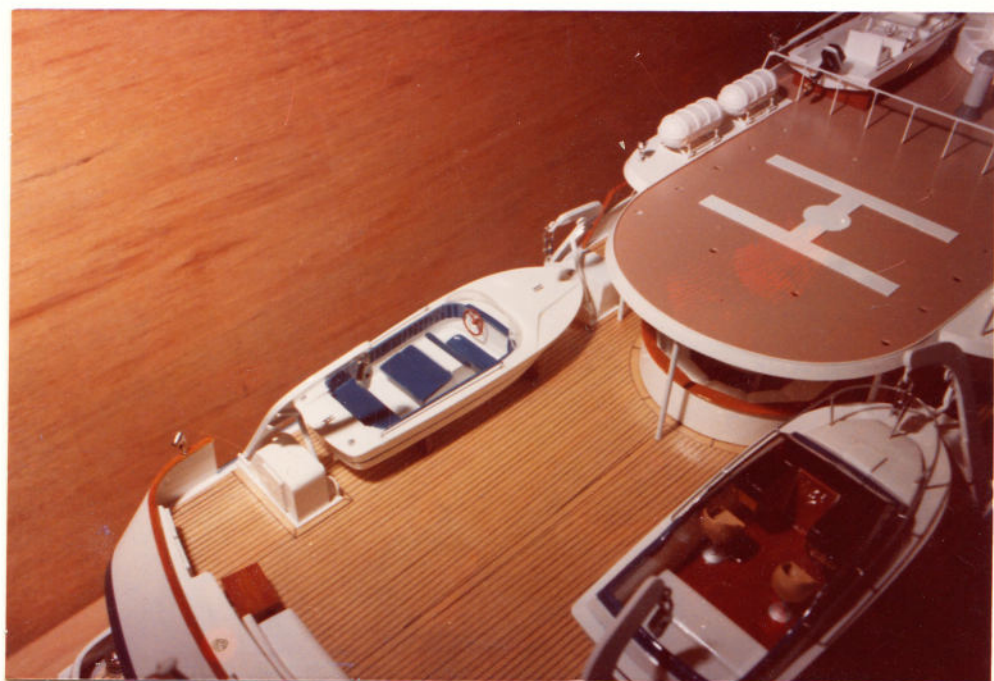




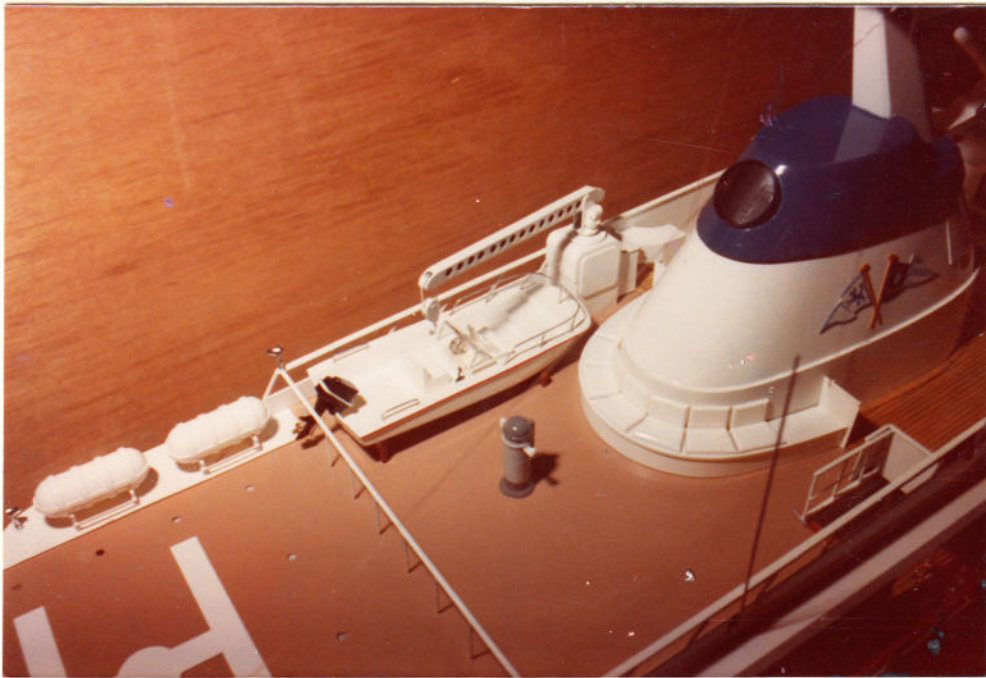
V. LENT  
P. JACHT DIANA II  
SCHAAL 1:50  
925 uur.  
af. 23/3/79  
ZIE OOK VOLGENDE JACHT











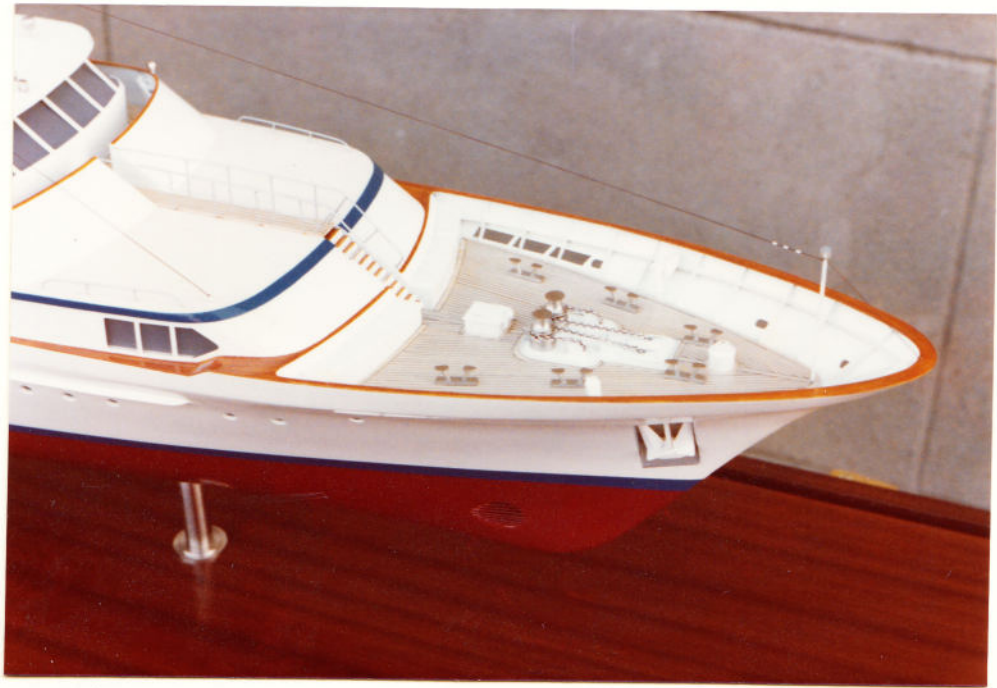


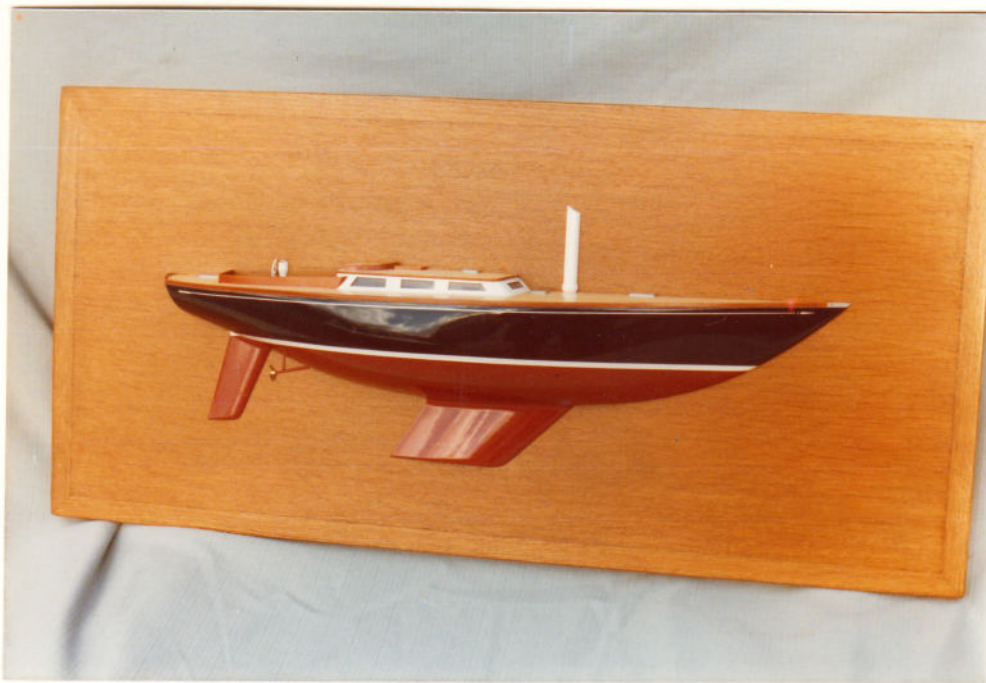


2<sup>e</sup> model VAN LENT  
DIANA II  
SCHAAL 1:50  
800 uur.  
afgel. 23/3 199.

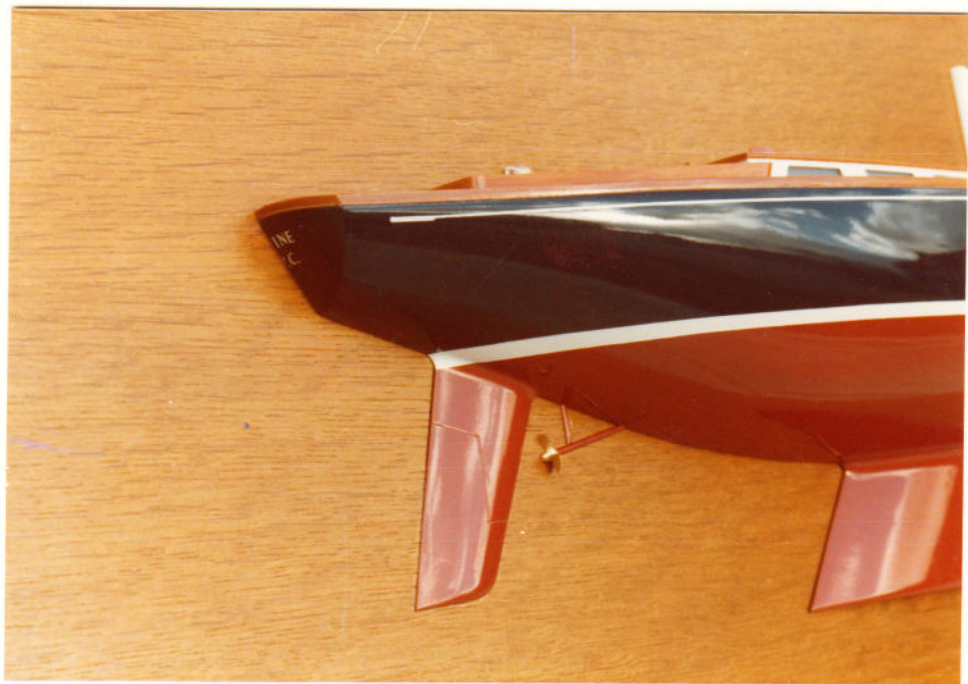








REIDEL  
13,5 m. facht.  
"REGINE"  
1/2 model.  
School 1:25  
83 1/4 uur  
afgel. 9/11/79









So bought.  
2x "The Highlander"  
1:80  
(ex Clay Pseth)

for 448 mar  
apl. 8/8/80













jacht Proele  
"BREEHORN"  
1:50  
196 uur.  
8/2/80











Yachtmodel: **ABERDON**  
Baujahr: 1972  
Länge: 1,20 m  
Bauart: RACING YACHT  
Bauart: RACING YACHT  
Länge: 1,20 m  
Bauart: RACING YACHT



De bogst.  
The Highlander  
(ex Clay Beth).  
1:40  
25/2/82  
570 mm.













" PIET HEIN "

BOS KALIS STICHTING " P H "

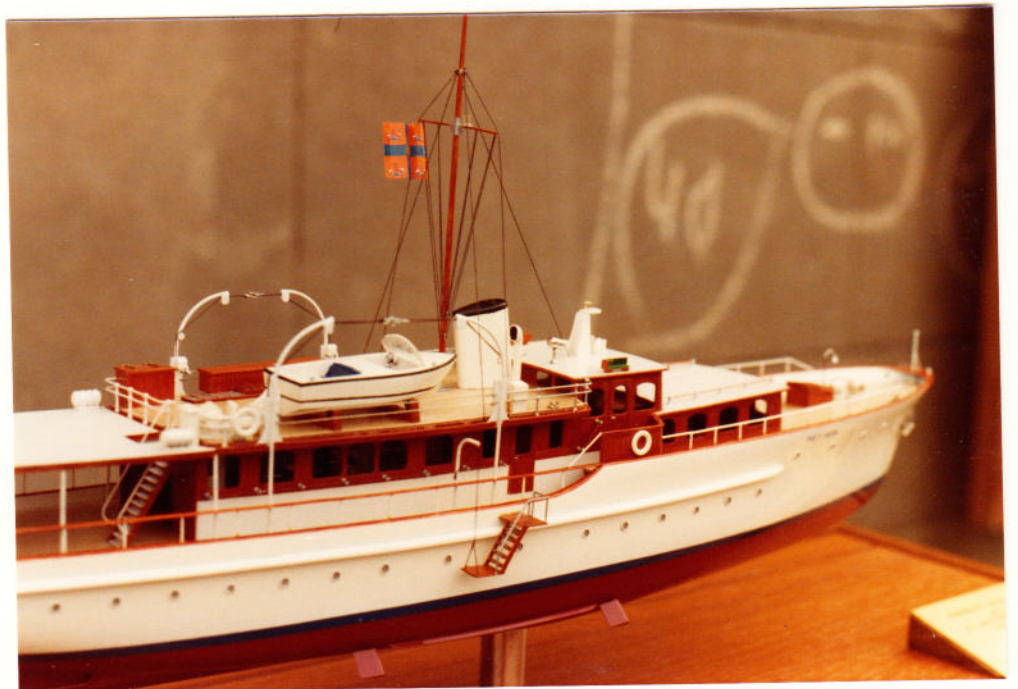
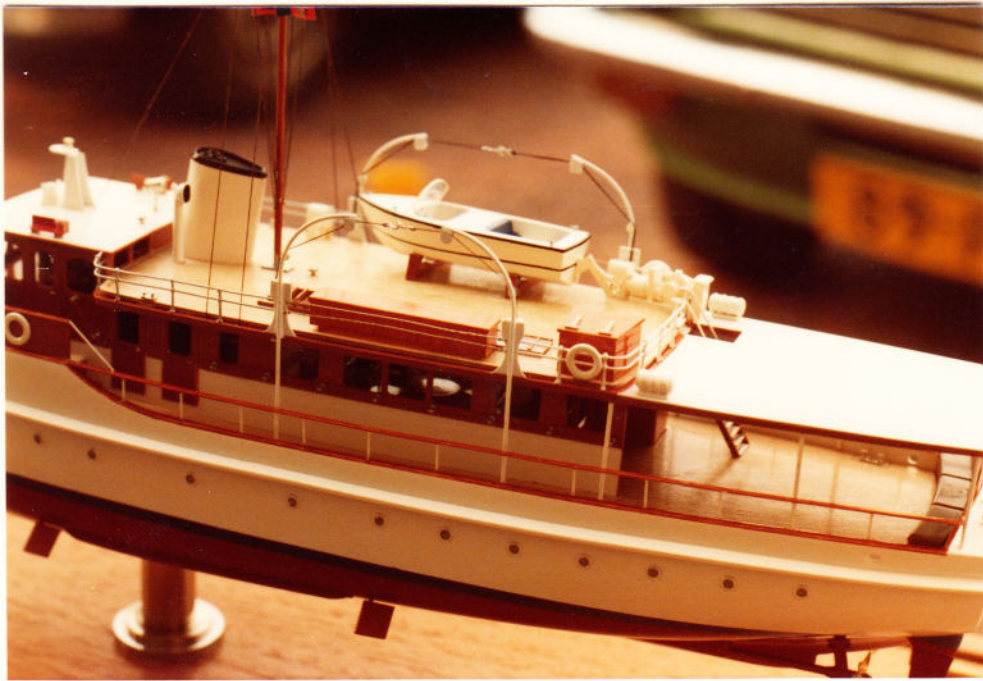
1:75

24/6/81

24/ uur.















BLUE OCEAN

90"

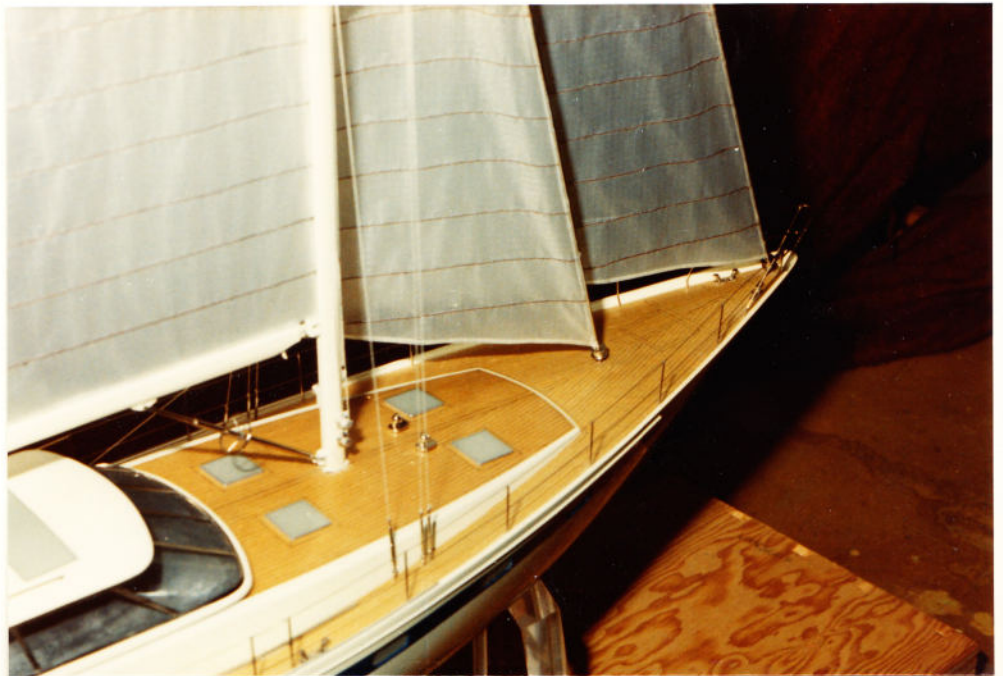
School 1: 33 1/3 als alg. plan.

164 cur.

15/10/82



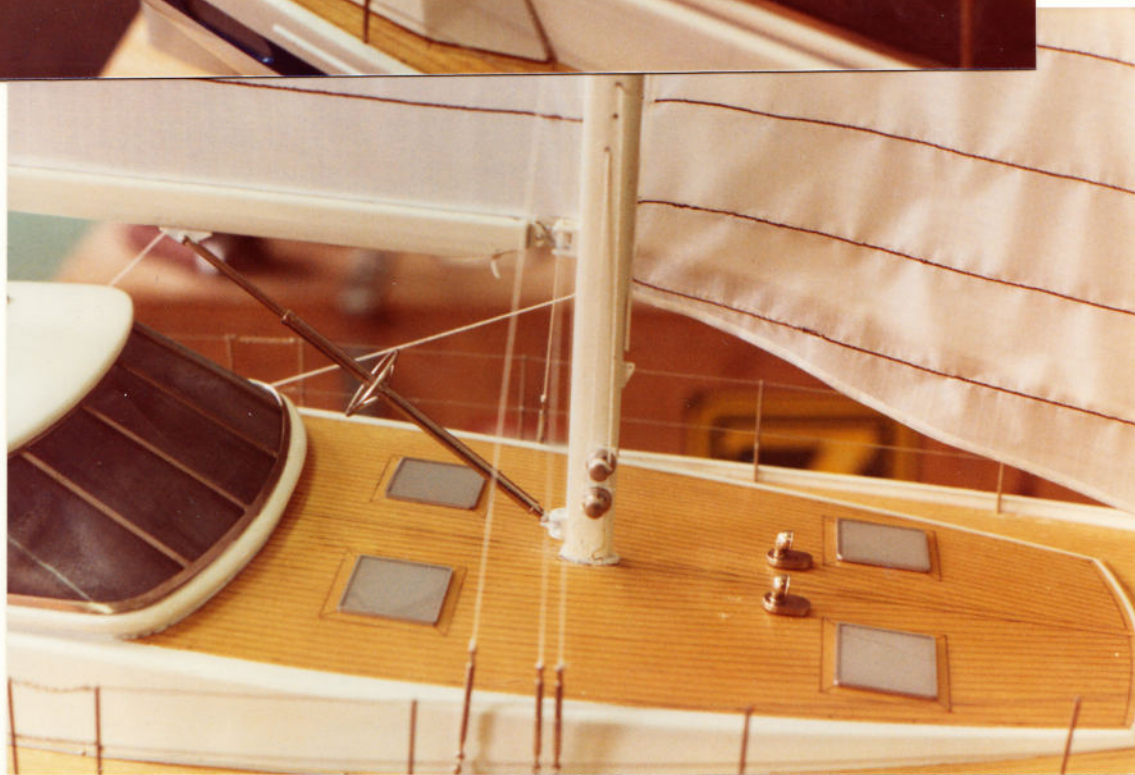
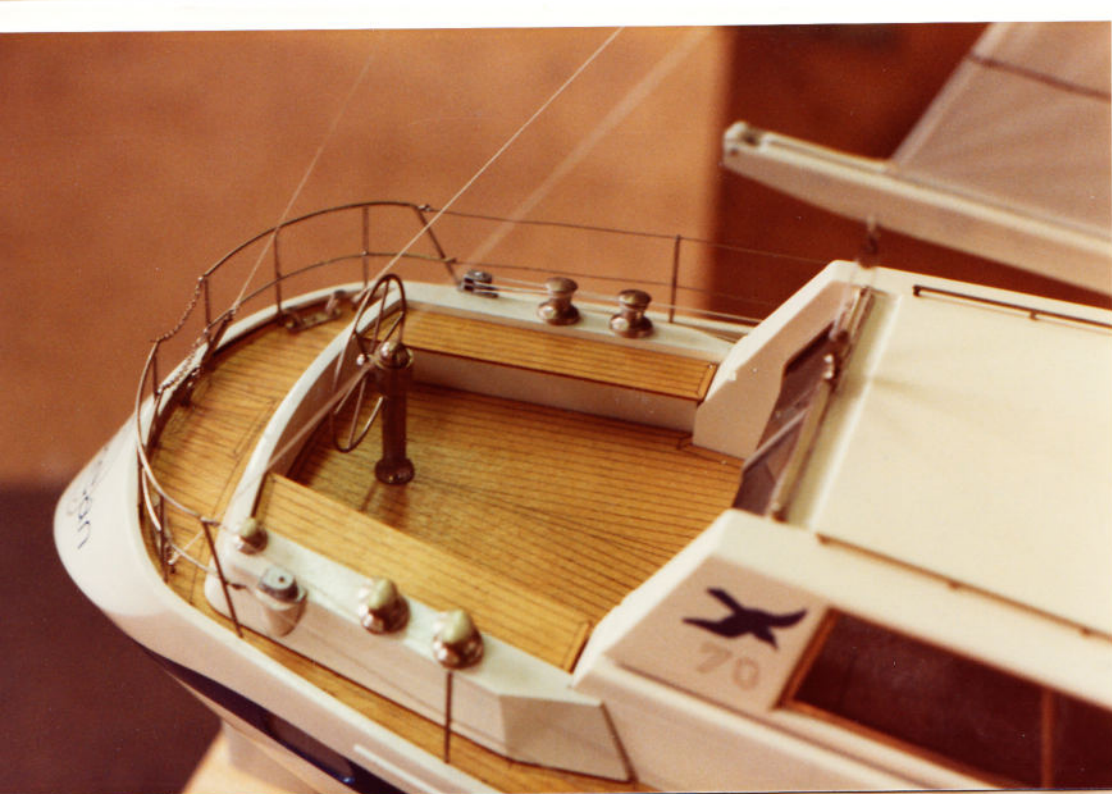




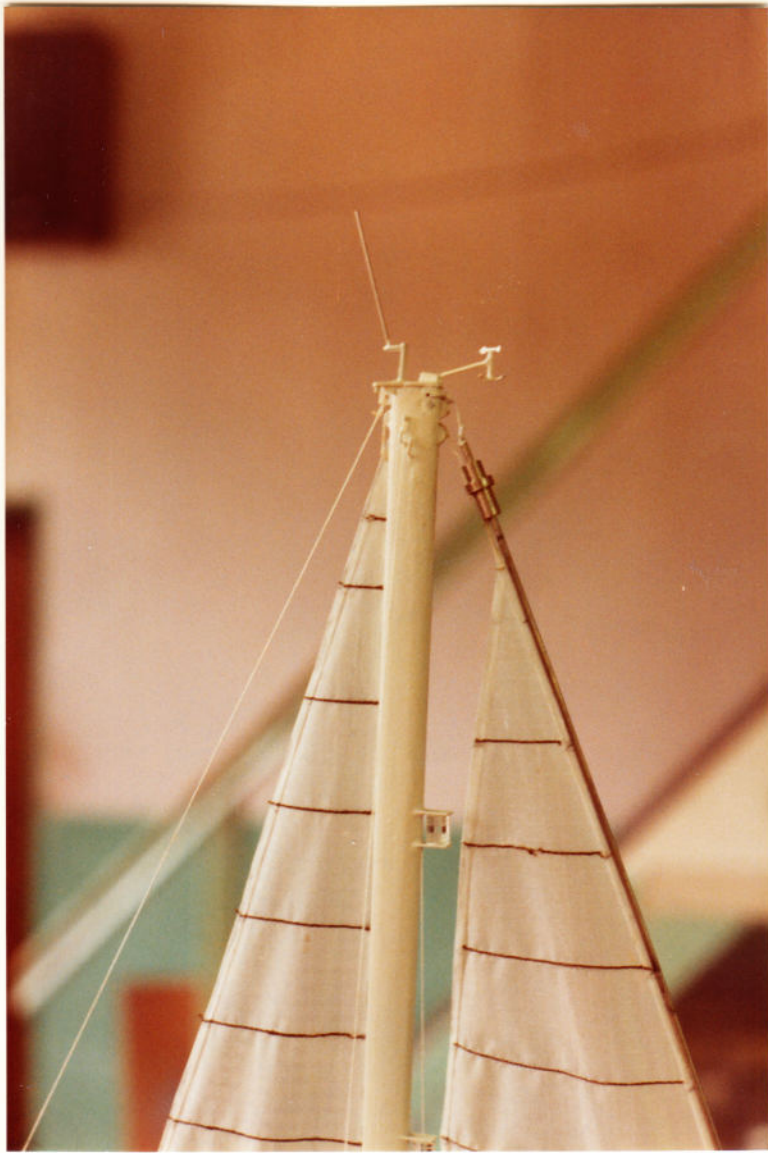














SE 00097

"NARA"

1:50

12-3-83

691 var.



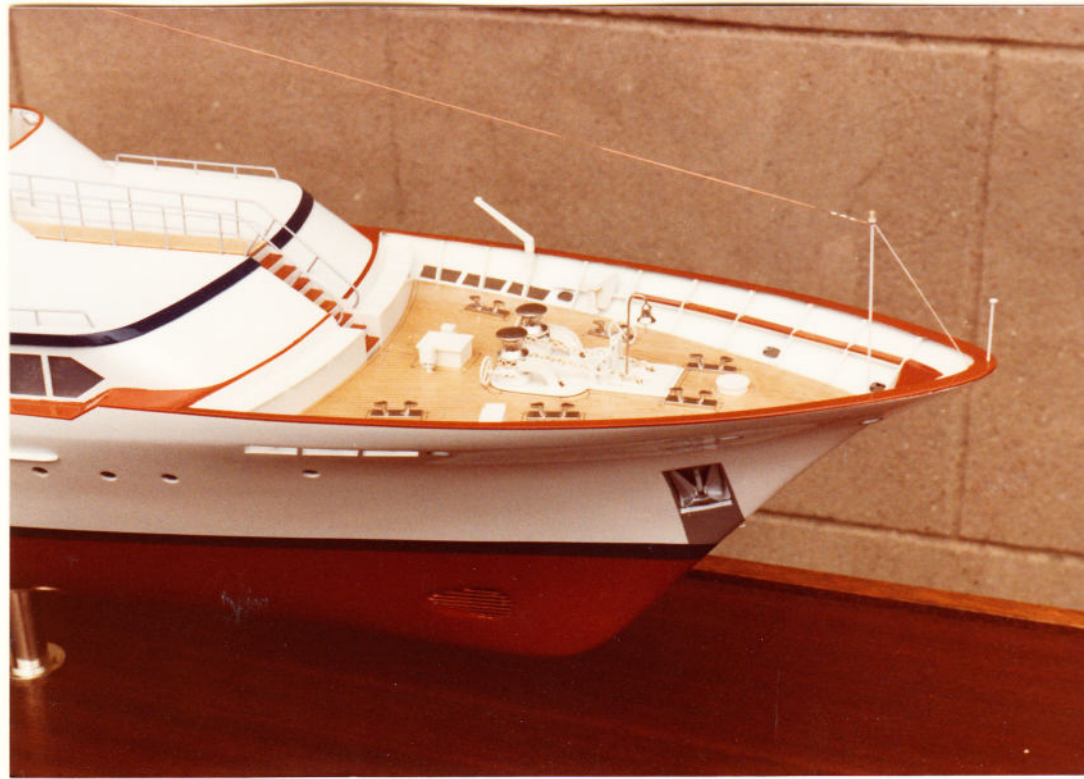
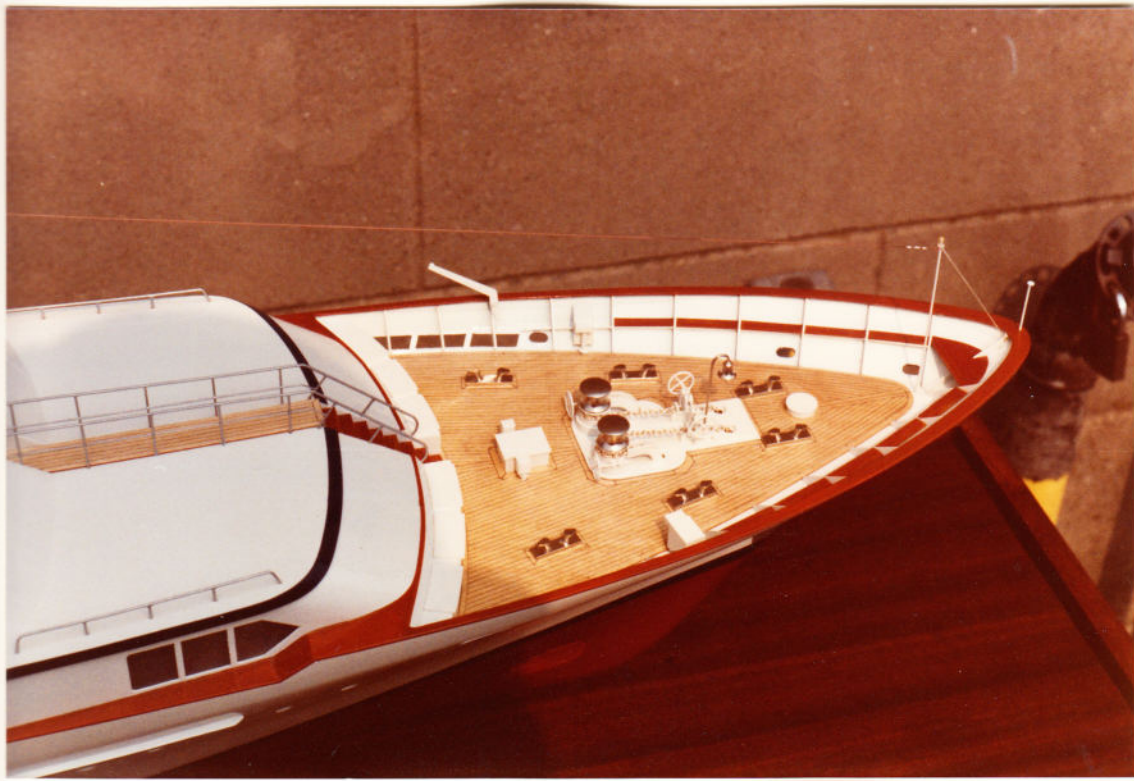
















TWIN SCREW DIESEL MOTOR YACHT  
"NARA"  
Length overall 40.00 m  
Beam molded 5.75 m  
Draft 3.28 m  
Displacement 150 tons  
Design: P.W. DE VROET & ZONN, Haarlem, Holland  
Builder: C. VAN LINT & ZONN, Amag, Holland













Yardnummer: 125  
Max. passagiers: 125  
Lengte: 12,5 m  
Breedte: 2,5 m  
Diepte: 1,25 m  
Snelheid: 12 kn  
Bouwjaar: 1912  
Bouwplaats: Rotterdam

Bouwjaar: 1912  
Bouwplaats: Rotterdam

Neel Lloyd. Underline Mr. Roys  
1:30 school 26 2/2 mt. 3/5/18



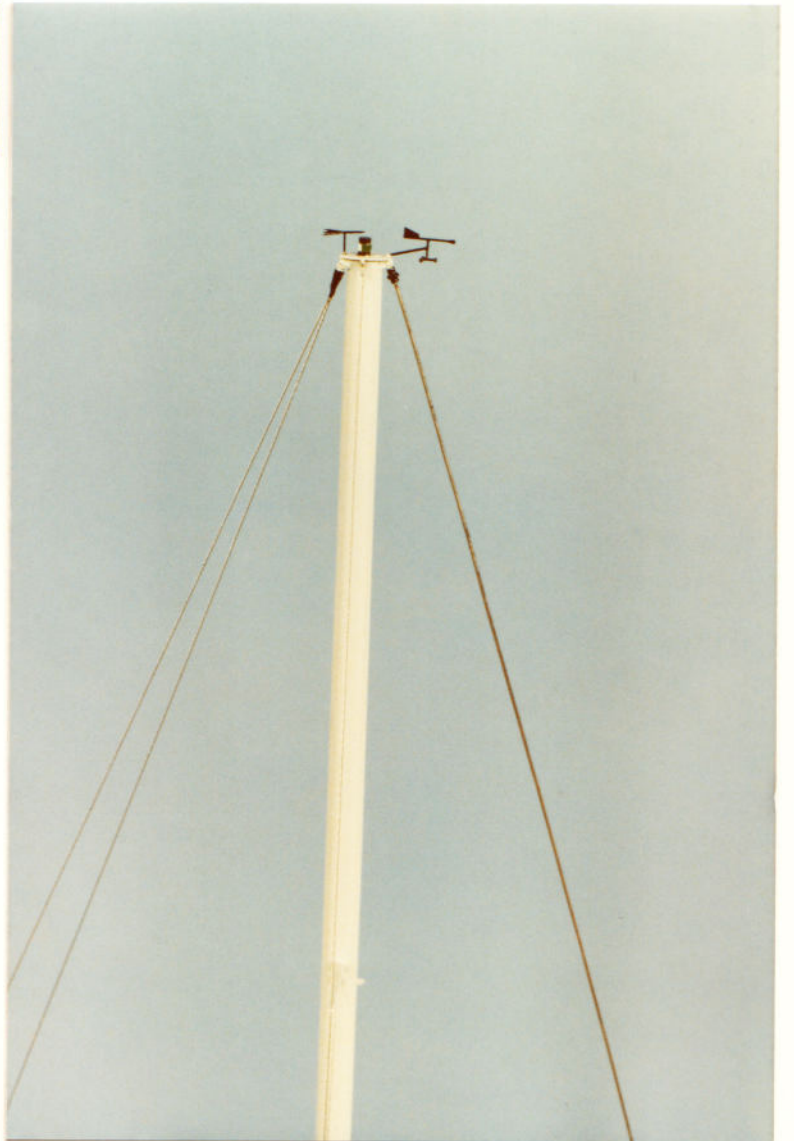
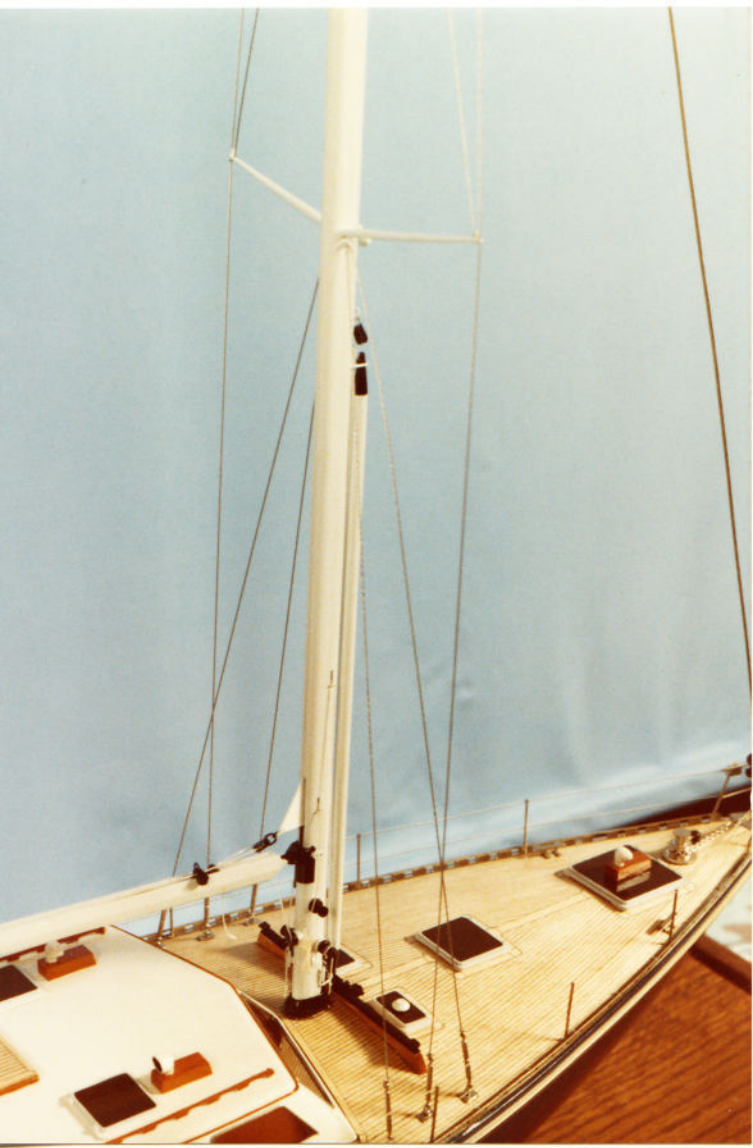














Aangeboden ter gelegenheid van het afscheid van  
dhr. J. E. RUTS  
30 mei 1985  
Knoedde...



Aangeboden ter gelegenheid van het afscheid van  
dhr. J. E. RUTS  
30 mei 1985  
Knoedde...



The Highlander  
ex CORVET - CORVETTE  
1:40  
225 wtr. 22 1/2 / 35



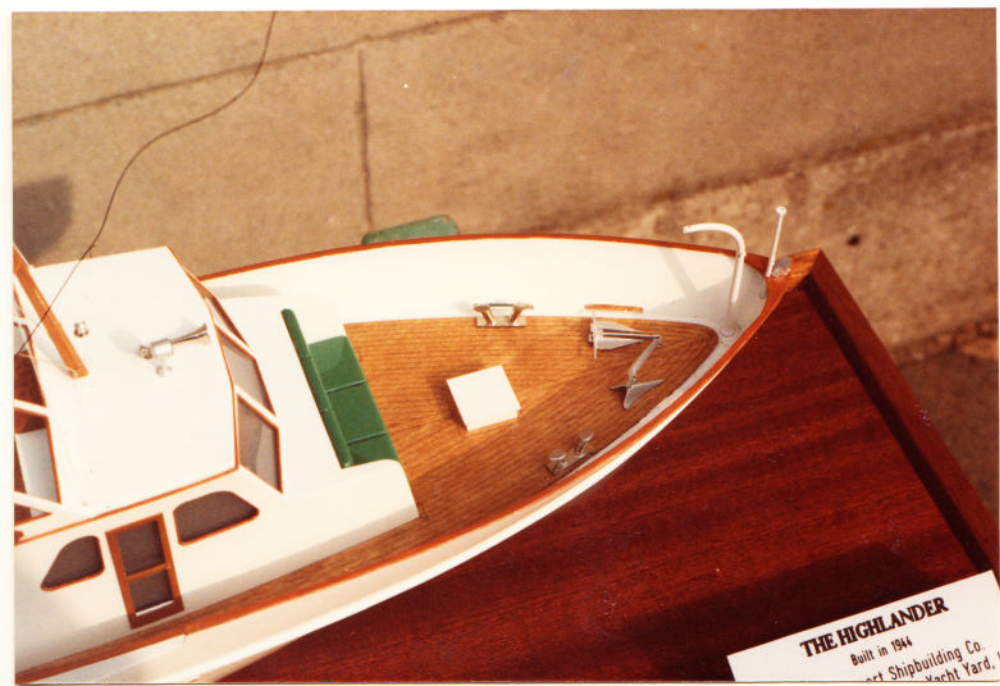
THE HIGHLANDER  
Built in 1914  
Designer  
Builder  
Fremont Shipbuilding Co.  
Society Marine Yacht Yards, Inc.  
New York, N.Y.  
12 ft  
18 ft  
12 ft











THE HIGHLANDER de Voigt.

JOHN BANNERBERG 1:40

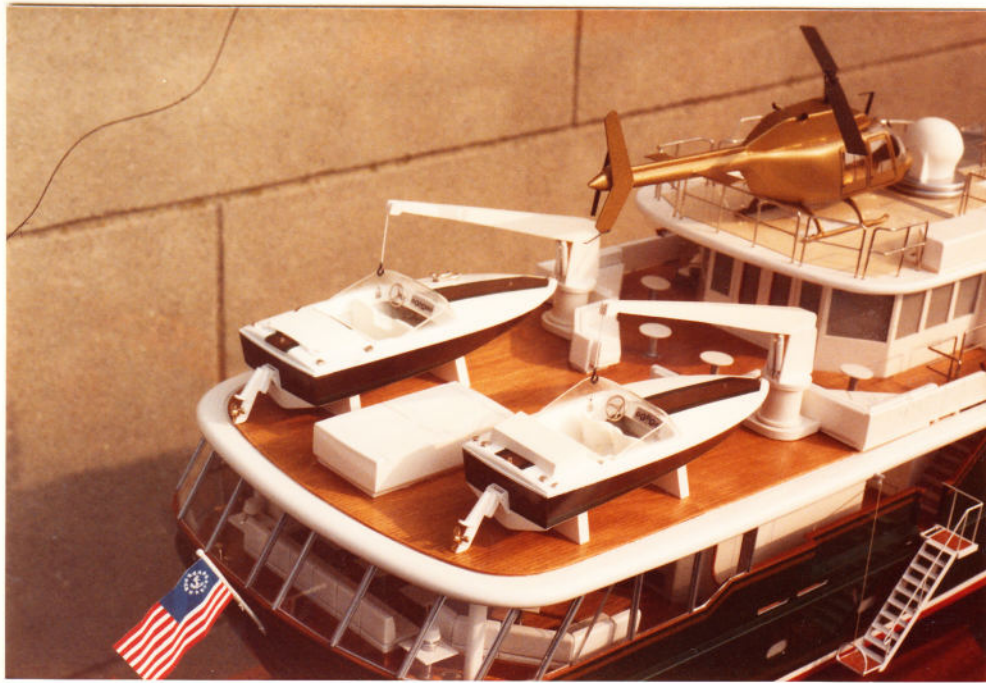
685 mm. 2 1/2 / 85







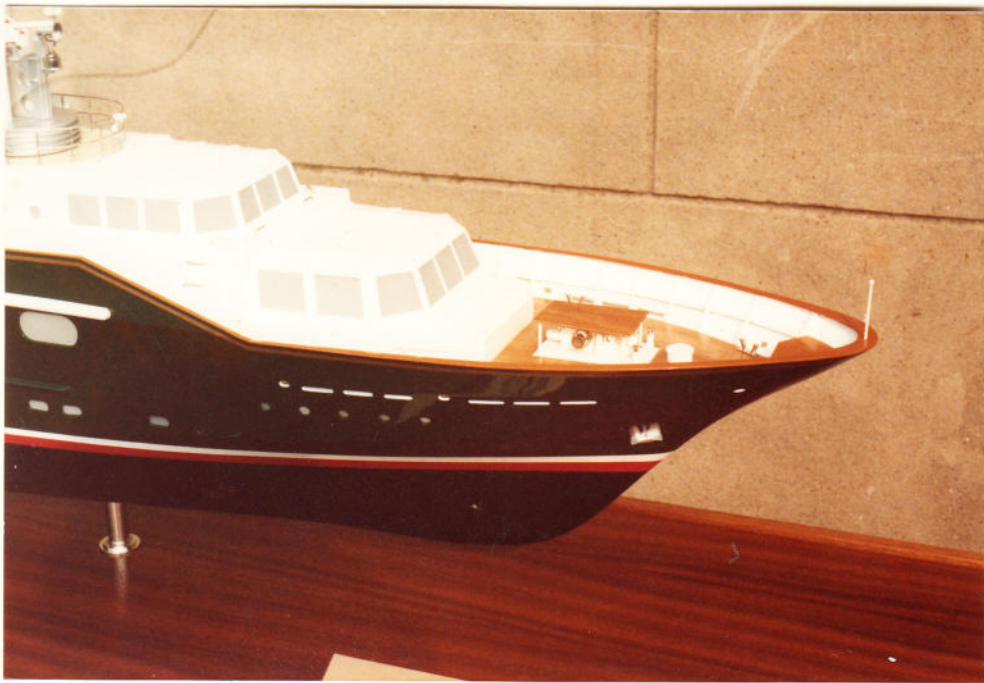
















The Highlander. 1944  
ex-COWETA  
1:80 2x 1994 ver.  
30/9/85







The Highlander 1956

1:80

30/9/85

200 mm.



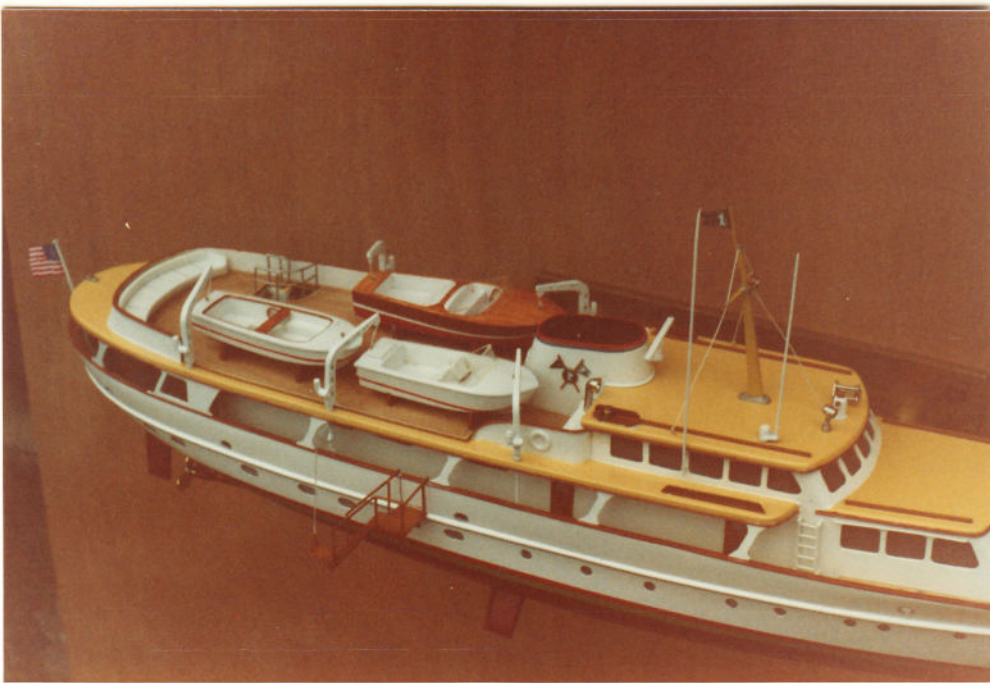




The Highlander 1966

1:80

3/9/85 220 w.r.











The Highlander.  
Ton Bannenberg:  
1:80  
11x 1823 1/2 wt.  
30/9/85

