



Flet Fregatenskip "Doelwijk"

III

Fabricated

ter behoeve van ~~het Koninklijk~~ ~~Rotterdamse~~ ~~Lloyd~~
vtd. (N.V. Stoomvaartmaatschappij Kon. Rotterdamse Lloyd)

~~1930~~

Gemaakt op schaal 1:25
Built on the scale of

Model van het fregatschip "Doelwijk" van de Kon.
Rotterdamse Lloyd; gebouwd op schaal 1:25 in
1930. 1933

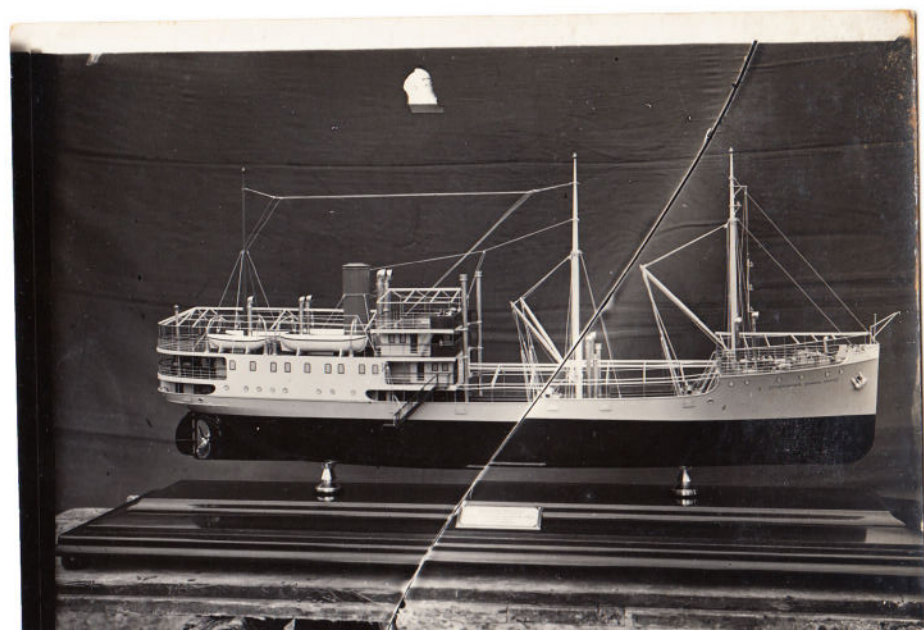
8

N.V.v/h Fa C. Dubbelman
Emmastraat 10
Slikkerveer.

1145
H

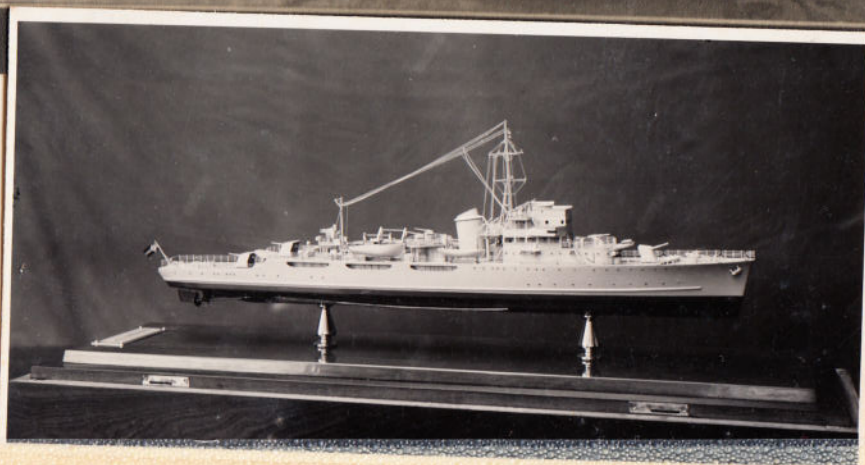
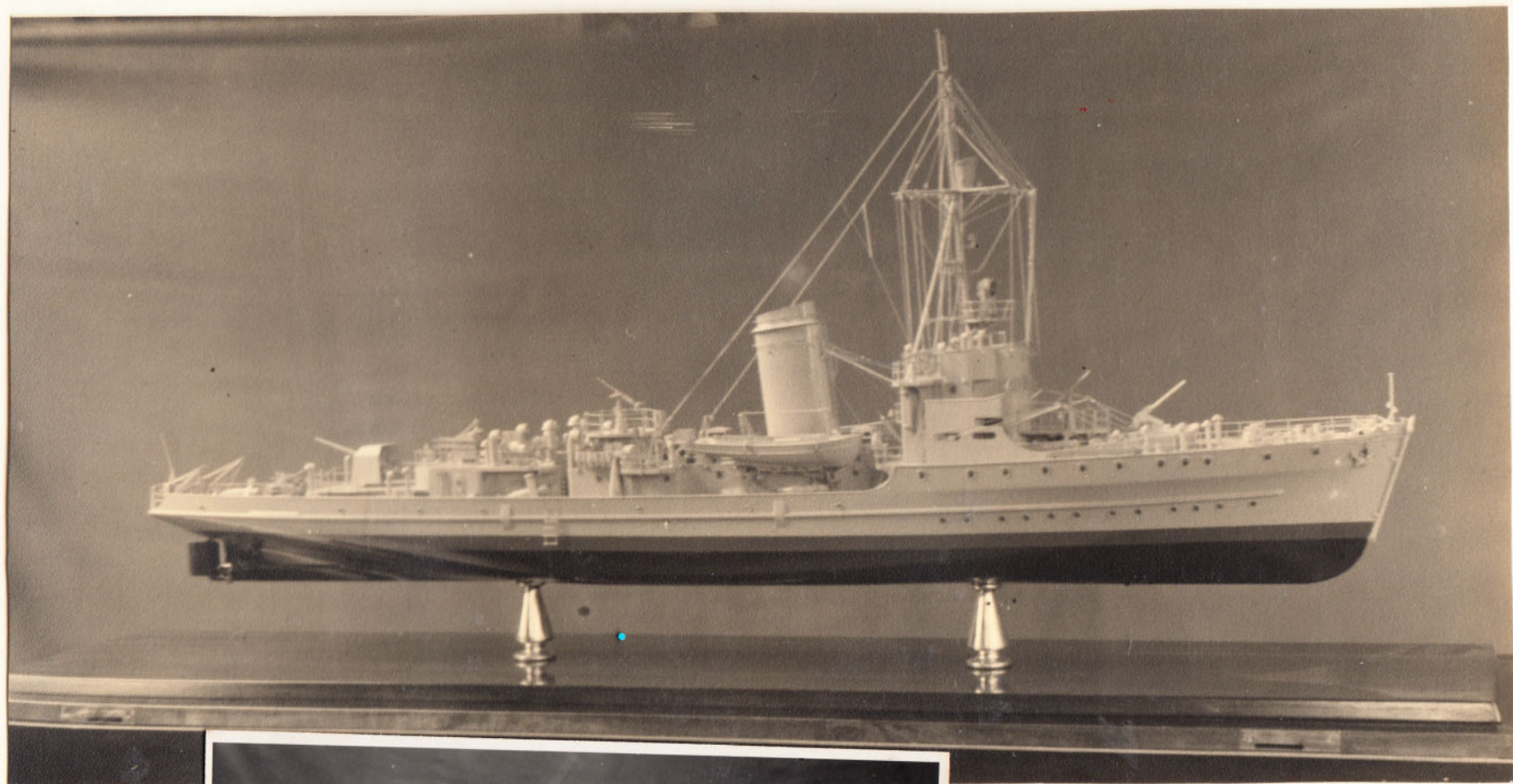
Dubbelman Ridderkerk B.V.
Emmastraat 10
2983 EC Ridderkerk

N.V. Modelbouw v/h Fa C. Dubbelman
Slikkerveer - Holland

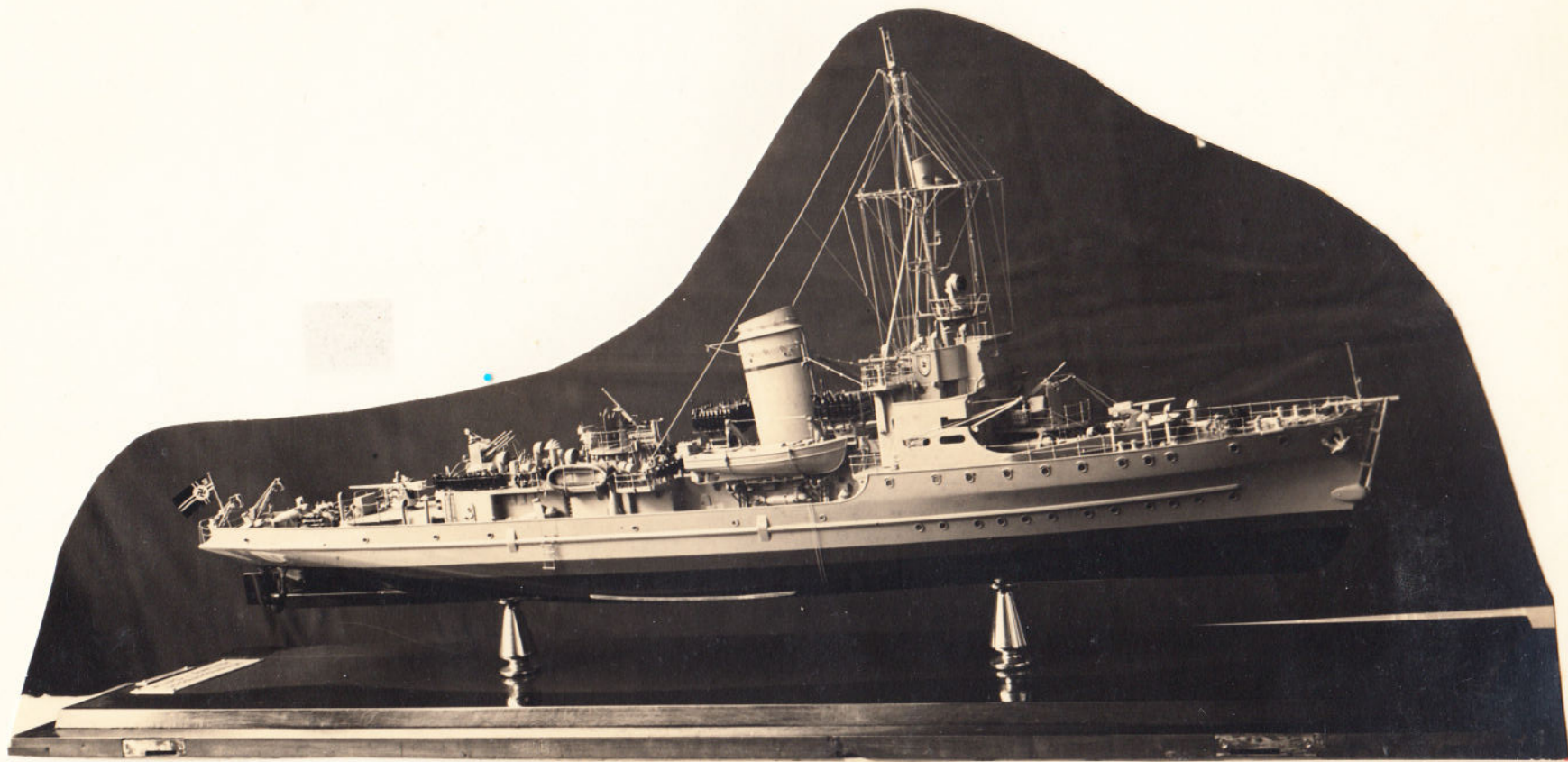


Alvini Matesy General Hunter.

Miami
Palmsville working
1930 JFD Box 1:50



Minesweeper 1943
1:50

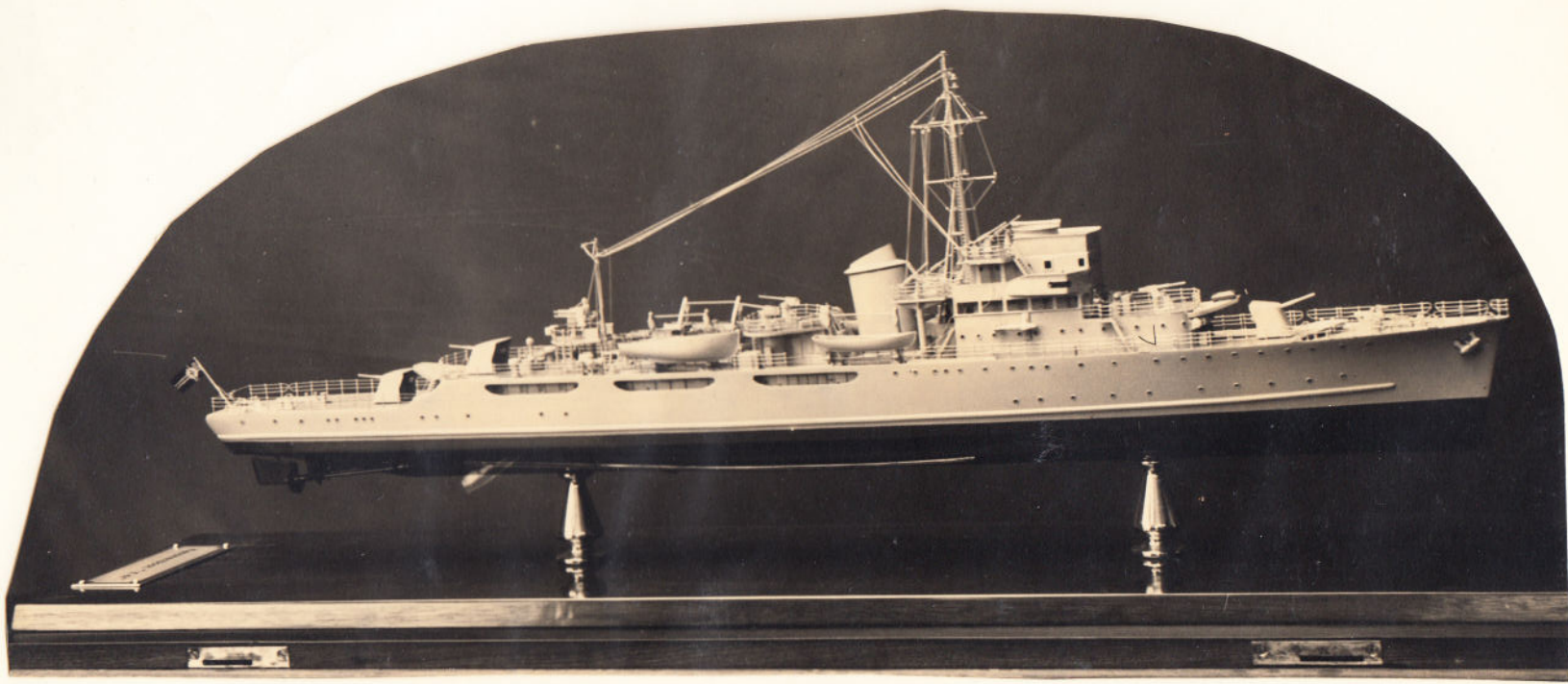


Mijnen veger 1943

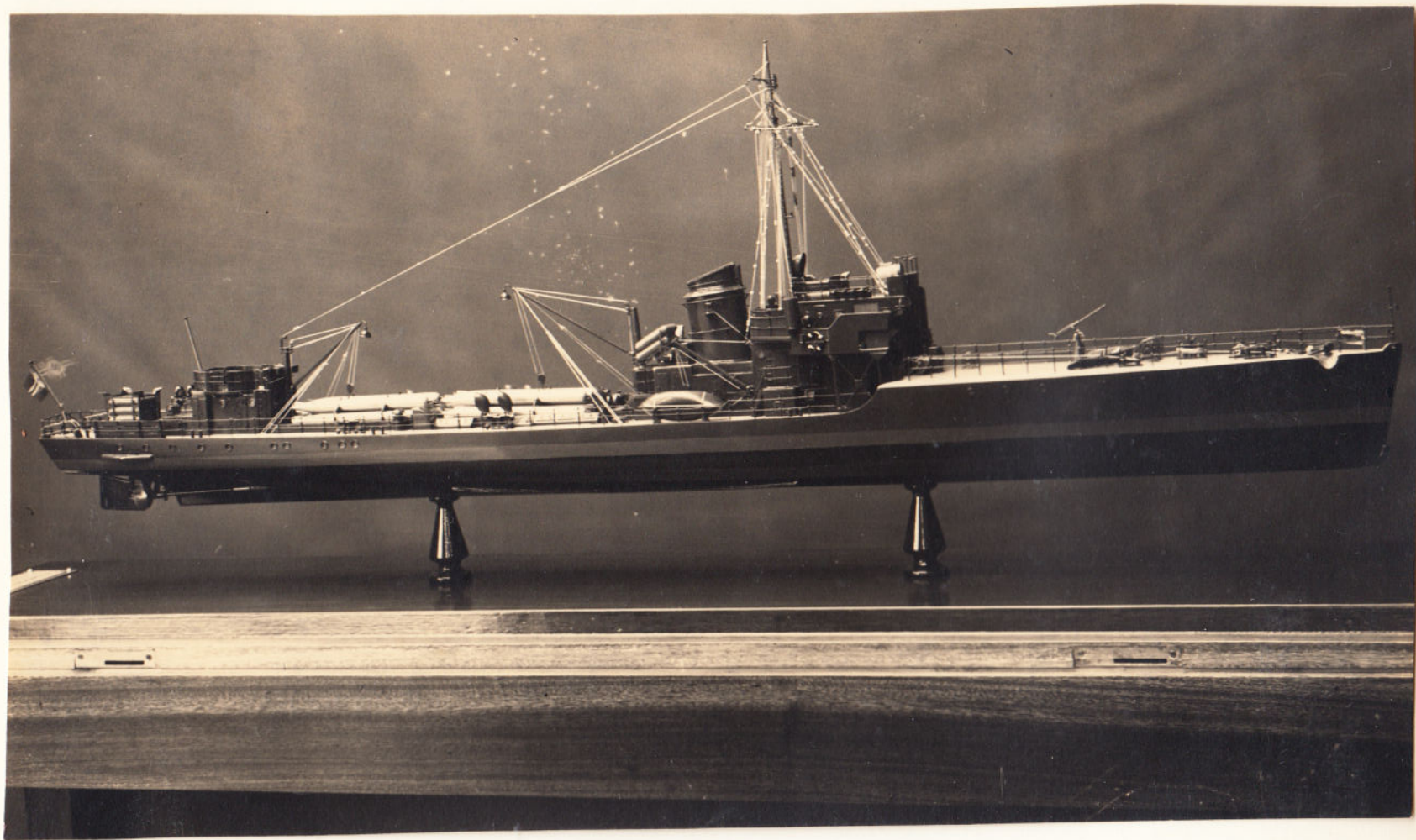


Minesweeper 1944

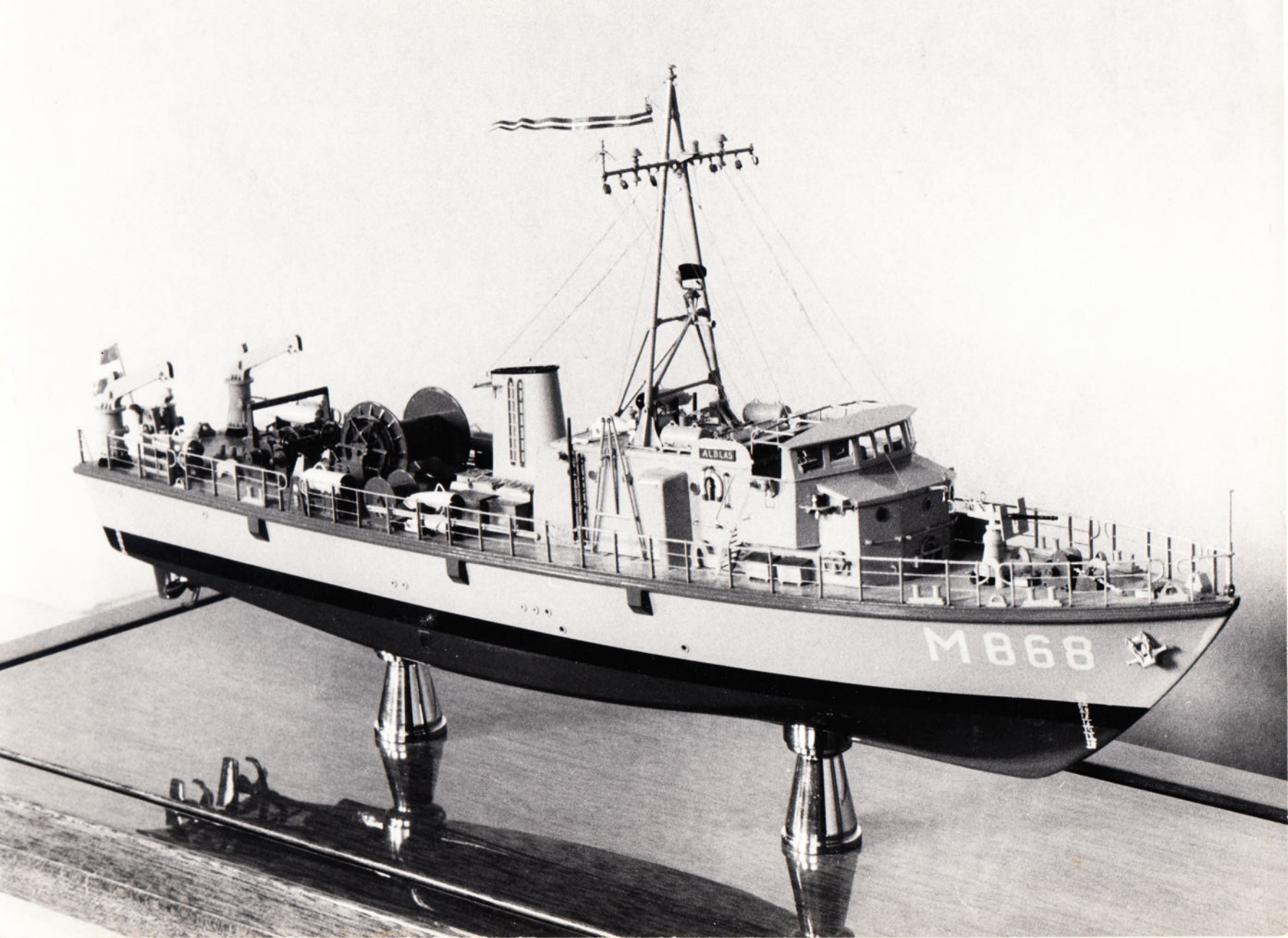
1:25



torpedo fager 1944
1:100

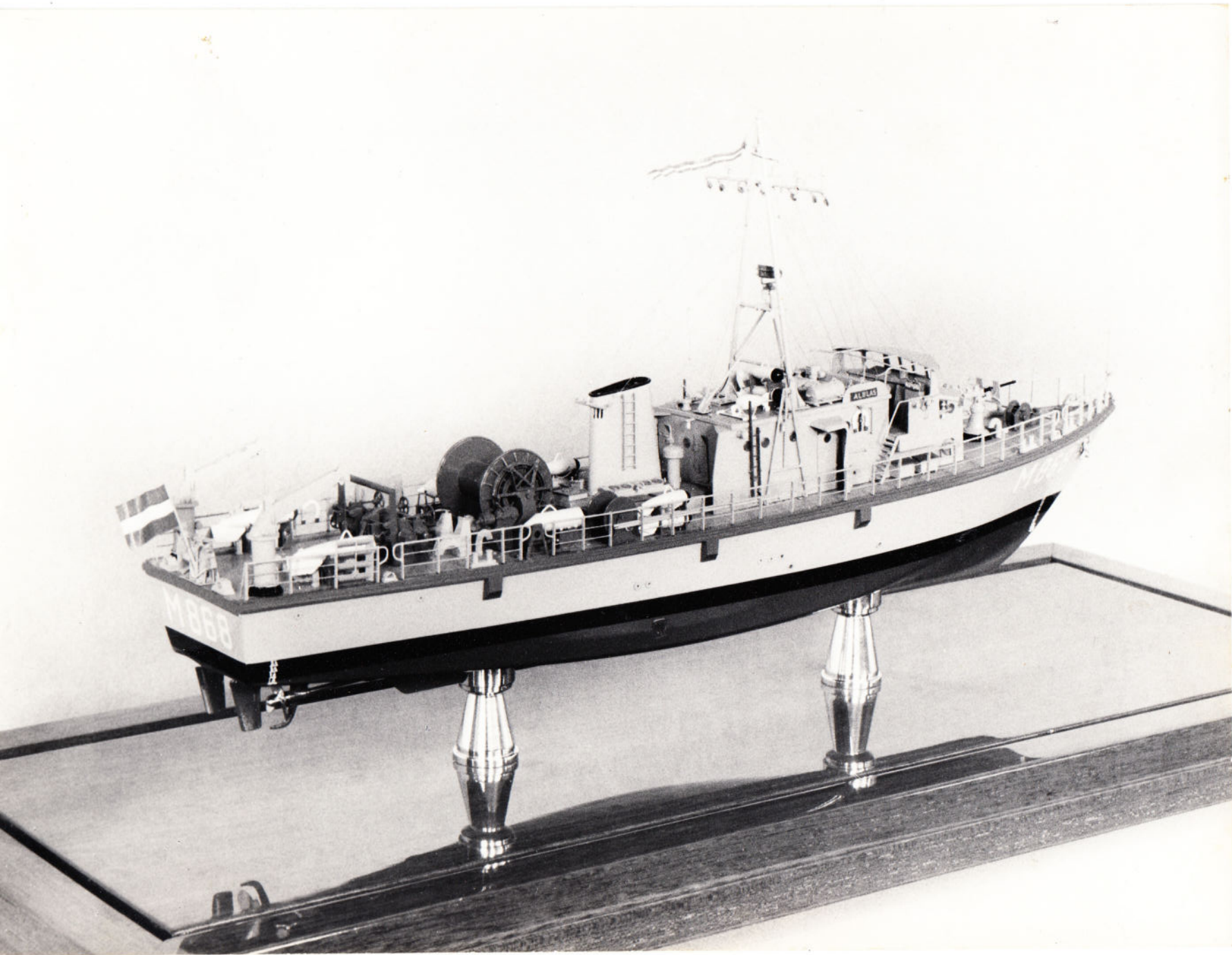


Torpedo transport 1944



Journal de Robert de
Litz
3-1962

envelopes et autres documents.



1:75 on ^{reper} ~~diapoda~~ mynna ~~for~~

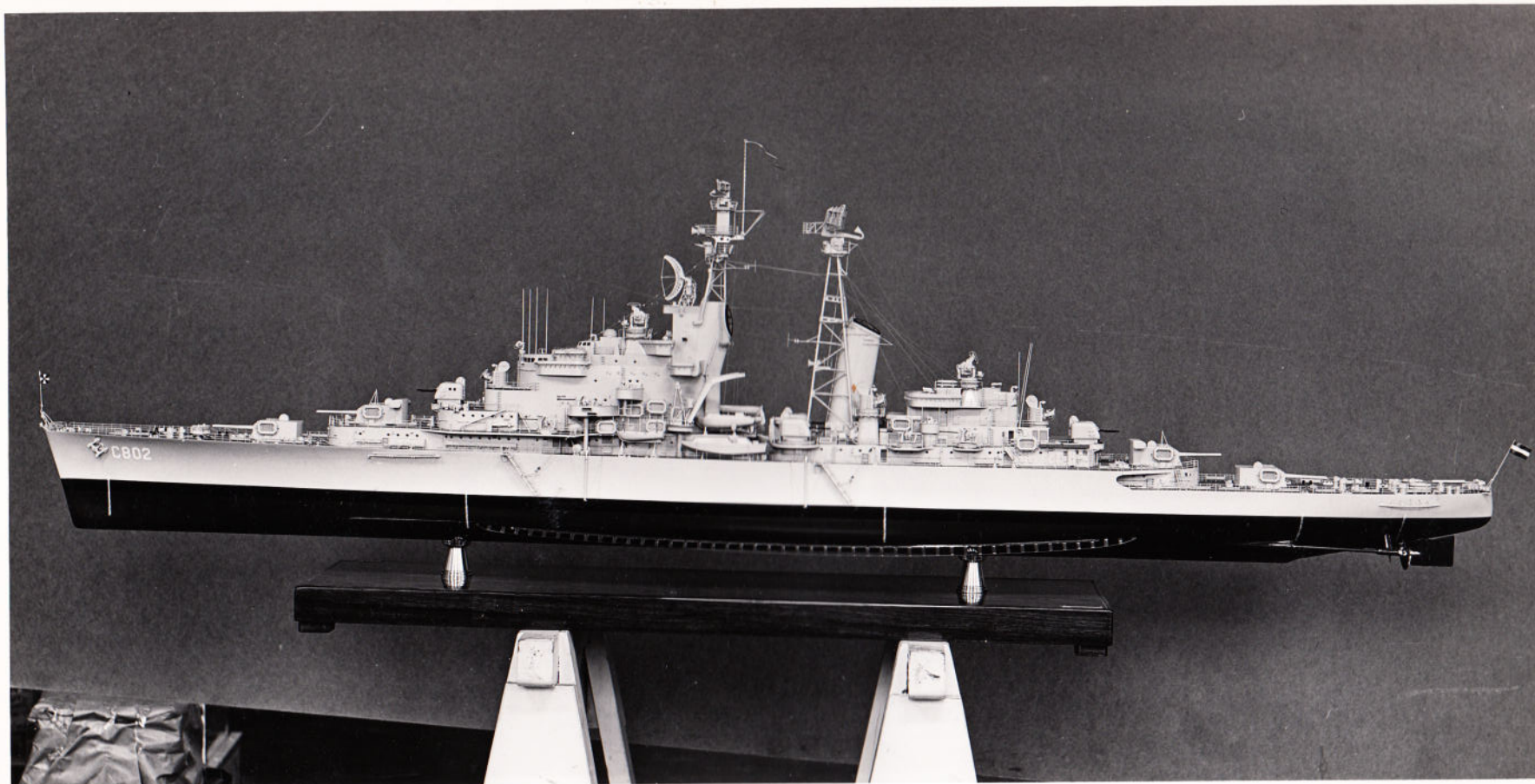
3-1962

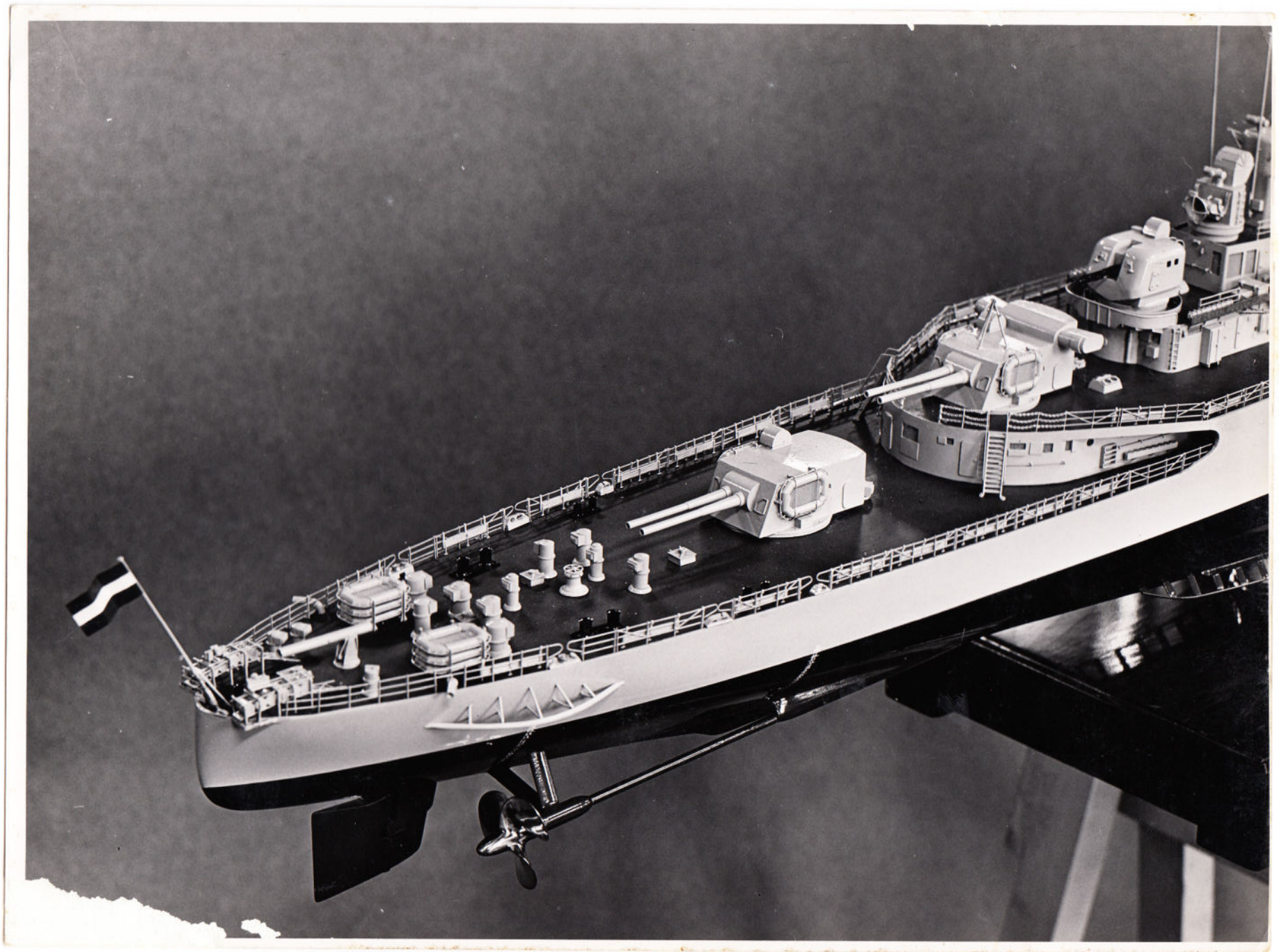


DE ZEVEN PROVINCIEËN

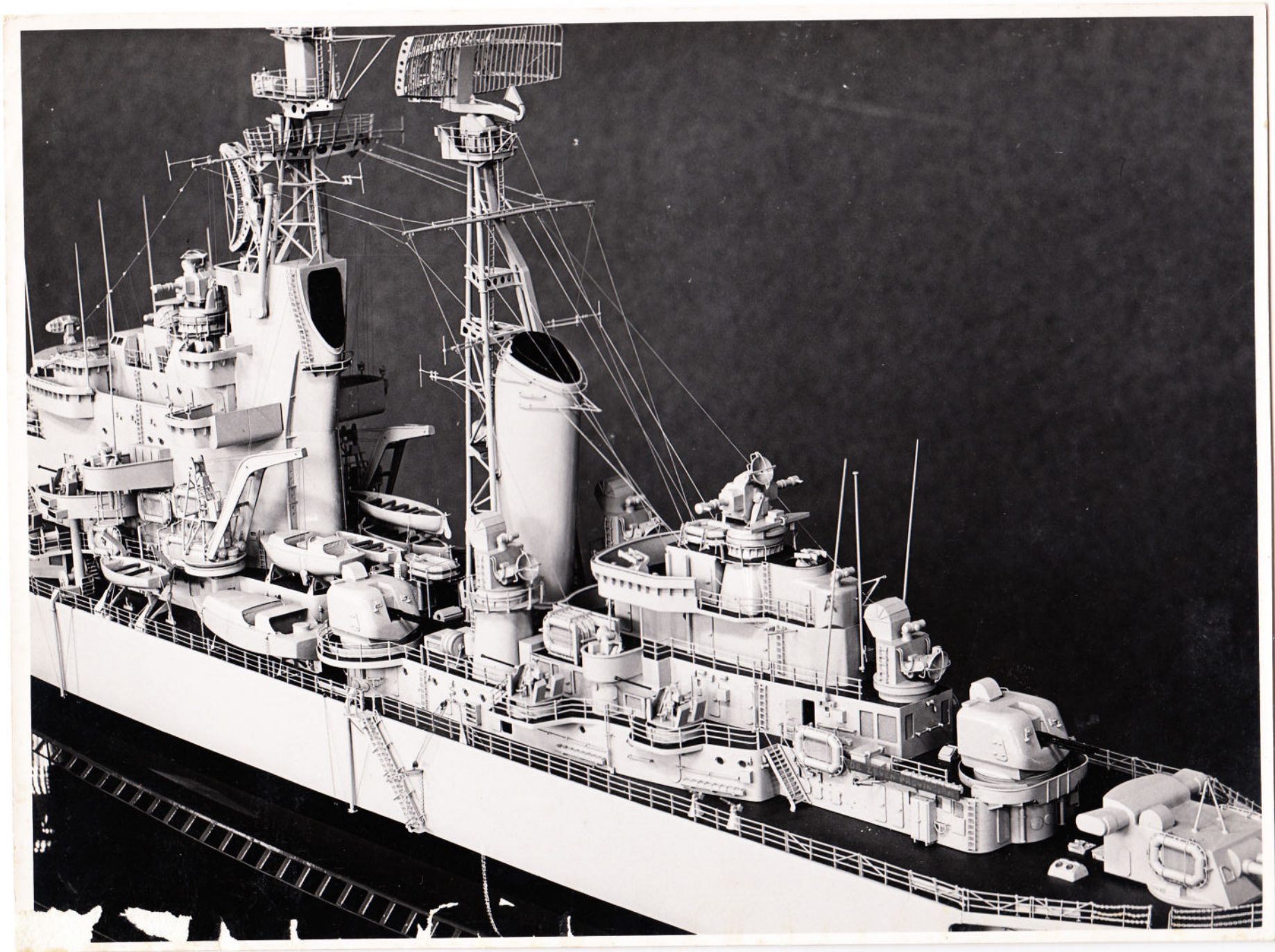
1:100

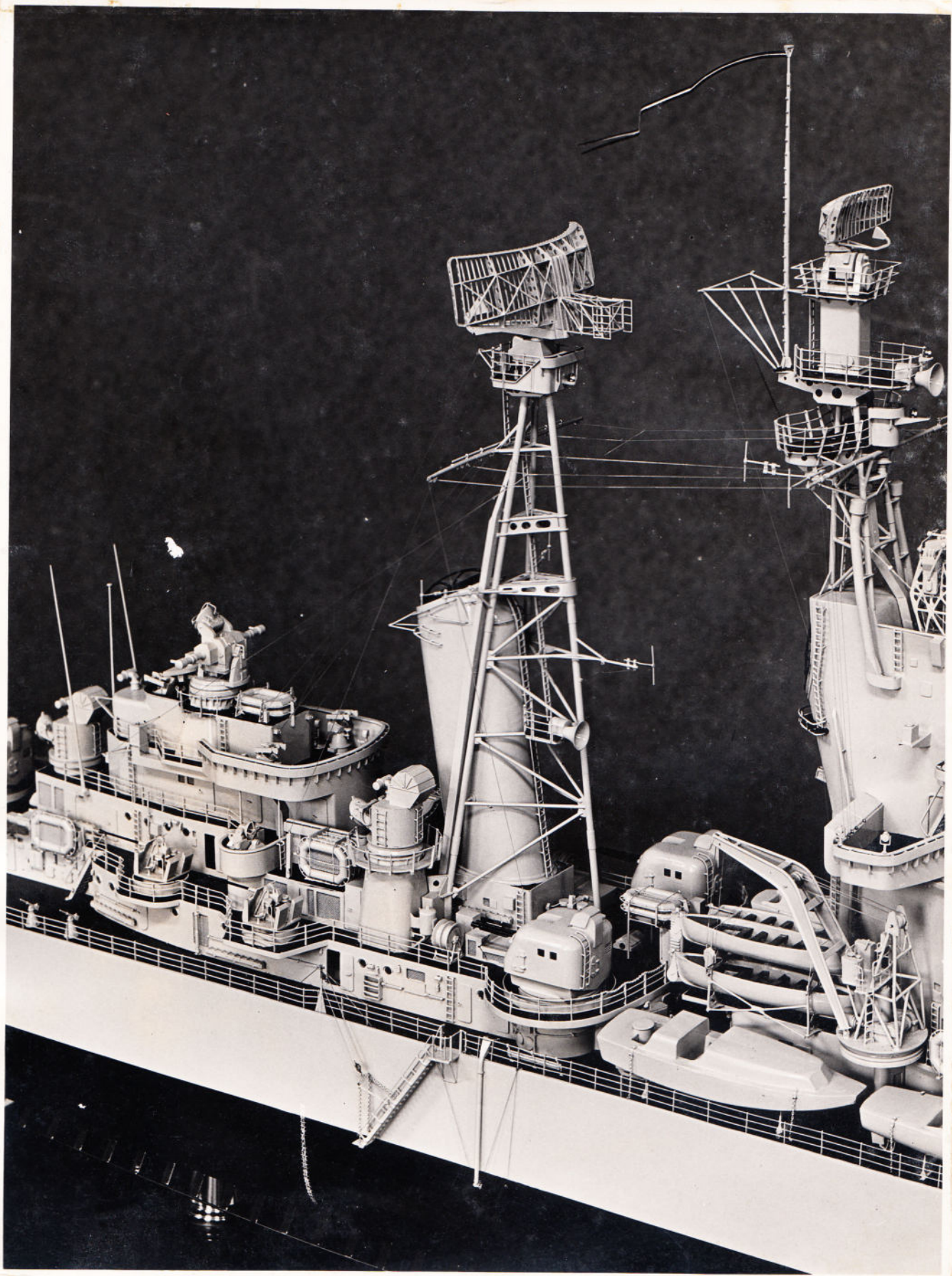
1958



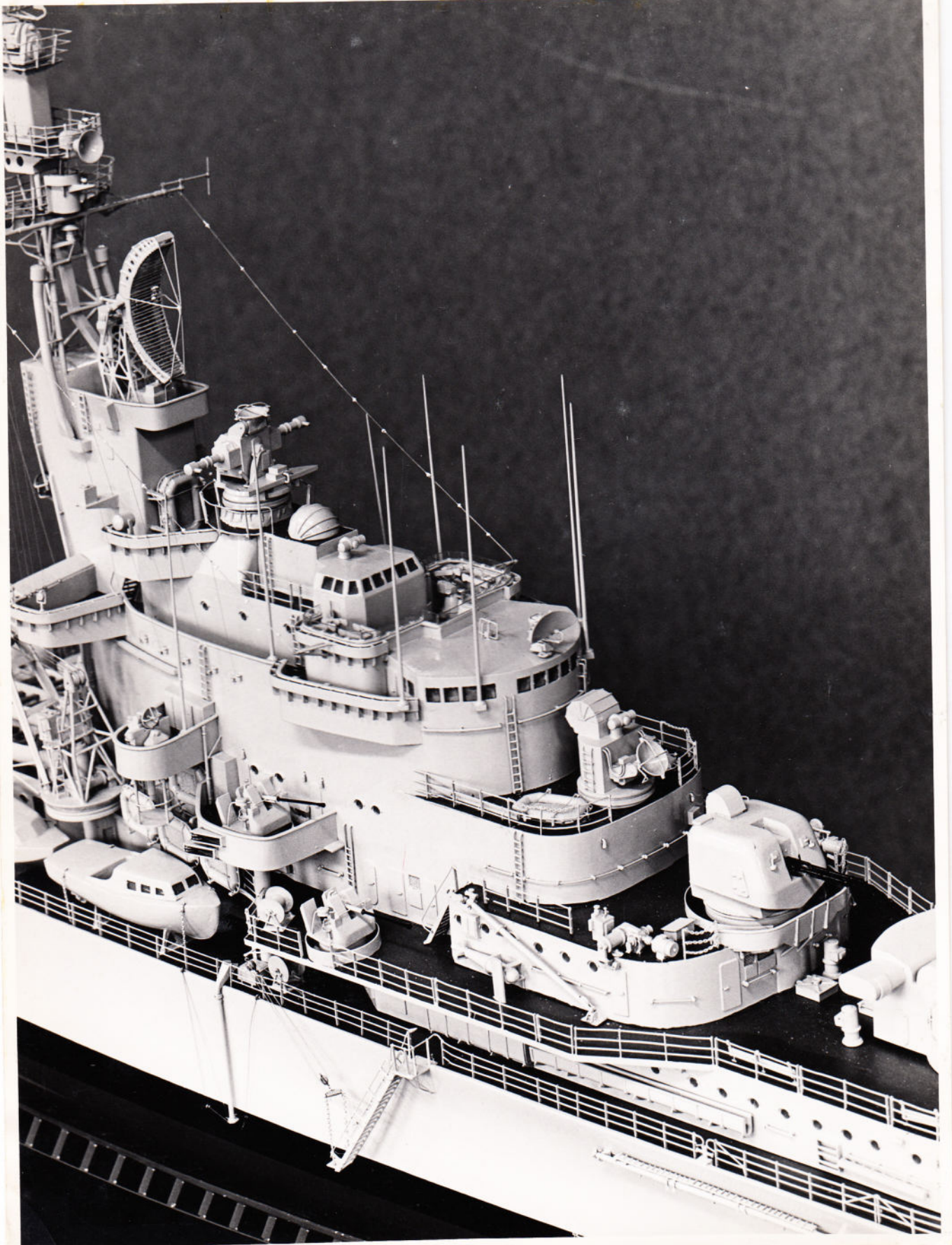


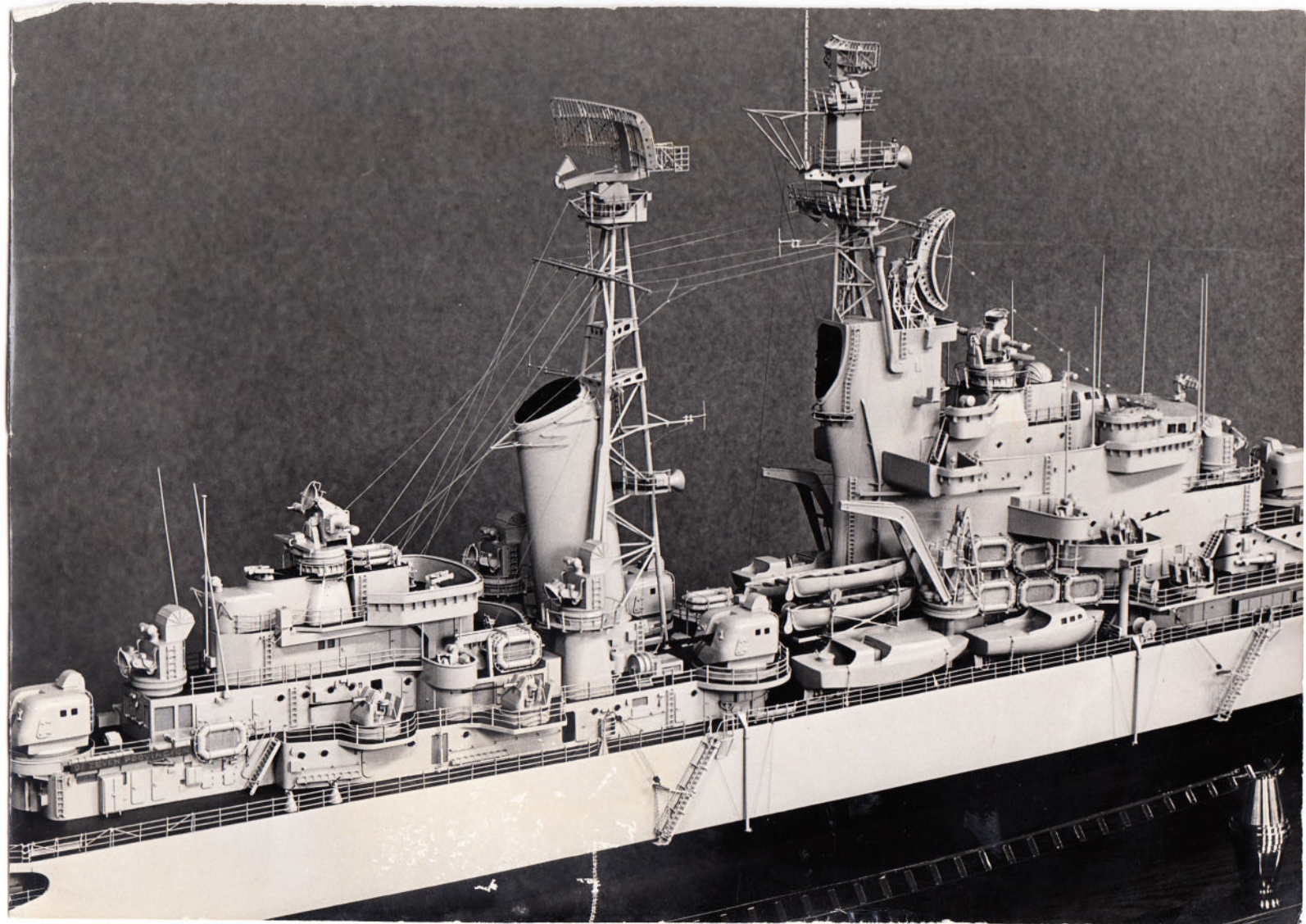
1958



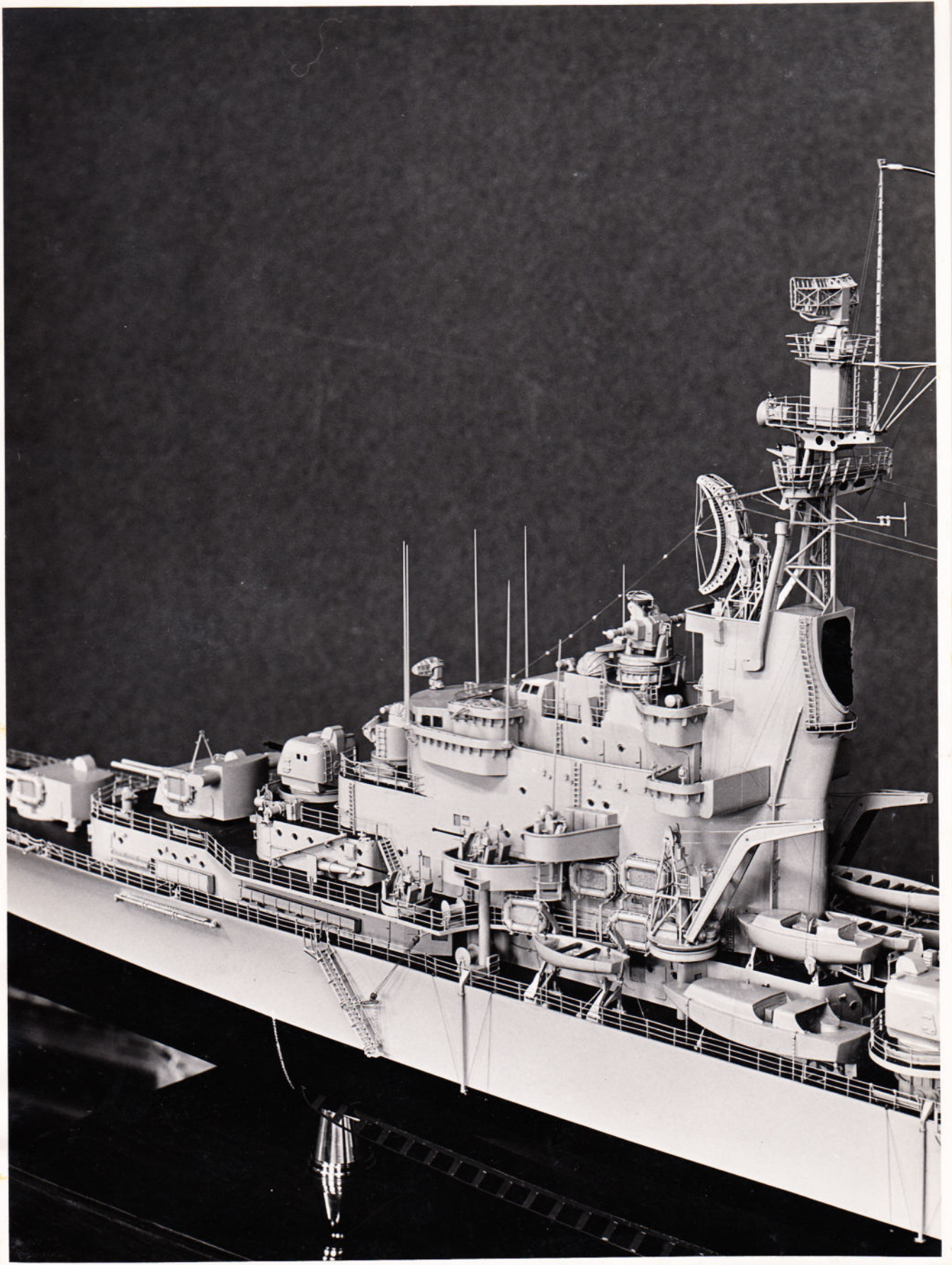


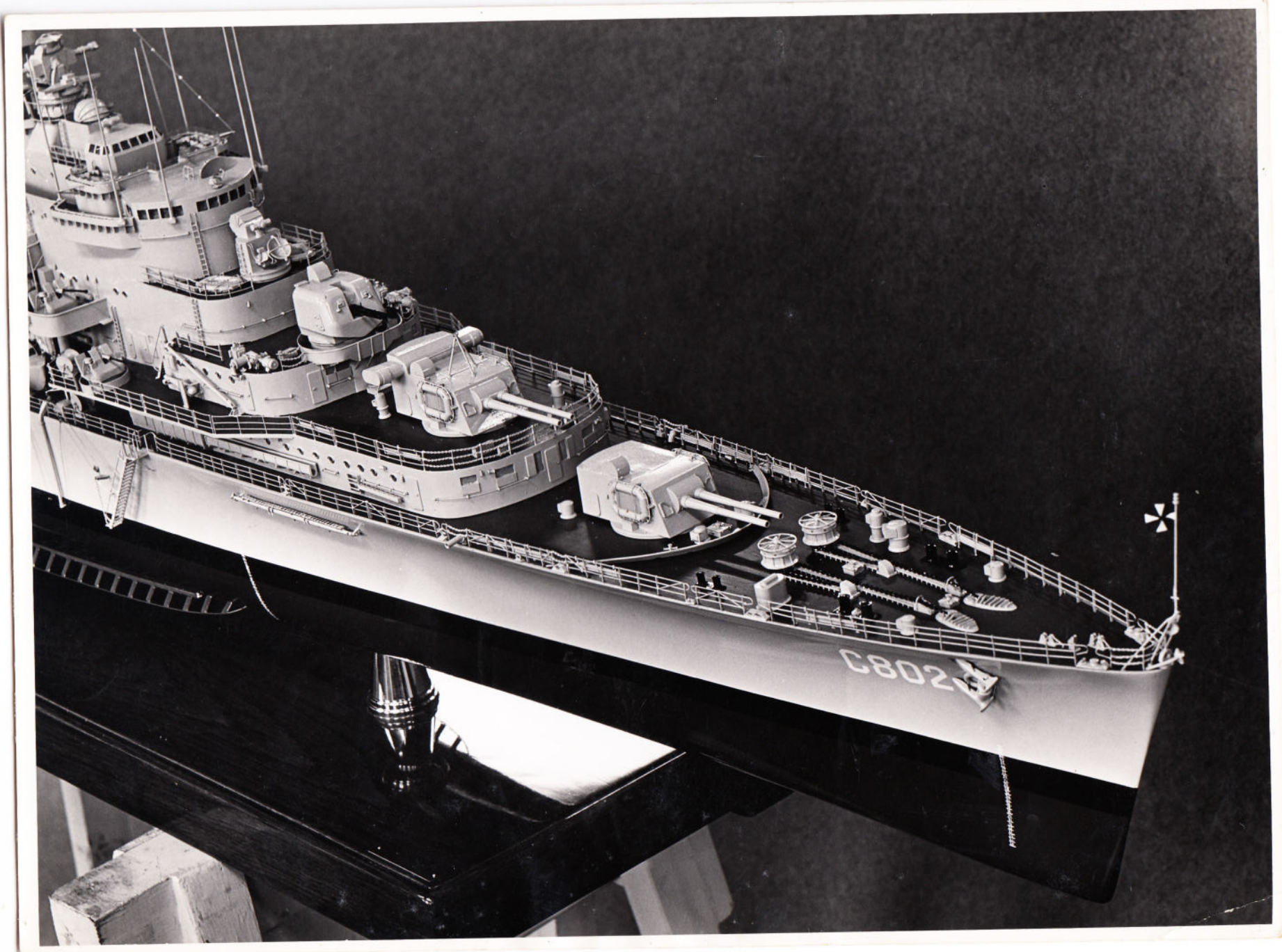
8561
1958



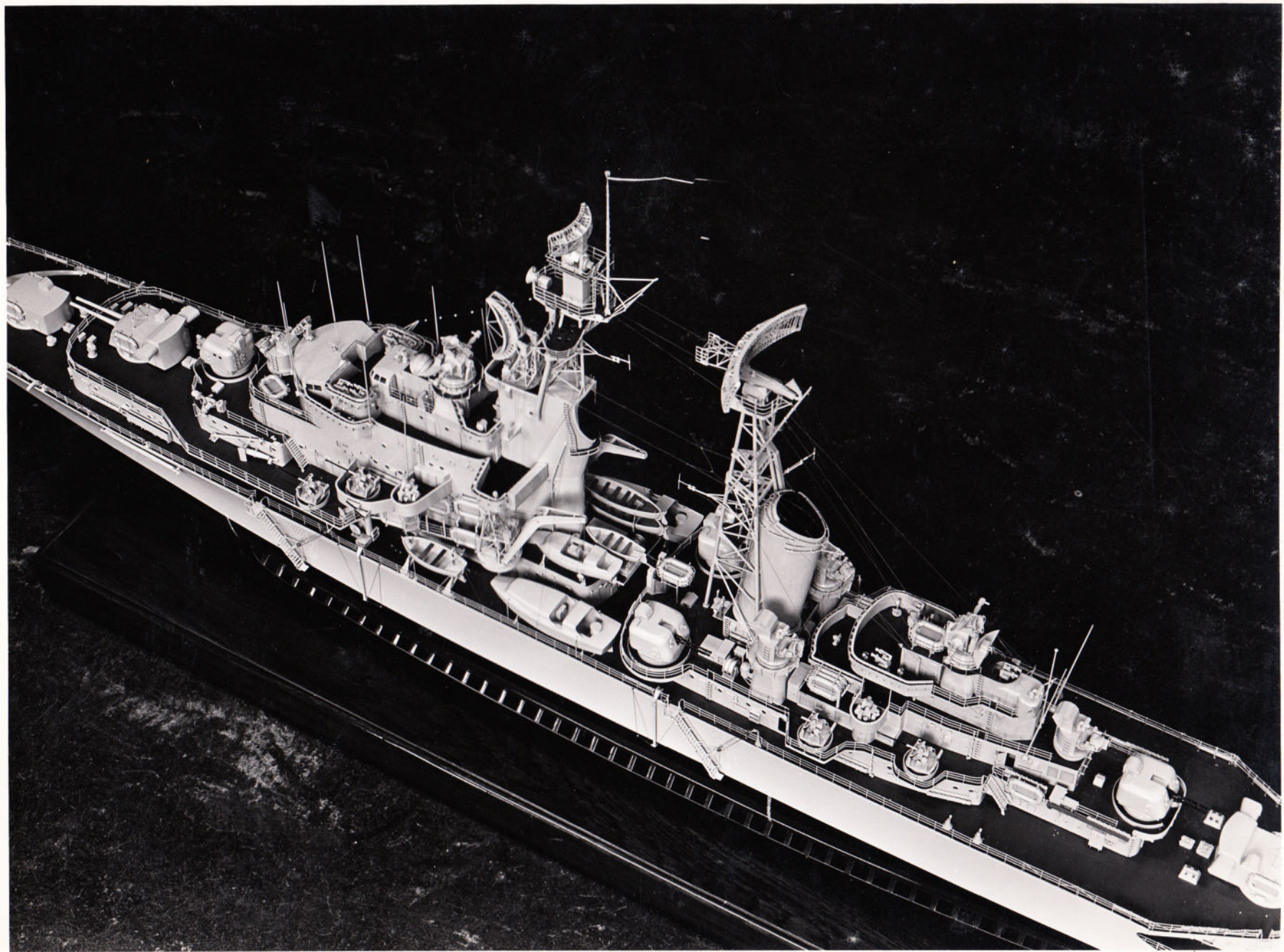


1958





1958



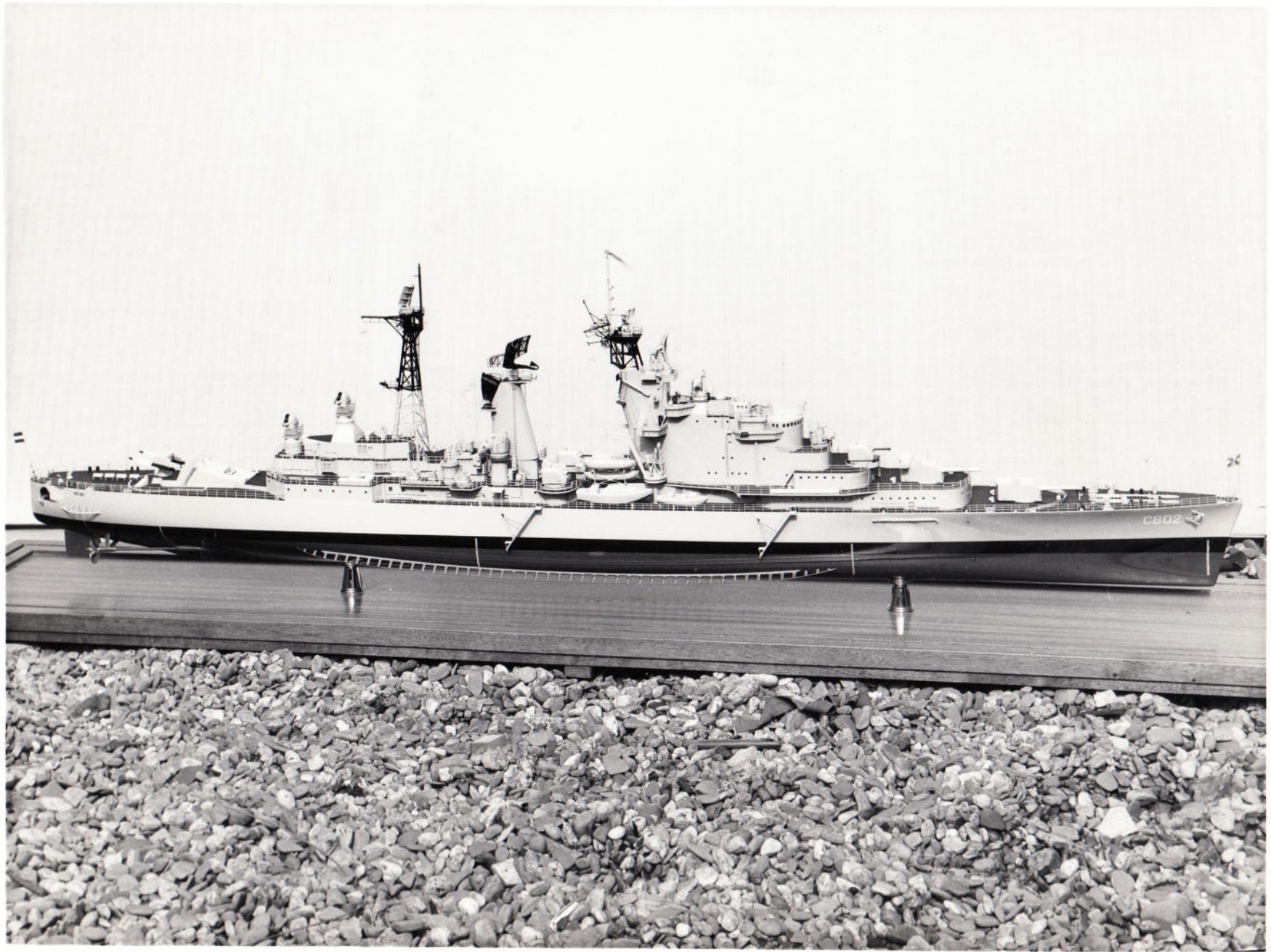
DE ZEVEN PROVINCIE

VERBOUW

1965

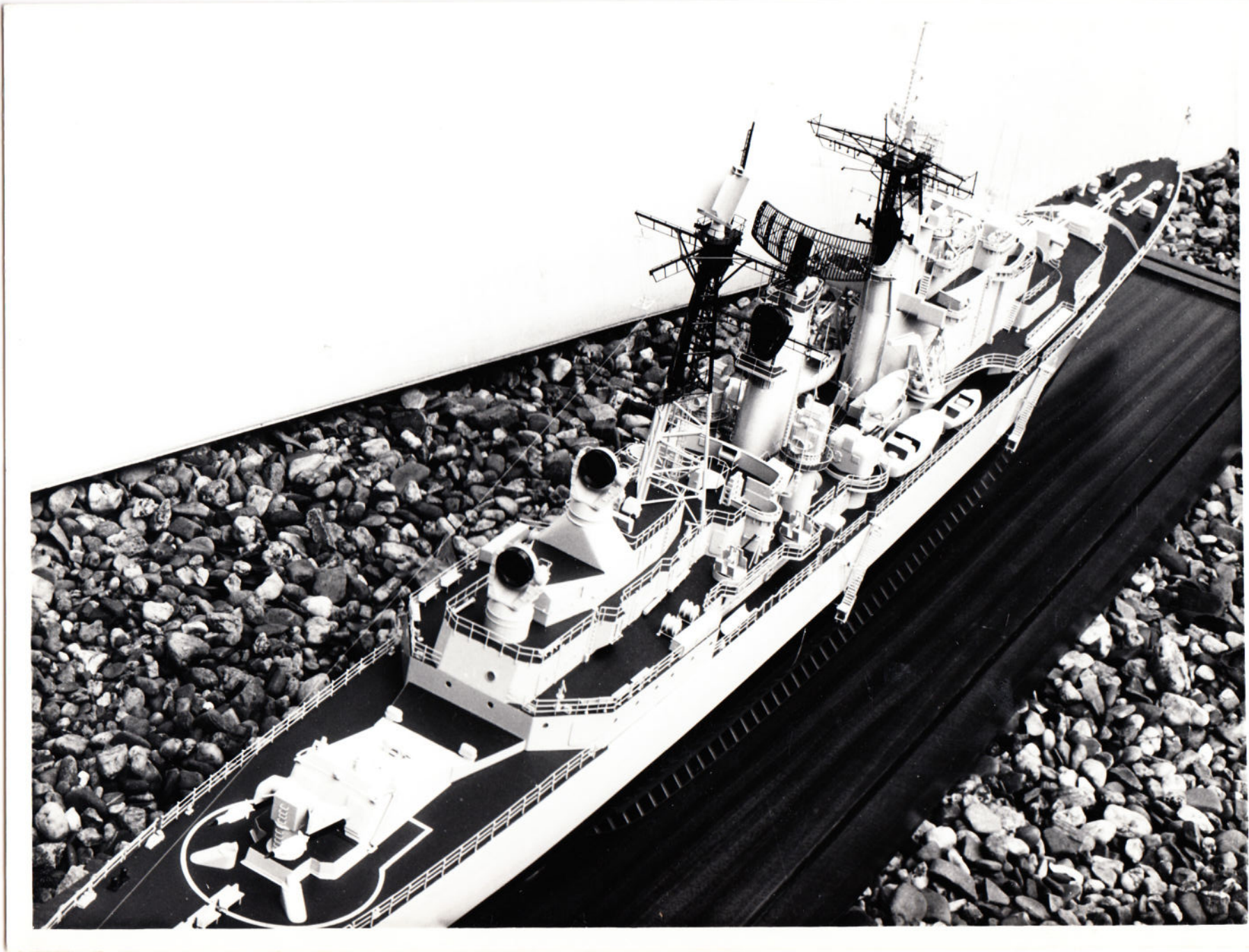
1:100

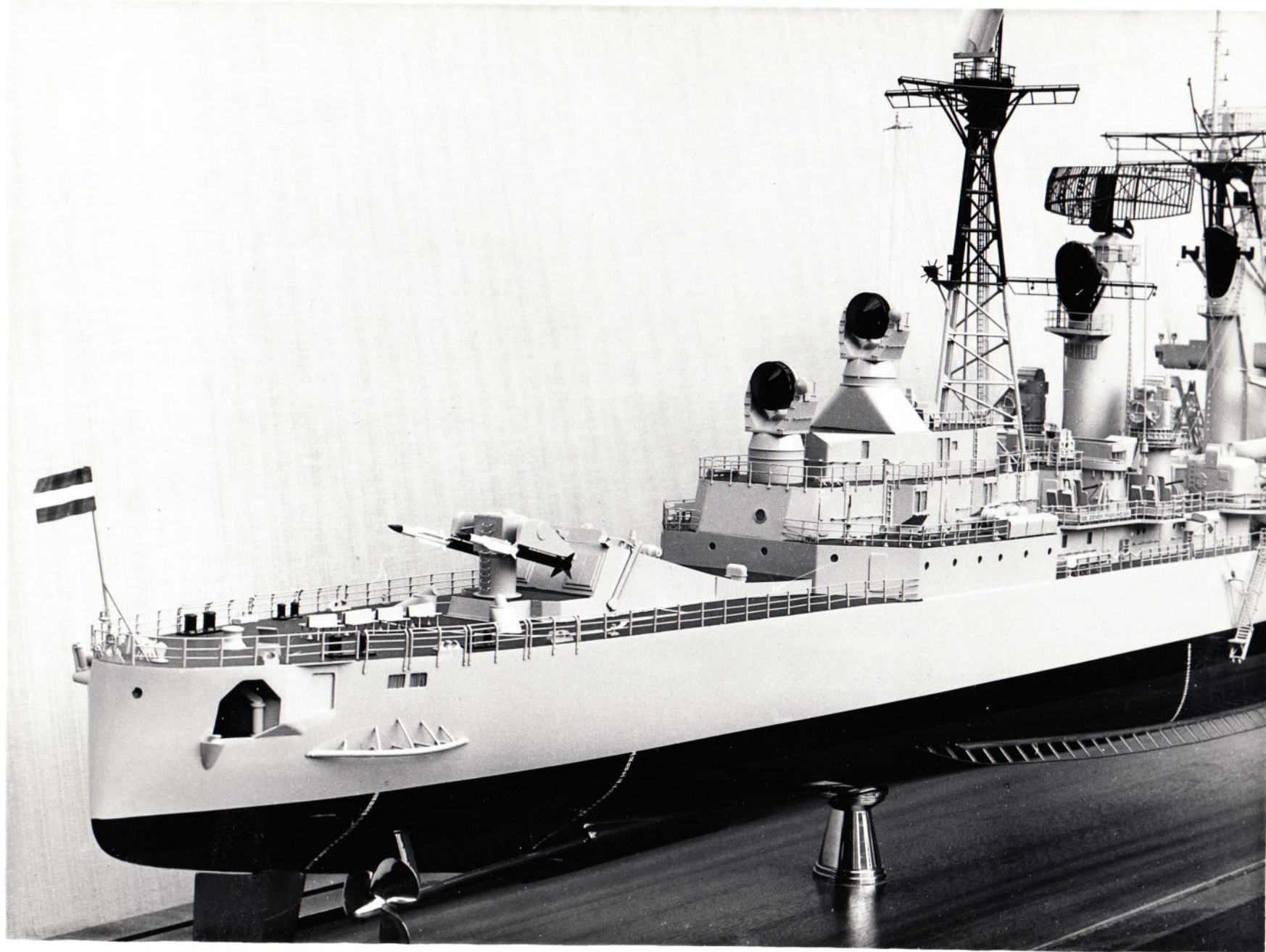




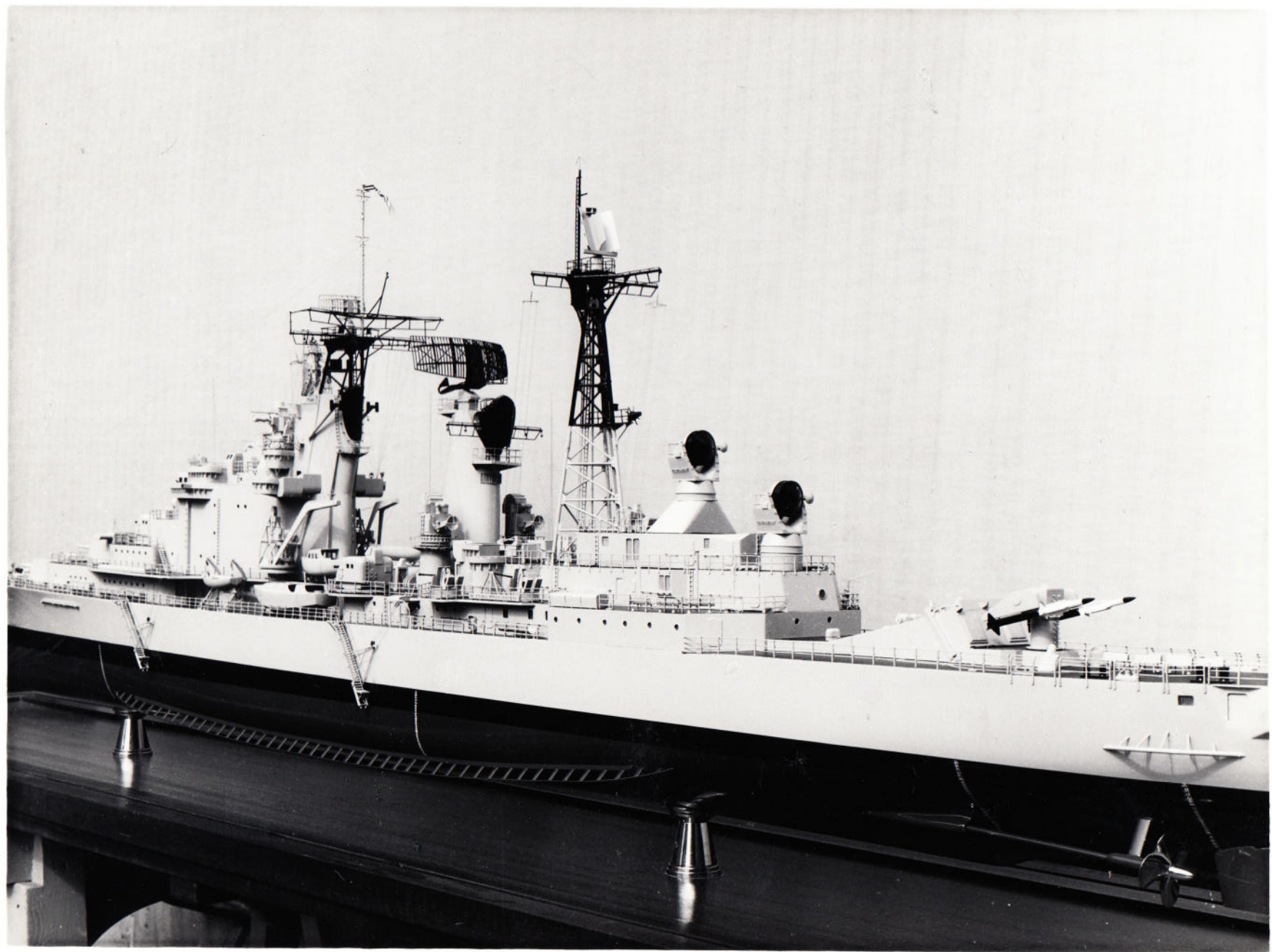
1
VERB.

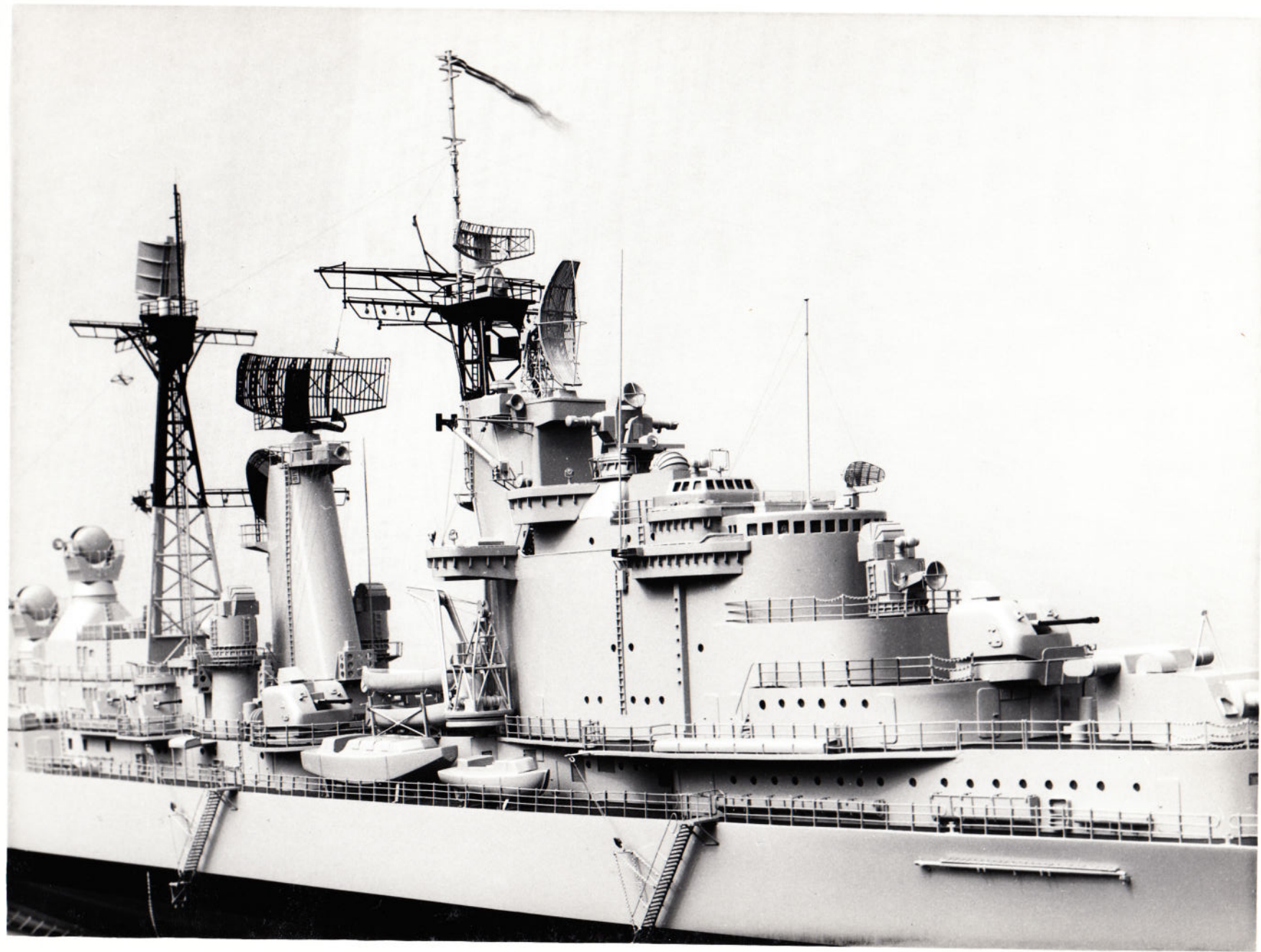
1965





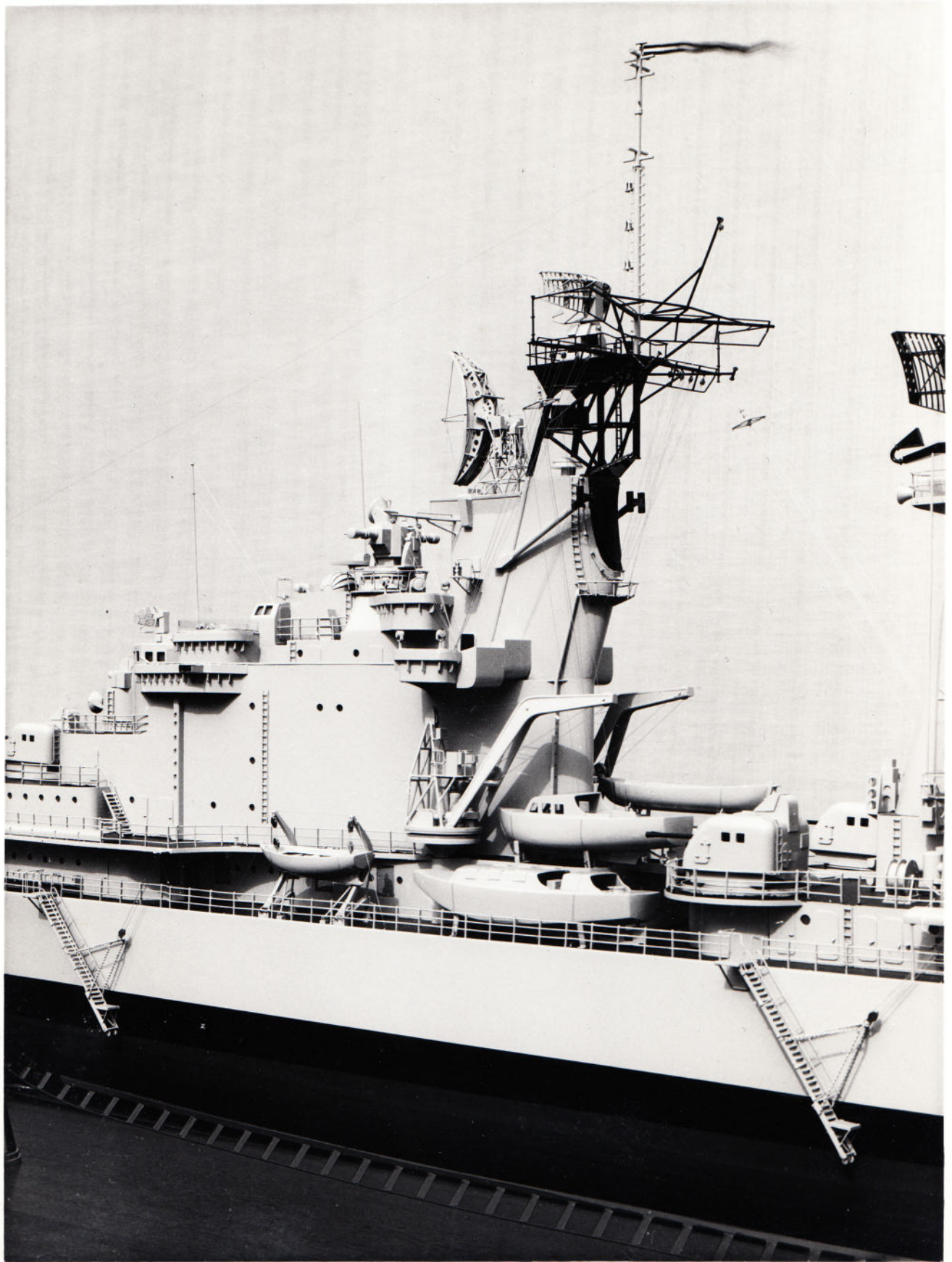
verb
1965

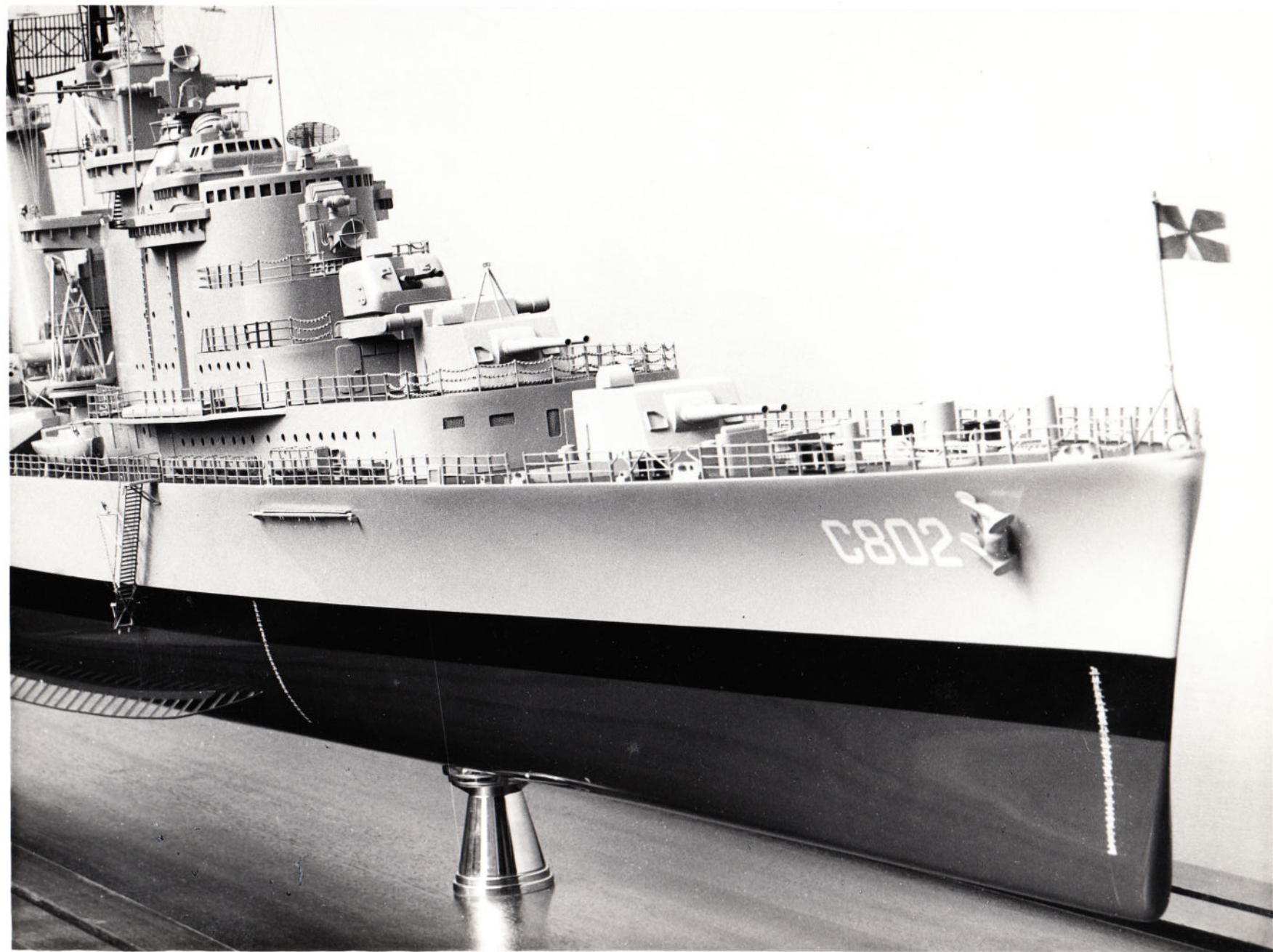




DE ZEVEN PROVINCIE
VERBORW

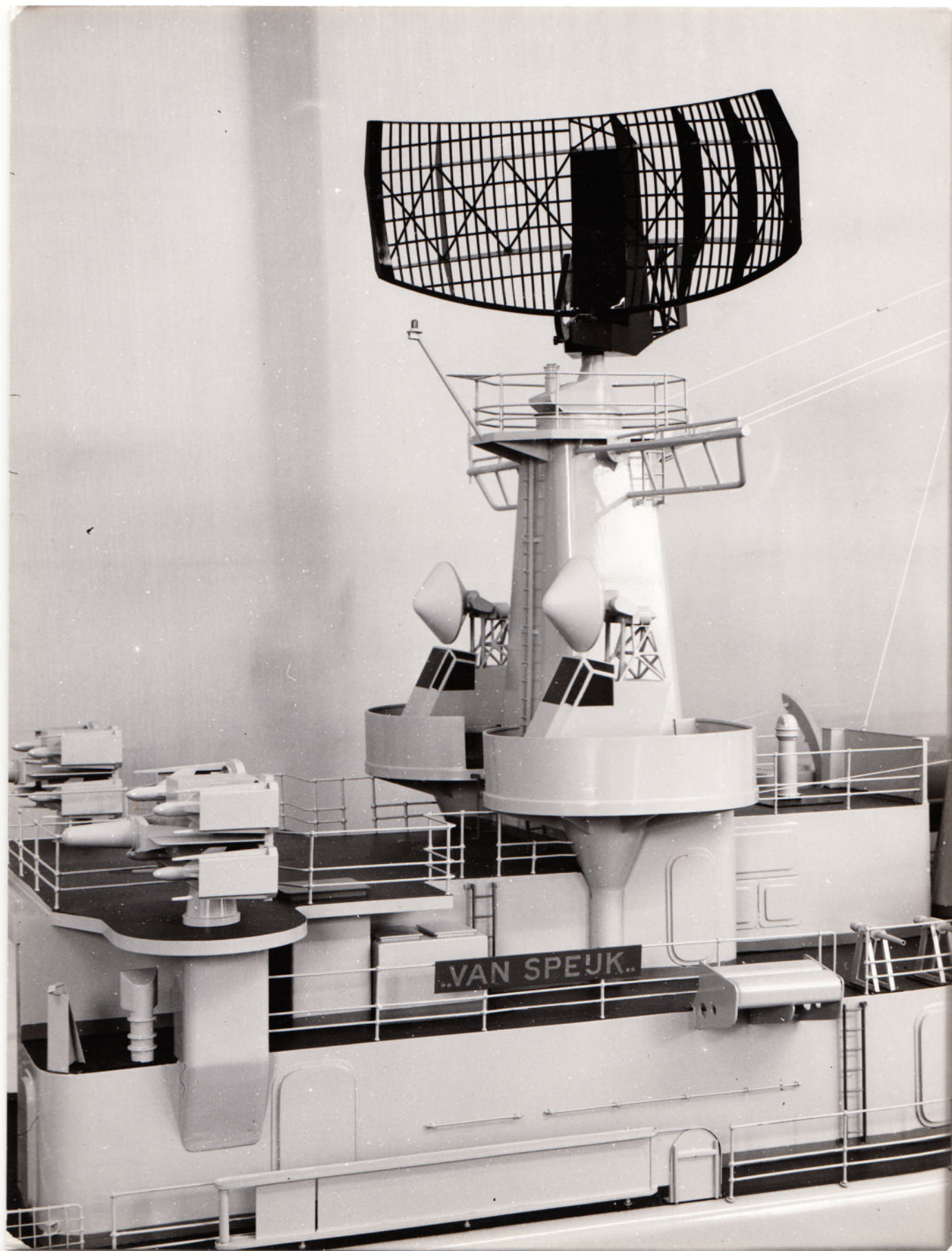
1965



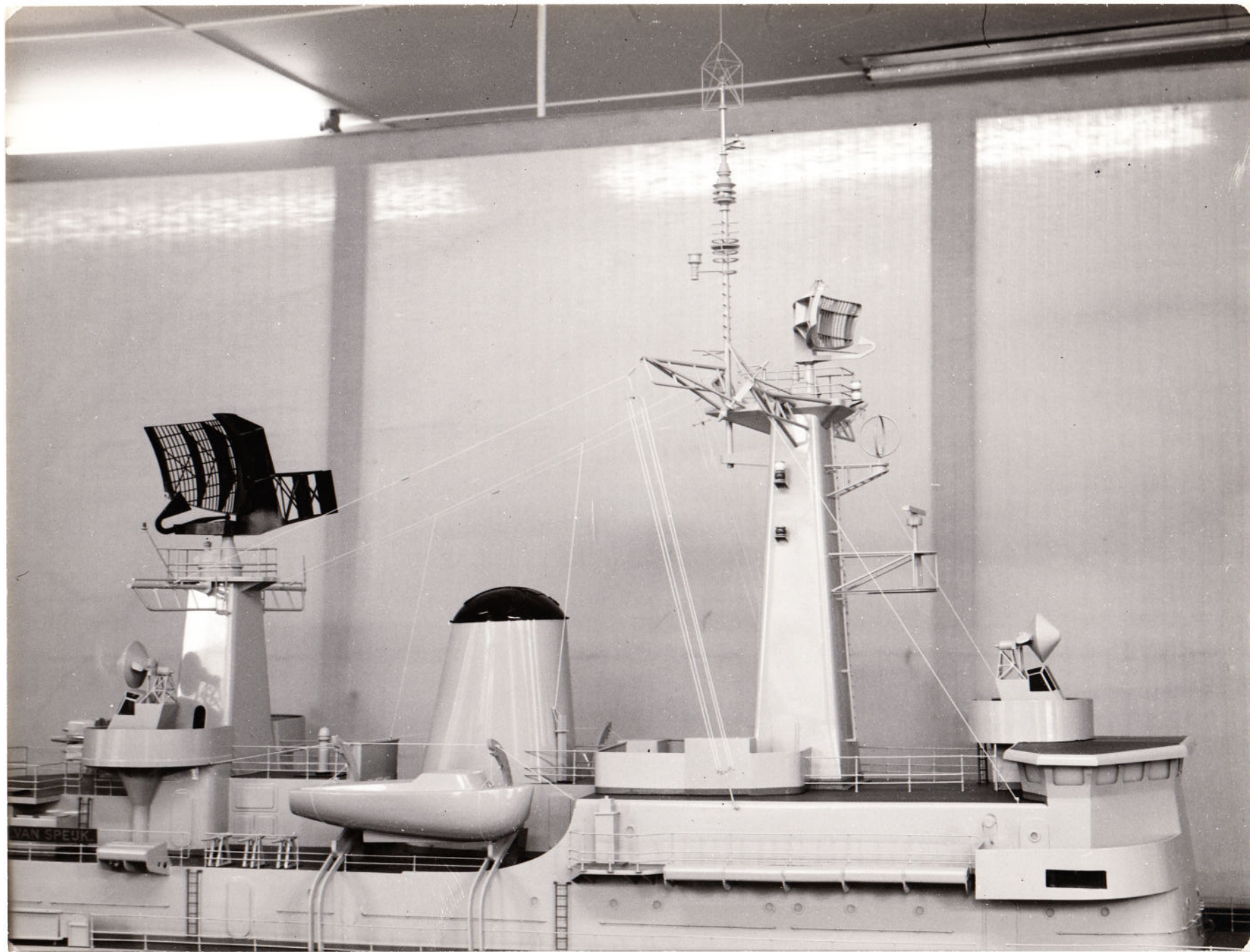


VAN SPEYK
1325

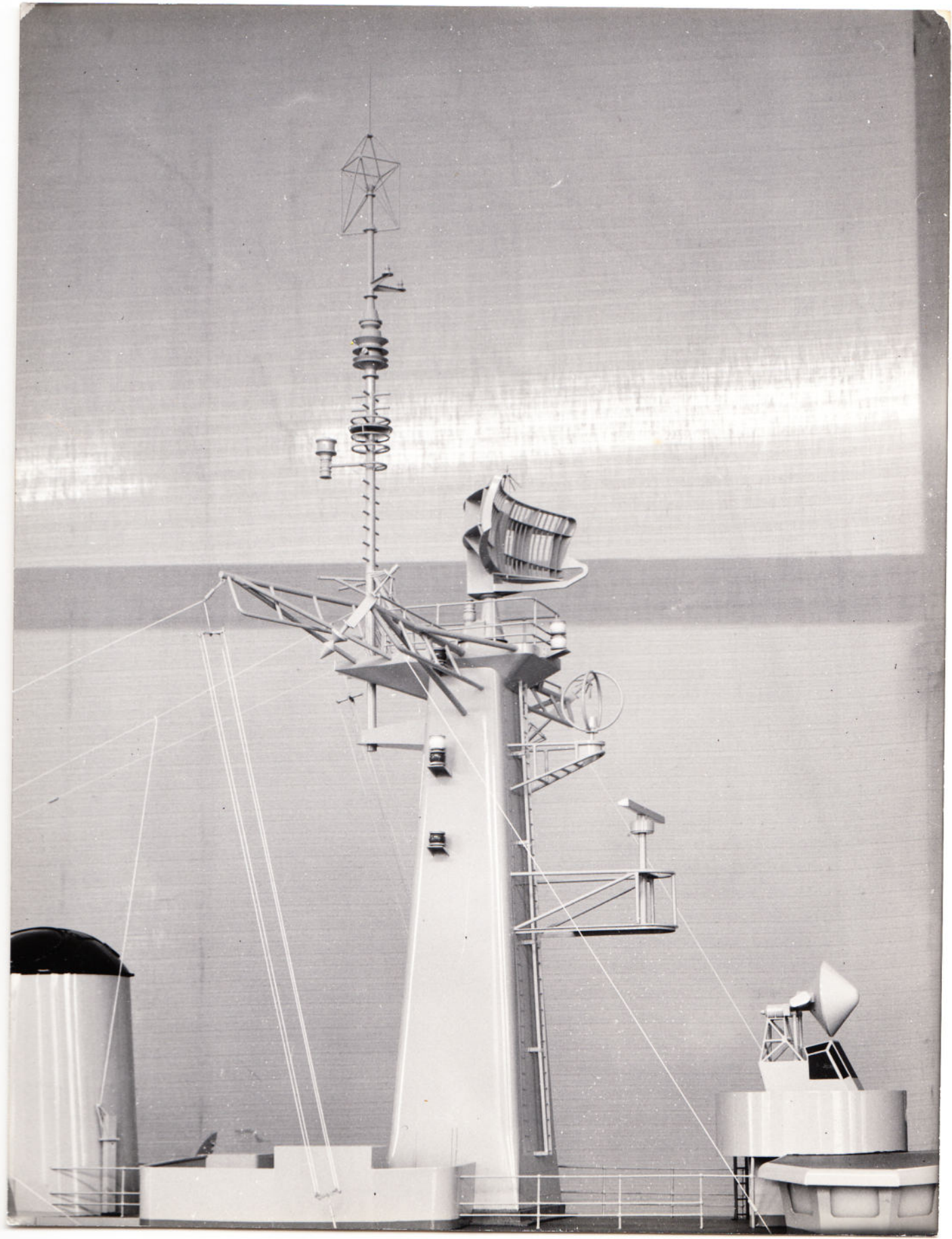
1966



VAN SPEYK
1925

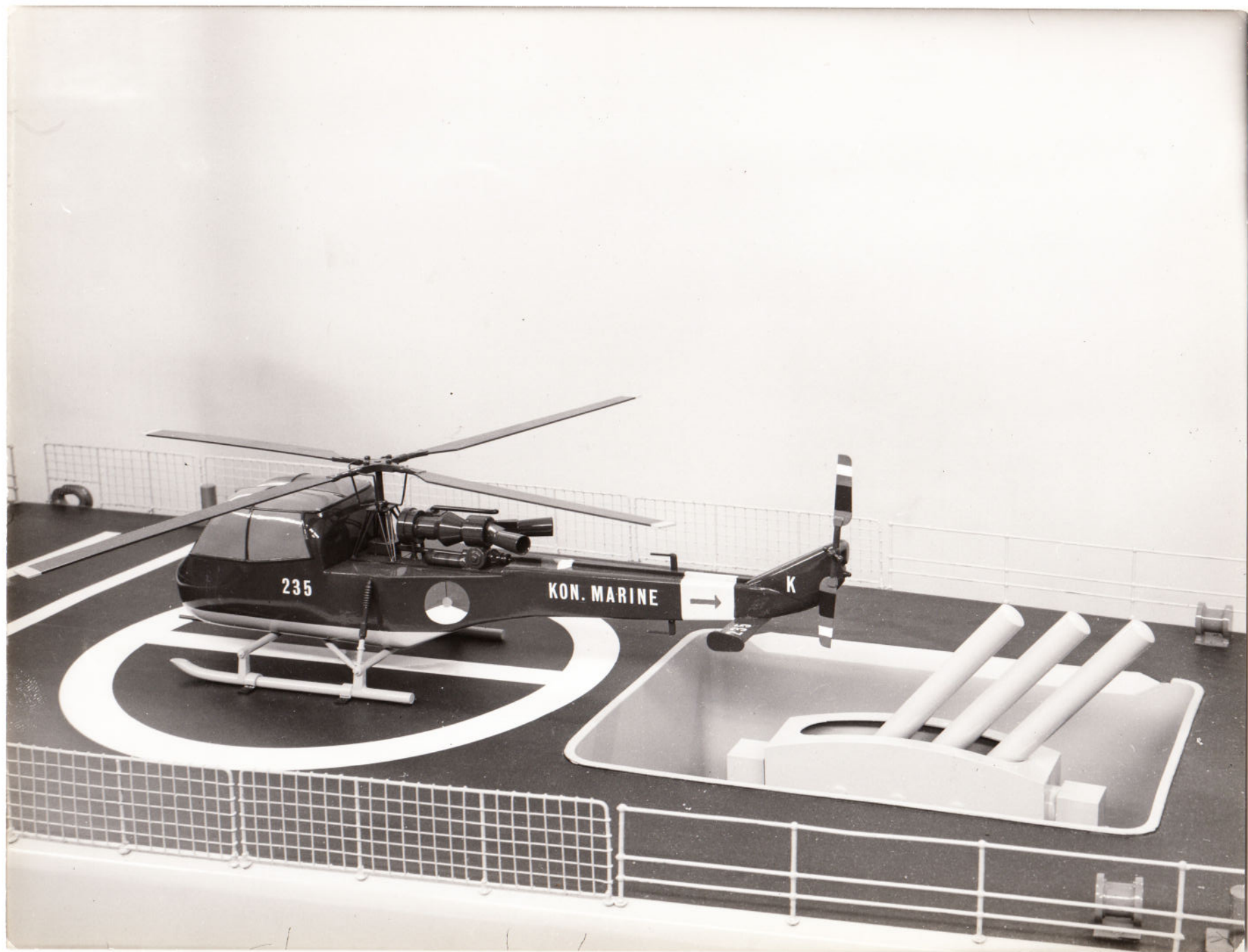


VAN SPEYK
1:25



LAD SPEYK

1:25

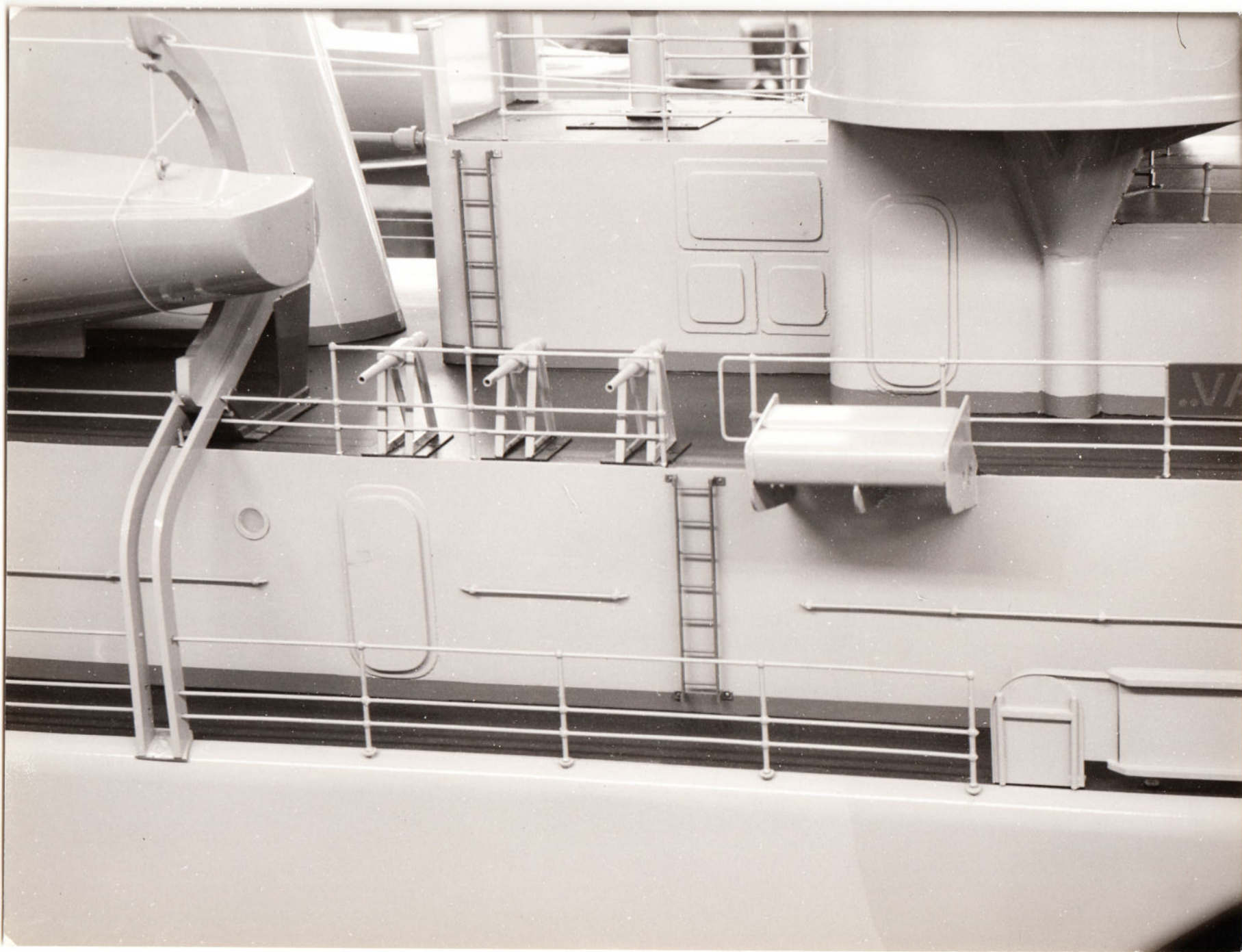


VAN SPEYK
1325
1966

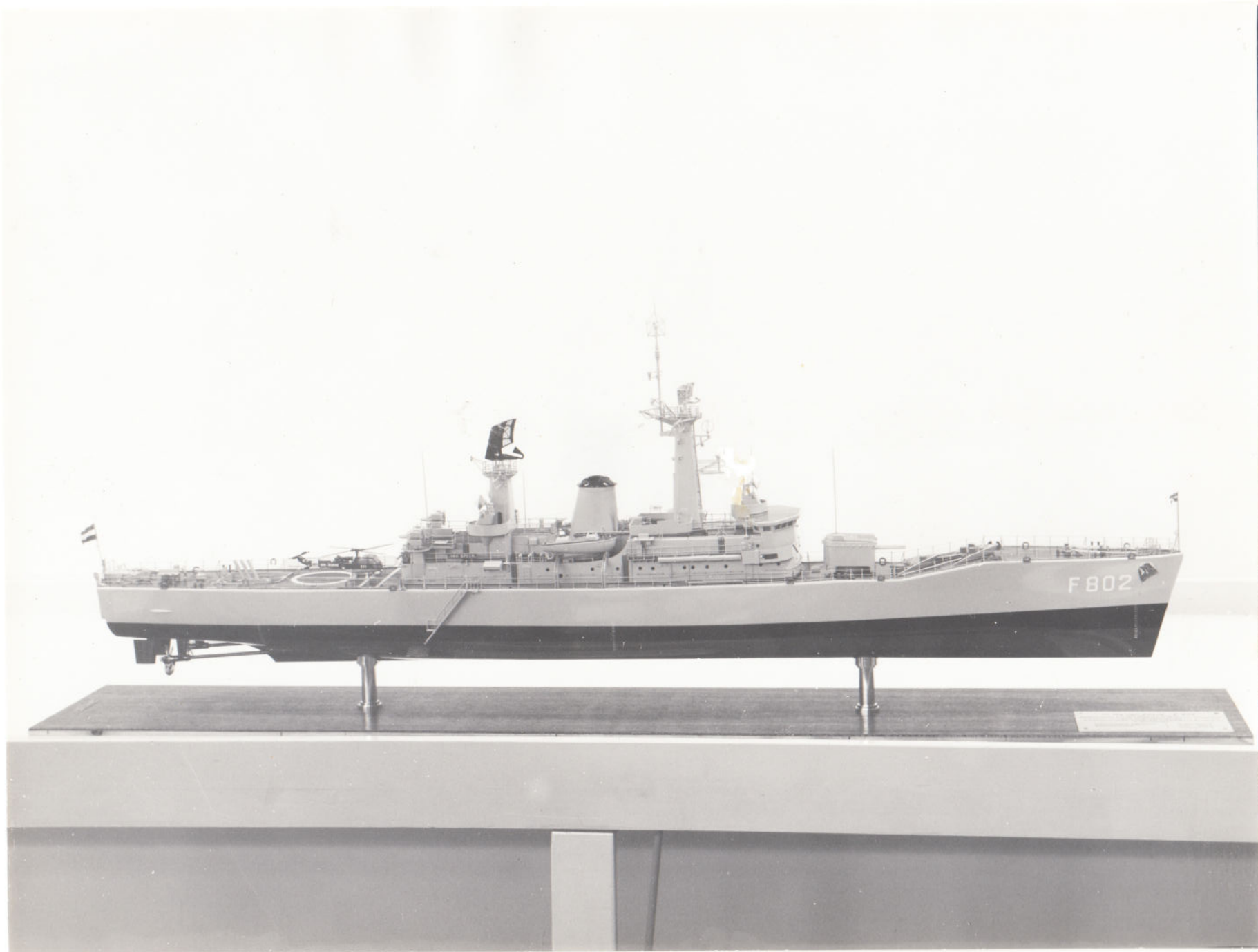


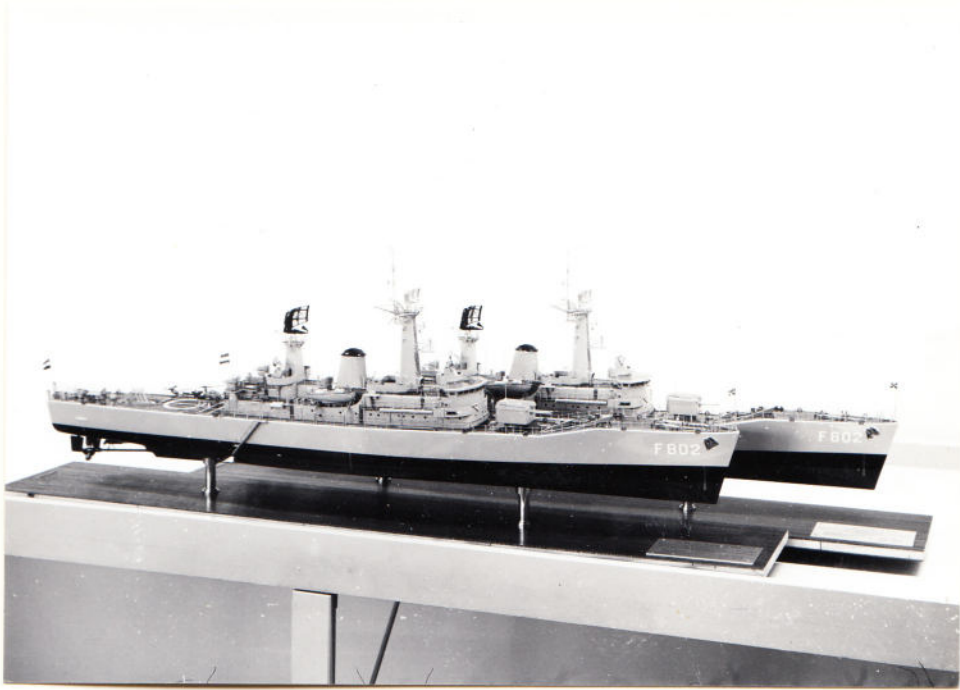


1025



VAN SPEYK 1:100 2x
1966

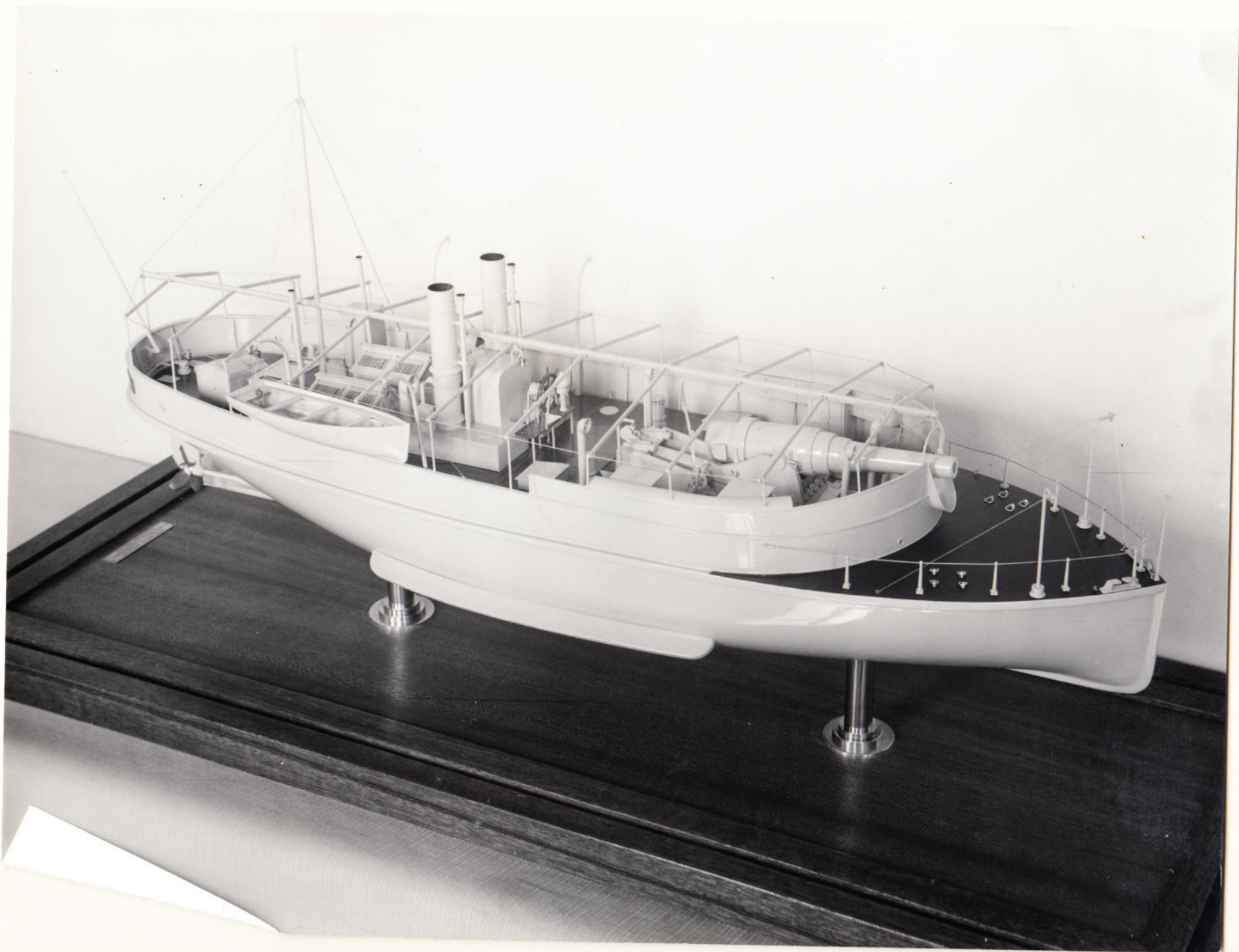


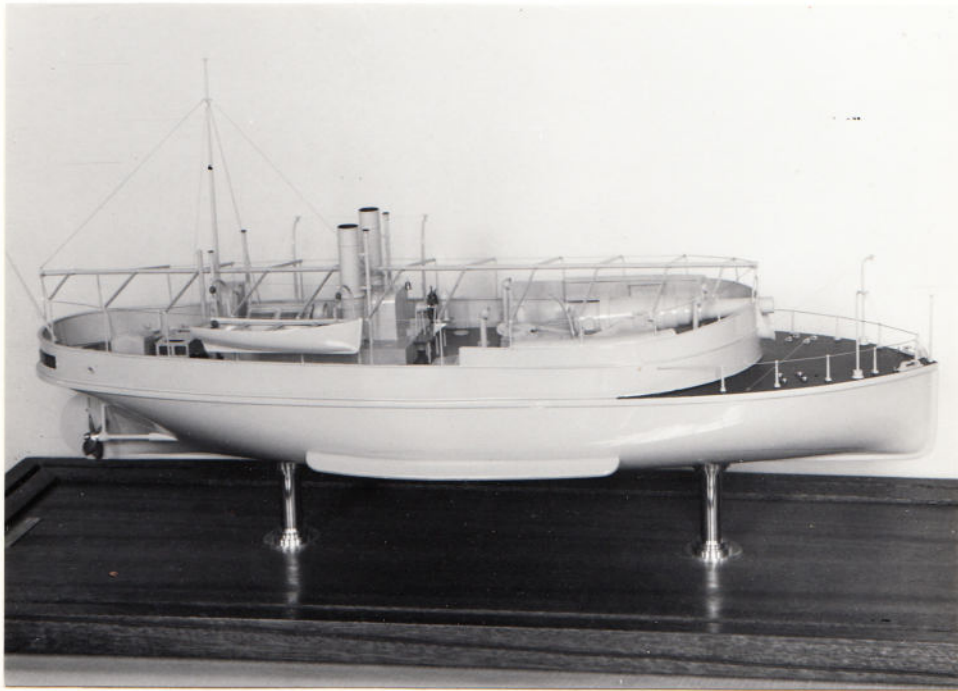
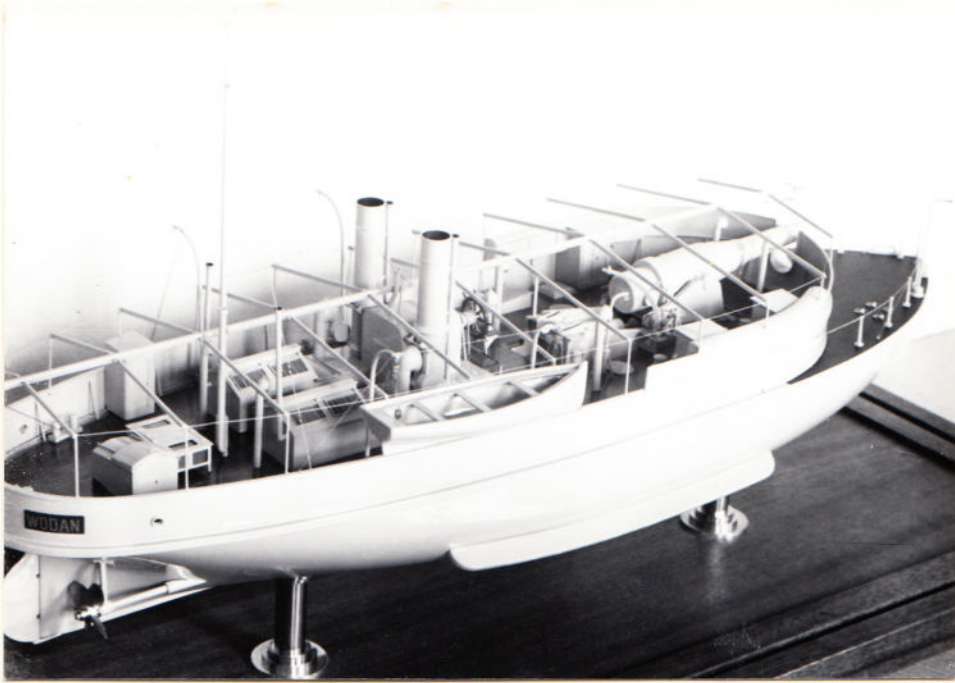


new Sperry 1966
3 leads way

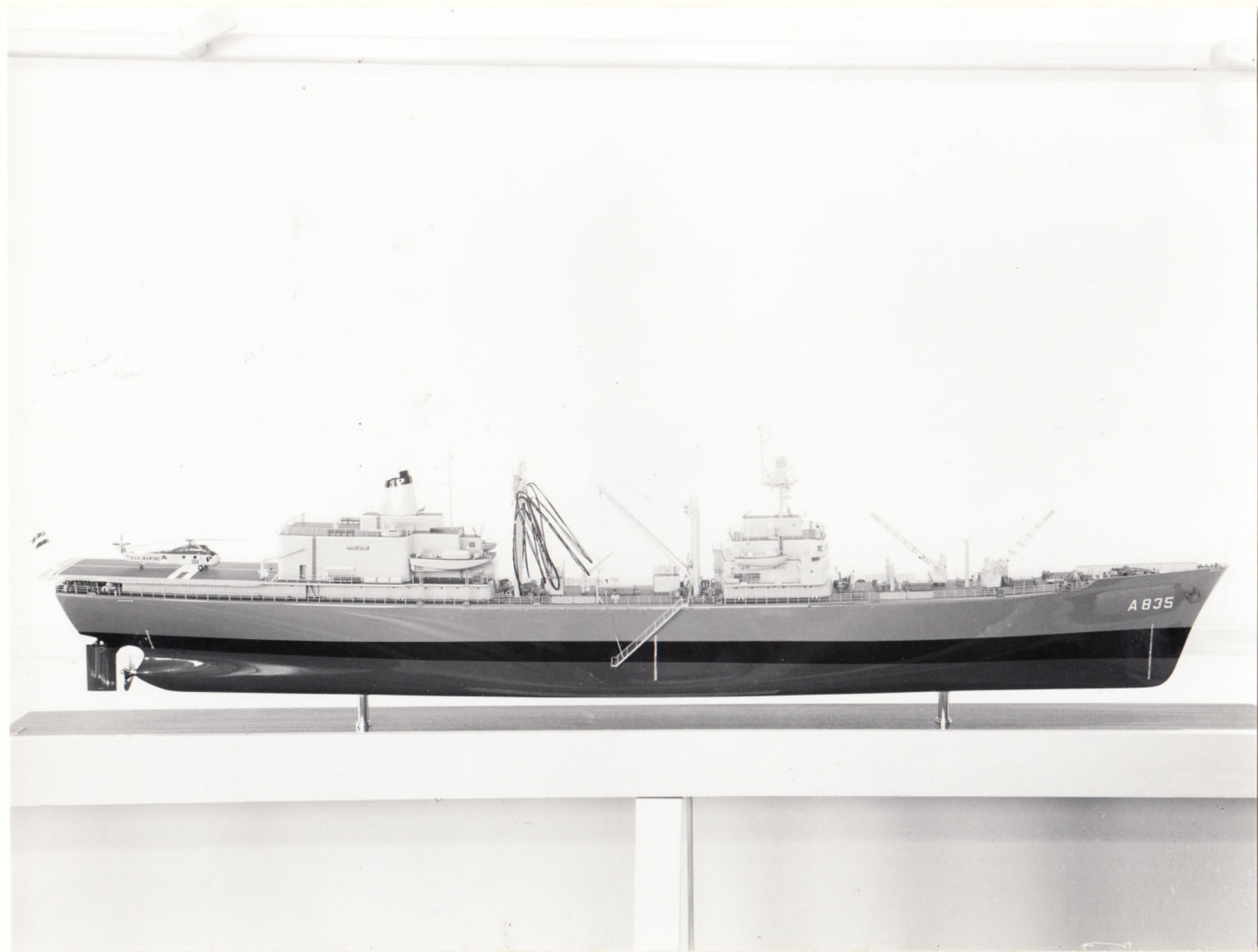


Wodan 1967





Poolster 1967 1:100







LOADS BOOT
CAPELLA
1968
1:50



PATROUILLE VAARTUIG

1:50

1973

